

READ & SAVE THESE INSTRUCTIONS
INSTALLATION & OPERATION
INSTRUCTIONS FOR: FC SL300 SERIES

CAUTION: Before connecting the fixture to power supply, be sure that the power is switched off.



Headquarters
t 800 900 1730
f 630 889 8106
3609 Swenson Ave.
St. Charles, IL 60174 USA
www.fcighting.com

1. Turn off electrical power before installing or maintaining any part of the fixture.
 2. Remove the (2) two socket head screws holding the lens and frame from fixture.
 3. Remove aluminum ballast cover, which is held in place by one slotted hex screw.
 4. Cut opening in wall 4-1/8" high and 18-3/4" wide for horizontal mounting.
- Note: Factory recommended depth is 2-7/8".
5. Insert housing in wall. Secure housing to wall using toggle style fasteners provided on both ends of fixture. Tighten ends evenly. (figure 2) It is factory recommended use a bead of silicone on back edge of housing to provide a waterproof seal between the fixture and the mounting surface, if surface is other than concrete.
 - 5A. When mounting for concrete pour, be sure to level and stabilize fixture. Cover the all holes and knockouts on fixture housing to prevent concrete from filling them. Seals the fixture against the potential for water fill during operation. **Note:** For concrete pour construction: fixture must be installed so the back edge of housing is flush with finished wall. Factory recommended depth of 2-7/8".(fig. 2)
 6. Connect conduit or code approved electrical fitting through 7/8" diameter hole on slanted rear sides of fixture. (There are two (2) 7/8" holes. One will need to be plugged through-wiring is not used.) (figure 2)
 7. After fixture is mounted, connect your ground wire to provided green ground wire on fixture.
 8. Replace aluminum ballast cover and secure to ballast tray.
 9. Install correct lamp as per label.
 10. During final assembly of lens and frame to the fixture housing, start the two (2) socket head screws and tighten evenly.
- Note: Lens frame may vary from one shown in instructions.
11. Restore power and test fixture. If fixture does not turn on, disconnect power before checking for problem.
- Note:** Fixtures are listed for installation with liquid tight connector.

GENERAL

1. Before starting the installation, disconnect the power by turning of the circuit breaker or by removing the fuse at the fuse box. Turning the power off at the light switch is not sufficient to prevent electrical shock.
 2. To ensure the success of the installation, be sure to read these instructions and review the diagrams thoroughly before beginning.
 3. All electrical connections must be in accordance with local codes, ordinances, or the national electrical code.
- Note:** The important safeguards and instructions appearing in this sheet are not meant to cover all possible conditions and situations that may occur.

Figure 1
Louver face

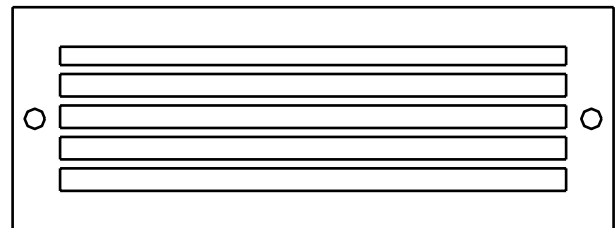
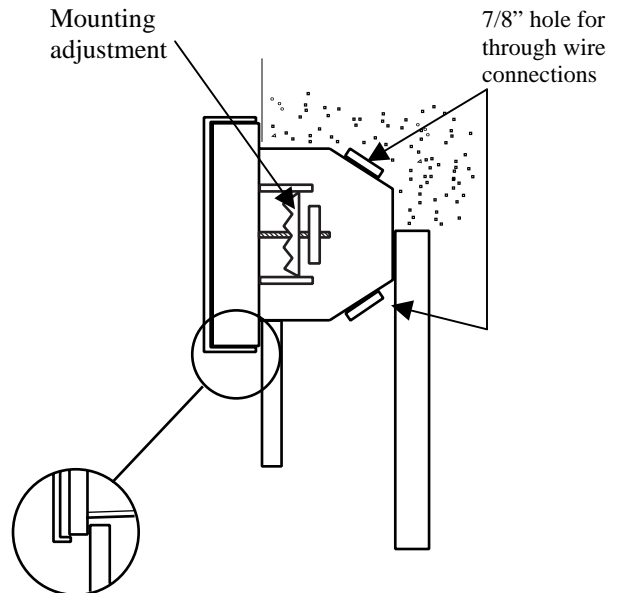


Figure 2



Confidential

This document is the proprietary property of FC Lighting, Inc. Any unauthorized transfer, use, or reproduction is strictly prohibited.

©2003-2006, FC Lighting, Inc.