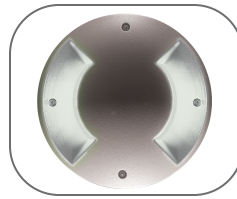




FCD Series

LED recessed
or inground



FCD472

corporate
t 800 900 1730
f 630 889 8106
3609 Swenson Ave
St. Charles, IL 60174

Catalog Number

Series	Voltage	Wattage	Finish	Accessories
FCD471	120V - 240V	LED: 1W (FCD471)	BK Black	CO Collar option
FCD472		LED: 2W (FCD472)	BZ Bronze	EC E-Coat (use for coastal / severe weather areas)
FCD474		LED: 4W (FCD474)	CC Custom Color	F Fuse
			SL Silver	
			WH White	

Product Information

Listing: UL & cUL listed for interior and exterior wet locations.

Construction: Marine grade, corrosion resistant, heavy walled, high pressure die cast aluminum construction.

Gasket: Neoprene continuous closed cell urethane 'O' ring gasket to seal out contaminants.

Fasteners: Captive and recessed stainless steel, tamper resistant hex socket screws.

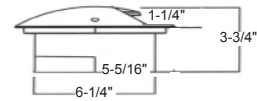
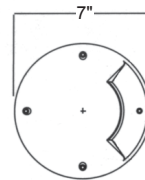
Diffuser: Lens is clear, tempered glass.

LED: Integral inverter and driver potted with a variable input of voltage from 120V to 240V. Consult factory for color changing or multi-color combinations and other voltage options.

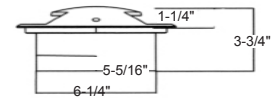
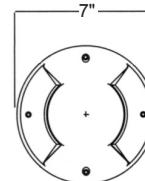
Finish: Five stage preparation process that includes chromate conversion and TGIC super polyester powder-coat as standard. Optional E-coat process added to standard finish including zinc phosphate. E-coat comes with a 5 year warranty.

Mounting: Concrete pour with CO accessory.

FCD471



FCD472



FCD474

