



FCSL Series

Exterior die cast large step light with 316 stainless steel faceplate for masonry applications



Step light

corporate
t 800 900 1730
f 630 889 8106
3609 Swenson Ave
St. Charles, IL 60174

Catalog Number

Series	Voltage	Wattage	Ballast	LED diode	Finish	Accessories	
FCSL308 Open face	120V	2/26Q< 120V only	2-39MH△	E Electronic	WH White	CC Custom color	DWR Dry wall wings for remodeling applications
FCSL309 Quartered face	277V	27BX< 2/40W T10		M Magnetic		SS Stainless steel	EC E-coat
FCSL310 Louver face		36BX< 2/50WQ T4 ▷39BX<	1/2-35HPS△ 1/2-50HPS△		Consult factory for amber, blue, green or red		EMR Emergency back-up, remote
		120V only magnetic					F Fuse
		2/9BX					LRI Long range igniter
		2/13BX					MLF Microlouver film
		LED <i>New!</i>					P Prismatic lens, C73
		8-1 watt diodes (total 8 watts)					PCL Polycarbonate lens (PL only)
		8-3watt diodes (total 24 watts)					RSDT Step down transformer remote (use with INC 277V)
		Note: SLH or SLV optional lens are recommended					SLH Horizontal spread lens
							SLV Vertical spread lens

▷Recommended lamping

<Electronic only

▽Remote ballast only (may require long range igniter)

Product Information

Listing: U.L. listed for interior and exterior wet locations.

Housing: Marine grade corrosion resistant heavy walled high pressure die-cast aluminum construction, with 316 stainless steel faceplate. Two 7/8" KO for through wiring.

Faceplate: Heavy duty brushed marine grade 316 stainless steel.

Gasket: Neoprene continuous closed cell 'O' ring gasket to seal out contaminants.

Fasteners: Captive stainless steel, tamper resistant, hex socket screws.

Diffuser: Lens is 1/8" thick, tempered opal glass, heat resistant, standard.

Reflector: Precision formed, specular clear for maximum reflectance.

Socket: PL: Two pin (magnetic) or four pin (electronic) plug-in type compact fluorescent lamp holder (lamp by others).

INC (120V only): Mini-can base for incandescent quartz, or medium base, porcelain. **HID:** Medium base, 4KV pulse rated porcelain socket. Nickel-plated shell, spring loaded contact and double silicone jacket with 200°C rated leads.

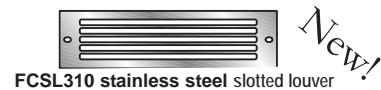
LED: 1 watt or 3 watt LumiLed Luxeon warm white diodes with a precision 18° beam angle lens, projected through the lens to maximize the light output and performance. Integral inverter and driver potted with a variable input of voltage from 120V to 277V. Consult factory for color changing or multi-color combinations.

Ballast: PL: Fluorescent normal power factor core and coil, U.L. listed ballast standard. **HID:** Dual voltage (120/277) core and coil, high power factor, thermally protected ballast standard, remote.

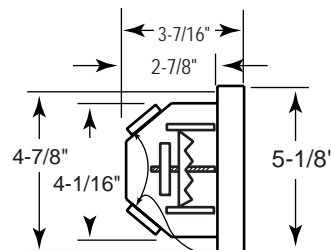
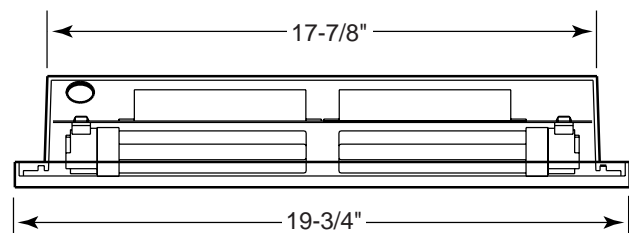
Finish: Five stage preparation process that includes chromate conversion and TGIC super polyester powder-coat is standard. Optional E-coat process added to standard finish including zinc phosphate.

Mounting: Concrete pour. Consult factory on accessories for drywall application.

FCSL308 stainless steel open face FCSL309 stainless steel quartered face



FCSL310 stainless steel slotted louver



7/8" knockouts, 2 places

