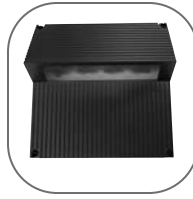




FCSL Series

Exterior die cast step light with die cast faceplate



Step light

corporate
t 800 900 1730
f 630 889 8106
3609 Swenson Ave
St. Charles, IL 60174

Catalog Number

Series	Voltage	Wattage	Finish	Accessories
FCSL626	120V - 240V	LED - 4 watt	BK Black WH White CC Custom Color BZ Bronze SL Silver	EC E-coat (use for coastal/ severe weather areas) F Fuse

Product Information

Listing: U.L. listed for interior and exterior wet locations.

Housing & Faceplate: Marine grade corrosion resistant heavy walled high pressure die-cast aluminum construction, with (2) 7/8" knockouts in rear of fixture.

Gasket: Neoprene continuous closed cell 'O' ring gasket to seal out contaminants.

Fasteners: Captive and recessed, stainless steel, tamper resistant, hex socket screws.

Diffuser: Spread Lens is 1/8" thick, tempered, clear, glass, heat resistant.

LED: 4 watt white diodes with a precision 18° beam angle lens and tilted at a 30° angle to project through the die cast louver to maximize the light output and performance. Integral inverter and driver potted with a variable input of voltage from 120V to 240V. Consult factory for color changing or multi-color combinations and other voltage options

Finish: Five stage preparation process that includes chromate conversion and TGIC super polyester powder-coat is standard. Optional E-coat process added to standard finish including zinc phosphate. E-coat comes with a 5 year warranty.

Mounting: Concrete pour with supplied PVC sleeve. Consult factory on accessories for drywall application.

