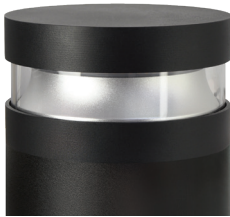


## FCB6C-36L02



**Date:**

**Type:**

**Luminaire:**

**Project:**

**Approved:**

**FCB6C-36L02** Exterior die-cast aluminum, 6" nominal diameter bollard with a 360° window and 2" high lens.

### SPECIFICATIONS

#### PHYSICAL

<b>dimensions</b>	39.5"H x 5.50"Ø
<b>weight</b>	18 lbs
<b>housing</b>	Marine grade, corrosion resistant, heavy gauge extruded aluminum
<b>lens</b>	Clear, heat resistant, tempered glass
<b>mounting</b>	Heavy wall base bracketing for bollard installation provides a unique mounting solution, so the tower body anchors flush to the ground without the appearance of a base plate, anchor bolts included
<b>ingress protection</b>	IP66: dry, damp, or wet locations
<b>finish</b>	Available in Black, Bronze, Graphite Grey, Silver, White and Custom Colors. Six stage chemical iron phosphate conversion pre-treatment. Polyester powder coat finish, 18 µm minimum, 5,000 hour salt spray test (ASTM B117) compliant with Florida / AAMA 2604 specification.

#### PERFORMANCE

<b>color temperature</b>	2700K, 3000K, 3500K, 4000K
<b>lumen output</b>	943 lm, 992 lm, 1045 lm, 1100 lm
<b>lumen maintenance</b>	L70 > 70,000 hours
<b>color consistency</b>	3 SDCM, 85 CRI
<b>operating temperature</b>	-13°F to 104°F (-25°C to 40°C)
<b>warranty</b>	5-Year limited warranty

#### ELECTRICAL

<b>input voltage</b>	Universal 120 - 277 VAC, optional: 347 VAC, 480 VAC
<b>power supply</b>	Integral Class II, electronic, high power factor > 94% @ 120V
<b>certification</b>	ETL/cETL Listed
<b>standards</b>	UL1598 / CSA C22.2 No. 250.0; UI 8750 / CSA C22.2 No. 250.13 / IES LM-79 / LM-80
<b>power consumption</b>	20W @ 120 - 277 VAC (maximum)
<b>dimming</b>	0-10V (10%)

Due to continuous development and improvements, specifications are subject to change without notice.  
Product use certifies agreement to FC Lighting terms and conditions.



# Ordering Information

## ORDERING INFORMATION

FCB6C-36L02		39		11L			
SERIES	VOLTAGE	HEIGHT	CCT	LUMENS	FINISH	OPTIONS	
FCB6C-36L02	UNV	UNV 120 - 277 VAC	39 39.5"	27K 2700K	11L 1100 lm (20W)	BKE Black	LD 0-10V Dimming (Standard)
	347V	347 VAC		3K 3000K		BRE Bronze	SP20 20kV Surge Protector
	480V	480 VAC		35K 3500K		GRE Graphite Grey	BBU Battery Backup (Integral)
	120V	120 VAC (Photo Eye)		4K 4000K		SLE Silver	SP20-BBU (2) 20kV Surge Protectors (1/LED Driver, 1/BBU) and Battery Backup (Integral)
	277V	277 VAC (Photo Eye)				WHE White	
						CCE Custom Color	PE120 Photo Eye for 120 VAC
							PE277 Photo Eye for 277 VAC
							LAB <sup>1</sup> Less Anchor Bolt Kit - for shipment separate of Anchor Bolt Kit
							TR Tamper Resistant Hardware

## ANCHOR BOLT KITS

### A00636

Anchor Bolt Kit - Complete Anchor Bolt Kit shipped in advance of luminaire.

<sup>1</sup> Note: Luminaire must be mounted into FC Lighting supplied Anchor Bolt Kit shipped with or separate of luminaire.

## Consult Factory for other options and configurations.

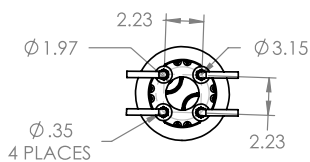
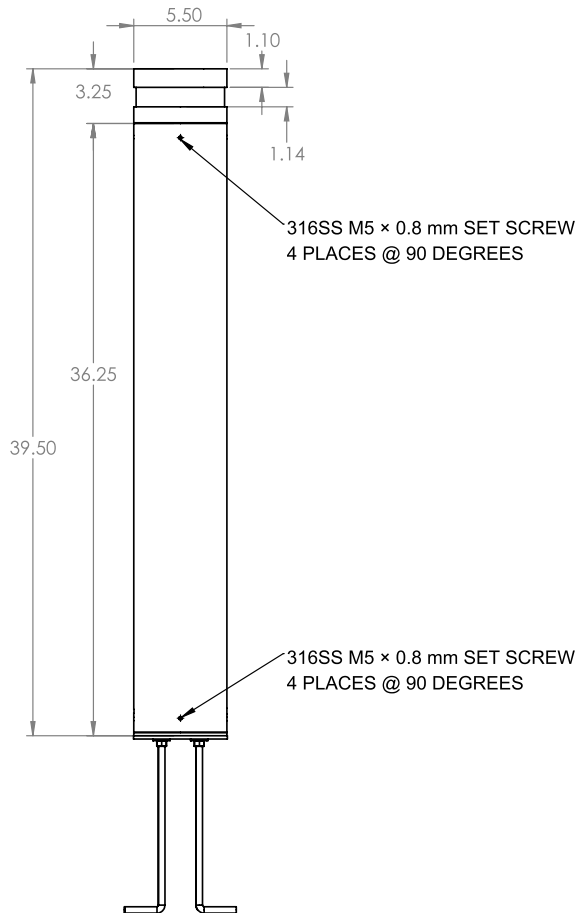
To ensure you receive proper configurations for your lighting specifications, contact us directly about any unique application requirements. This may include but not be limited to lumen output, mounting needs, or electrical requirements.

Due to continuous development and improvements, specifications are subject to change without notice.  
Product use certifies agreement to FC Lighting terms and conditions.

## Physical



## PRODUCT DIMENSIONS - STANDARD PRODUCT



## MOUNTING

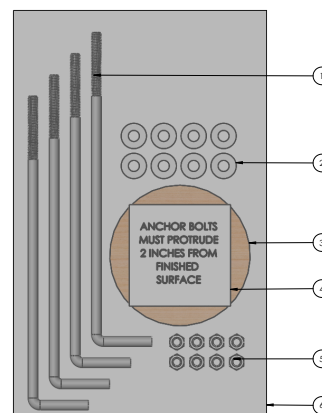
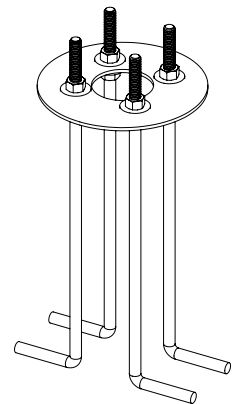
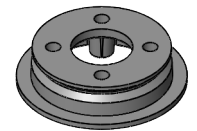
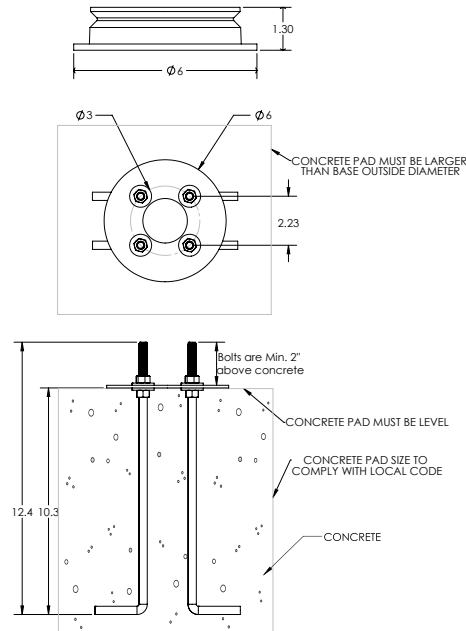
## Mounting Plate Diameter

Ø 6"

## Anchor Bolt Template Assembly

A00636

(Includes the below items listed)



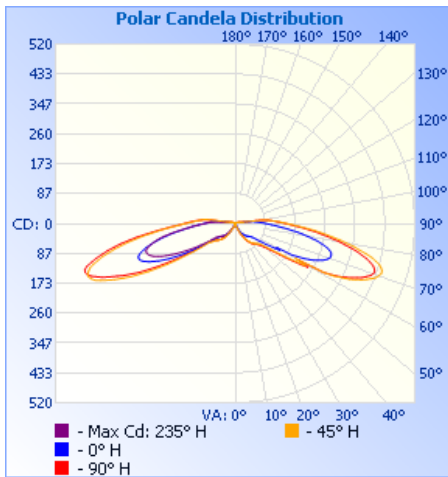
#	ANCHOR BOLT TEMPLATE ASSEMBLY (A00636) (Includes below items)	QTY.
1	3/8" x 12" x 2" L hook Anchor Bolt (X91603A 120)	4
2	3/8" FLAT WASHER H-D GALV STEEL	8
3	ANCHOR BOLT WOOD TEMPLATE	1
4	ANCHOR BOLT LABEL	1
5	3/8"-16 HEX NUT H-D GALV STEEL	8
6	PLASTIC BAG, SEALED	1

Due to continuous development and improvements, specifications are subject to change without notice.  
Product use certifies agreement to FC Lighting terms and conditions.



# Photometry

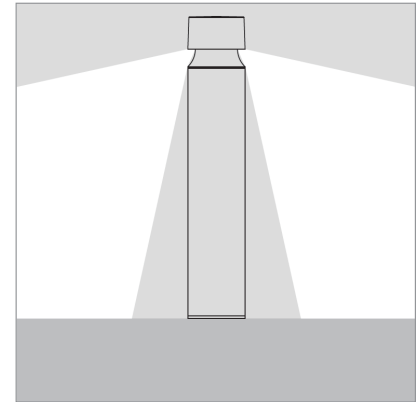
## OPTICAL DISTRIBUTION



**Illuminance at a Distance**

	Center Beam fc	Beam Width
0.17ft	20.5 fc	0.10 ft 0.12 ft
0.33ft	5.44 fc	0.20 ft 0.24 ft
0.50ft	2.37 fc	0.30 ft 0.36 ft
0.67ft	1.32 fc	0.40 ft 0.49 ft
0.83ft	0.86 fc	0.50 ft 0.60 ft
1.00ft	0.59 fc	0.60 ft 0.73 ft

■ Vert. Spread: 33.4°  
■ Horiz. Spread: 39.9°



Due to continuous development and improvements, specifications are subject to change without notice.  
Product use certifies agreement to FC Lighting terms and conditions.