

FCBT690S



Date:

Type:

Luminaire:

Project:

Approved:

FCBT690S Exterior die-cast aluminum bollard with right angle head position tower. Available in 18" or 24" height. This bollard is a lower profile version in the FCBT690 family. Designed and built to illuminate the ground and/or pathways safely without glare. FCBT690S has a wide-throw beam pattern covering 22'-26' wide and still measuring greater than 1 foot candle. It also has a forward throw of approximately 12 feet.

SPECIFICATIONS

PHYSICAL

dimensions	18"H or 24"H x 5"W x 6.5"D at top (2"D at base)
weight	8 lbs
housing	Marine grade, corrosion resistant, heavy gauge aluminum
lens	Impact resistant, UV stabilized, clear, polycarbonate diffuser
mounting	Heavy wall base bracketing for bollard installation provides a unique mounting solution, so the tower body anchors flush to the ground without the appearance of a base plate, anchor bolts included
ingress protection	IP66: dry, damp, or wet locations
finish	Available in Black, Bronze, Graphite Grey, Silver, White and Custom Colors. Six stage chemical iron phosphate conversion pre-treatment. Polyester powder coat finish, 18 µm minimum, 5,000 hour salt spray test (ASTM B117) compliant with Florida / AAMA 2604 specification.

PERFORMANCE

color temperature	2700K, 3000K, 3500K, 4000K
lumen output	844 lm
lumen maintenance	L70 > 70,000 hours
color consistency	3 SDCM / 85CRI
operating temperature	-13°F to 104°F (-25°C to 40°C)
warranty	5-Year limited warranty

ELECTRICAL

input voltage	Universal 120 - 277 VAC, optional: 347 VAC
power supply	Integral Class II, electronic, high power factor > 94% @ 120V
certification	ETL/cETL Listed
standards	UL1598 / CSA C22.2 No. 250.0; UI 8750 / CSA C22.2 No. 250.13 / IES LM-79 / LM-80
power consumption	15W @ 120 - 277 VAC
dimming	standard: 0-10V (10%) optional: ELV (120 VAC Only) / DMX (UNV Only) / DALI (UNV Only)

Due to continuous development and improvements, specifications are subject to change without notice.
Product use certifies agreement to FC Lighting terms and conditions.



Ordering Information

ORDERING INFORMATION

FCBT690S									
SERIES	VOLTAGE		HEIGHT		COLOR		LUMENS (NOMINAL)		OPTIONS
FCBT690S	UNV	120 - 277 VAC	18	18"	827	(85CRI) 2700K	08L	844 lm (15W)	LD 0-10V Dimming (Standard)
	347V	347 VAC	24	24"	830	(85CRI) 3000K			ELV ELV Dimming (120V Only)
	120V	120 VAC (ELV Only)			835	(85CRI) 3500K	HS ¹ - 180° House Shield		DMX DMX Dimming (UNV Only)
					840	(85CRI) 4000K	06L	644 lm (15W)	DALI DALI Dimming (UNV Only)
							HS ² - 270° House Shield		SP20 20kV Surge Protector
							04L	353 lm (15W)	BBU Battery Backup (UNV Only)
									SP20-BBU (2) 20kV Surge Protectors (1/LED Driver, 1/BBU) and Battery Backup (Integral)
									HS ¹ 180° House Shield
									HS ² 270° House Shield
									LAB ³ Less Anchor Bolt Kit - for shipment separate of Anchor Bolt Kit

Lumens specified at 840

ANCHOR BOLT KITS

A00690S

Anchor Bolt Kit - Complete Anchor Bolt Kit shipped in advance of luminaire.

¹ **Note:** 06L only available with HS option.

² **Note:** 04L only available with HS2 option.

³ **Note:** Luminaire must be mounted into FC Lighting supplied Anchor Bolt Kit shipped with or separate of luminaire.

Consult Factory for other options and configurations.

To ensure you receive proper configurations for your lighting specifications, contact us directly about any unique application requirements. This may include but not be limited to lumen output, mounting needs, or electrical requirements.

Due to continuous development and improvements, specifications are subject to change without notice.
Product use certifies agreement to FC Lighting terms and conditions.

 US Commercial Lighting Manufacturer Since 1982

© FC Lighting

3609 Swenson Ave. • St. Charles, IL • 60174 | fcighting.com | 800.900.1730

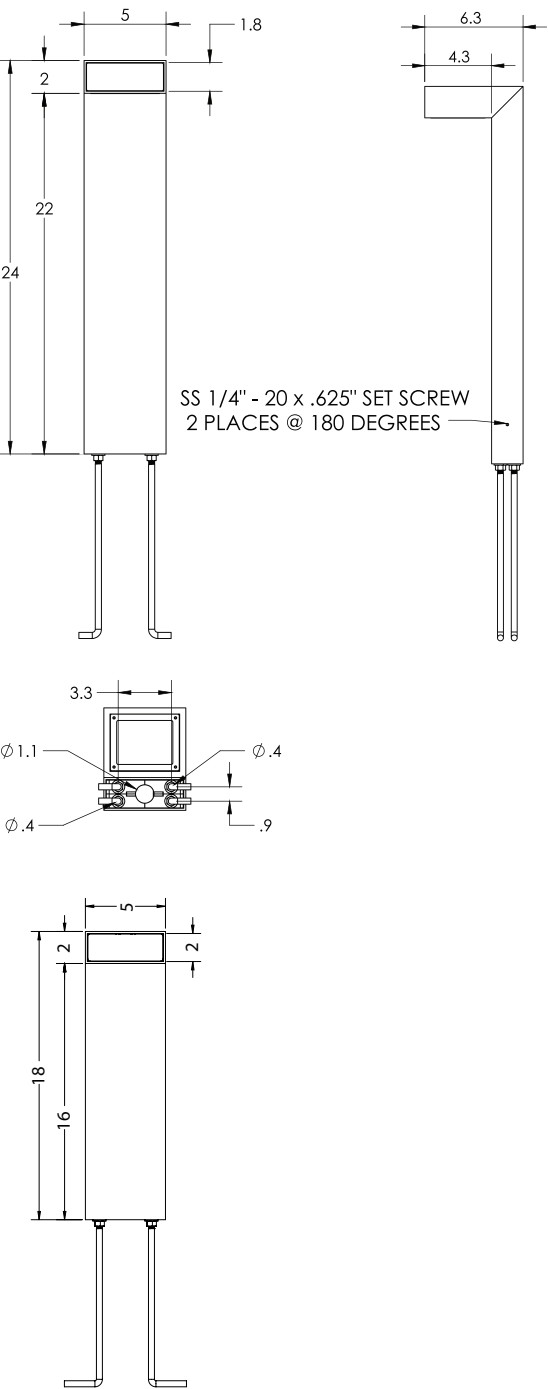
Specification Sheet

RG-DM-072225



Physical

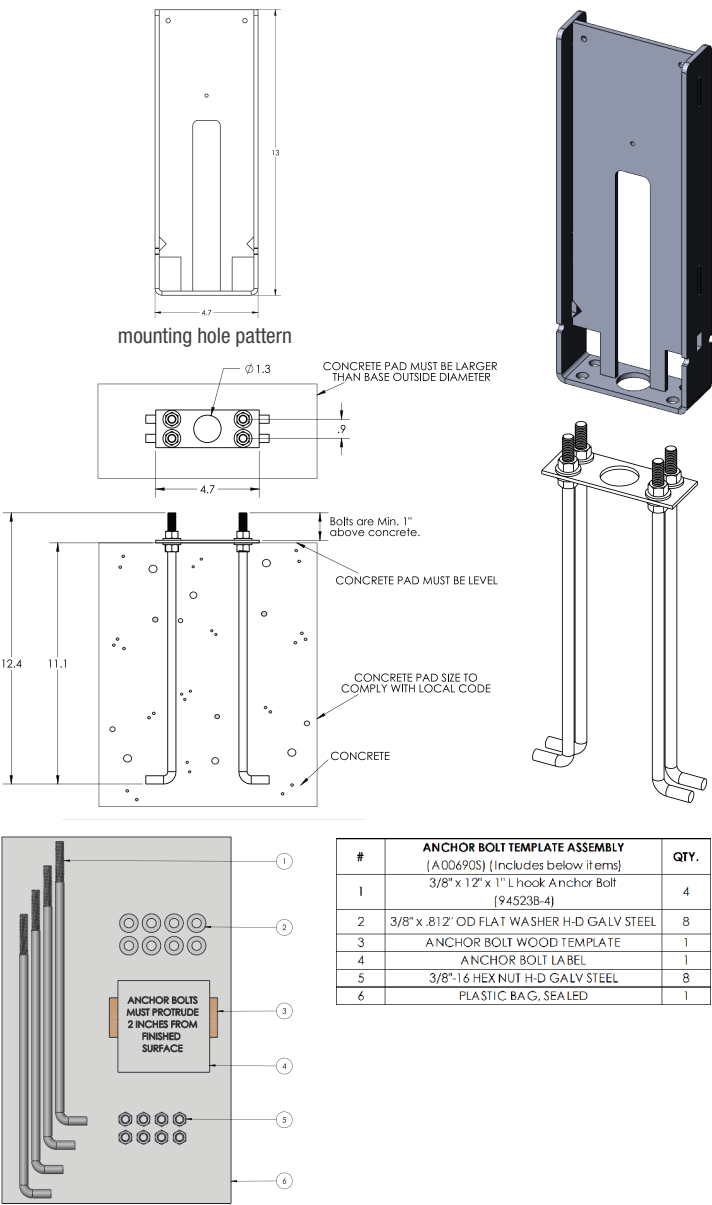
PRODUCT DIMENSIONS - STANDARD PRODUCT



MOUNTING

Mounting Plate Size	4.7" x 3"
Anchor Bolt Template Assembly	A00690S

(Includes the below items listed)



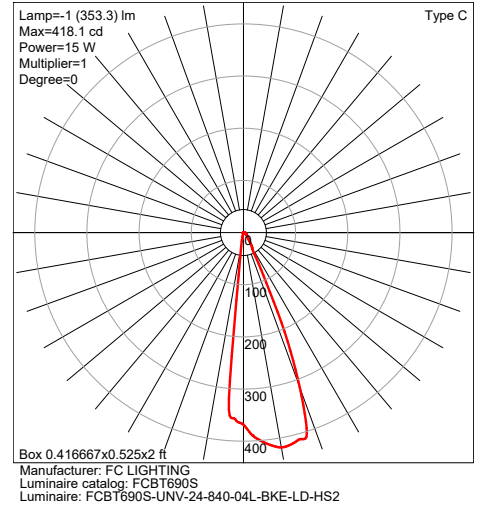
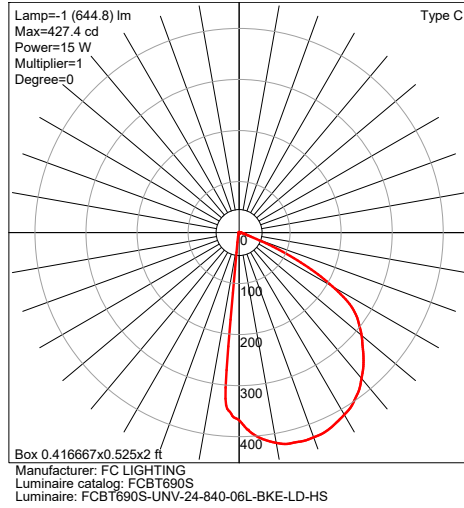
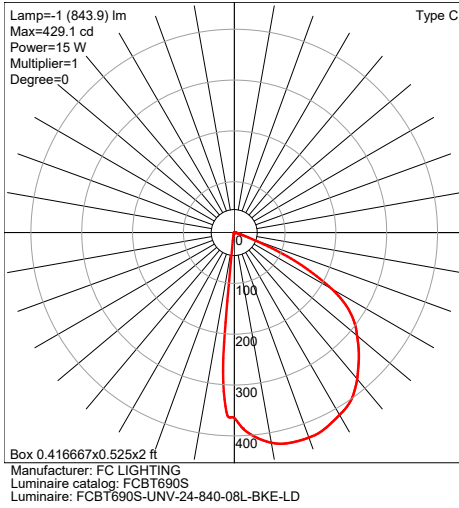
#	ANCHOR BOLT TEMPLATE ASSEMBLY (A00690S) (Includes below items)	QTY.
1	3/8" x 12" x 1" L Hook Anchor Bolt (94523B-4)	4
2	3/8" x .812" OD FLAT WASHER H-D GALV STEEL	8
3	ANCHOR BOLT WOOD TEMPLATE	1
4	ANCHOR BOLT LABEL	1
5	3/8"-16 HEX NUT H-D GALV STEEL	8
6	PLASTIC BAG, SEALED	1

Due to continuous development and improvements, specifications are subject to change without notice.
Product use certifies agreement to FC Lighting terms and conditions.

Photometry



OPTICAL DISTRIBUTION



COLOR	IES MULTIPLIER
827	0.93
830	0.95
835	0.99
840	1.00

Due to continuous development and improvements, specifications are subject to change without notice.
Product use certifies agreement to FC Lighting terms and conditions.

 US Commercial Lighting Manufacturer Since 1982

Specification Sheet

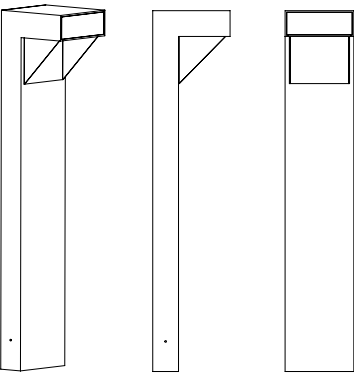


Accessories

OPTIONS

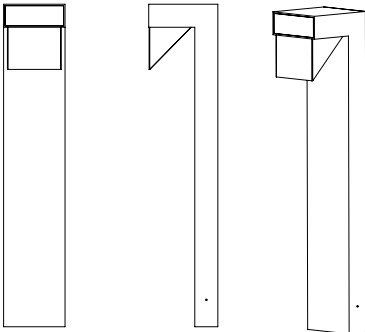
FIND IES FILES ON FCLIGHTING.COM

HS - House Shield that blocks light out the sides



Use the 180° House Side Shield (HS) to protect beach side areas where luminaires are installed.

HS2 - House Shield that blocks light out the front

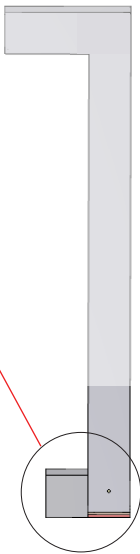


Use the (HS2) front House Shield to protect beach side areas where luminaires are installed.

CD - Cane Detector

foot depth	add 3" D at column base
foot width	5" W

SHOWS FCBT690
W/ CANE DETECTION



Due to continuous development and improvements, specifications are subject to change without notice.
Product use certifies agreement to FC Lighting terms and conditions.

 US Commercial Lighting Manufacturer Since 1982

Specification Sheet