

Date:	
Type:	
Luminaire:	
Project:	

Approved:

FCC4300R Nine-Inch Round Cylinder – Wall or Pendant Mount Down Lighting

Remote Driver and Battery Backup



FEATURES

- Up to 3000 lumens (4000K)
- Remote Driver with Battery Backup options
- Clear anti-glare tempered glass lens (IK09)
- Multiple housing colors
- 0-10V 1% Dimming
- 93 CRI with 2 SDCM

PERFORMANCE

Beam Spread: 15°, 40°, 50°, 72°
CCT Options: 2700K, 3000K, 3500K, 4000K
CRI: 93 CRI
Consistency: 2 SDCM (Luminaire to Luminaire)
Lumens: 1000 - 3000 lumens
Lumen Maintenance: L70 > 70,000 hours

PHYSICAL

Mounting: Mounts directly to standard recessed junction box with wall mount or twist-lock canopy. Additional holes allow unit to be attached directly to mounting surface.

Housing: Heavy-walled, marine grade, corrosion resistant die-cast aluminum housing with wall mount or twist-lock canopy. Silicone 'O' ring gasket to seal out contaminants. Captive and recessed stainless steel, tamper resistant hex socket screws.

Finish: Available in Black, Bronze, Graphite Grey, Silver, White and Custom Colors. Six stage chemical iron phosphate conversion pre-treatment. Polyester powder coat finish, 18 µm minimum, 5,000 hour salt spray test (ASTM B117) compliant with Florida / AAMA 2604 specification.

Warranty: 5-Year limited warranty

Lens: IK09 impact compliant, 1/8" thick clear, tempered glass

Ingress Protection: Continuous silicone gasket to seal out contaminants, IP65 rated for dry, damp or wet locations.

Weight: 8-13 lbs (Depending on Length)

ELECTRICAL

Voltage: Universal 120 - 277 VAC standard, 347 VAC optional

Power Supply: Integral Class II, electronic high-power factor >.90, THD < 20%, FCC Title 47 Part 15 Class A

Power Consumption: Maximum 36W

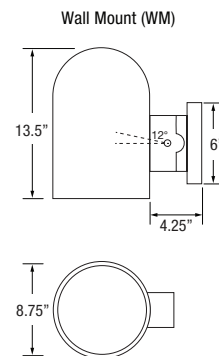
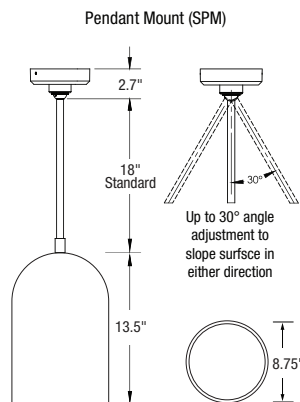
Dimming: 0-10V 1% Dimming

Standards:

- cETLus Listed, CE, NOM, and RoHS Compliant.
- Wet location listed for wall or ceiling mount IP65 Ingress protection.
- 1.5G (ANSI C136.31) Vibration resistance rated.
- IK09 (IEC6226) Impact resistance rated.
- IESNA LM79 Photometric testing by NVLAP accredited test lab.
- IESNA LM80 LED testing by NVLAP accredited test lab.
- IESNA TM21 Luminaire lumen depreciation projection to > 70,000 hours.

PHYSICAL DIMENSIONS

Luminaire	Height (H)
FCC4300R	13.5" Height
FCC4300RP	13.5" Height



FCC4300R Nine-Inch Round Cylinder – Wall or Pendant Mount Down Lighting

PRODUCT CODE

EXAMPLE: FCC4300R-SPM-18-UNV-927-10L-BKE-15-LD

MODEL	MOUNTING	SUSP LENGTH	VOLTAGE	COLOR	LUMENS	FINISH	OPTIC	DIMMING	OPTIONS	BATTERY/REMOTE DRIVER
FCC4300R										

MODEL

FCC4300R

LED DRIVER REMOTE (INDOOR)
IP20, IK08, NEMA 1, -20°C to +50°C,
30' MAX Distance with 12AWG.
*Consult factory for outdoor remote
driver only.

MOUNTING

SPM Slope Pendant
WM Wall

SPM LENGTH

Specify the optional suspension length in inches.
(Top of luminaire to ceiling) (SPM 18" Standard,
6"-120" Max; 61"-120" w/LD & ET Only and stem
comes in 2 sections) *Consult factory & price
guide for other lengths.

VOLTAGE

UNV Universal 120 - 277 VAC
347V 347 VAC

COLOR

927 (93CRI) 2700K
930 (93CRI) 3000K
935 (93CRI) 3500K
940 (93CRI) 4000K

LUMENS typical

10L 1000 lm @ 12 W
20L 2000 lm @ 24W
30L 3000 lm @ 36W

FINISH

BKE Black
BRE Bronze
GRE Graphite Grey
SLE Silver
WHE White
CCE Custom Color

OPTIC nominal

15 Spot (15°)
40 Narrow Flood (40°)
50 Flood (50°)
72 Wide Flood (72°)

DIMMING

LD 0-10V Dimming, 1% (Remote)

OPTIONS

N/A (Leave Blank)

BATTERY/REMOTE DRIVER

BBUR BATTERY BACK-UP & LED DRIVER REMOTE
(INDOOR), IP20, IK08, NEMA 1, 0°C to +48°C, 30'
MAX Distance with 12AWG (w/UNV Option Only)
500 Lumens Nominal in EM Mode

BBUX BATTERY BACK-UP & LED DRIVER REMOTE
(OUTDOOR), IP67, IK10, NEMA 4X, -20°C to
+55°C, 30' MAX Distance with 12AWG (w/UNV
Option Only) 600 Lumens Nominal in EM Mode

DRR LED Driver Only Remote (INDOOR) 30' MAX
Distance with 12AWG (w/UNV Option Only)

DRX LED Driver Only Remote (OUTDOOR) 30' MAX
Distance with 12AWG (w/UNV Option Only)

FCC4300R Nine-Inch Round Cylinder – Wall or Pendant Mount Down Lighting

LUMENS / WATTAGE typical

Model	Watts	940
FCC4300R	12 W	1000 lm
	24 W	2000 lm
	36 W	3000 lm

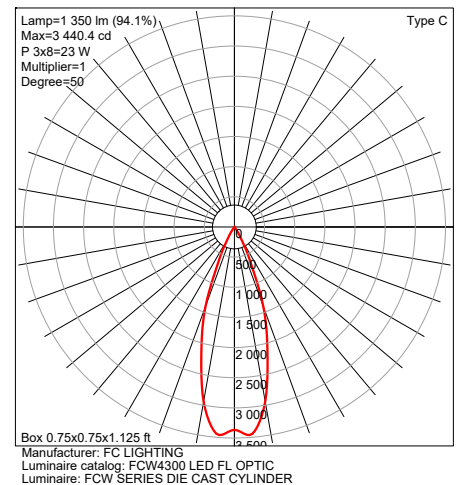
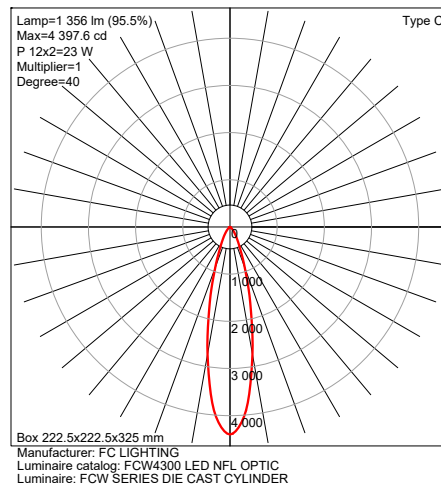
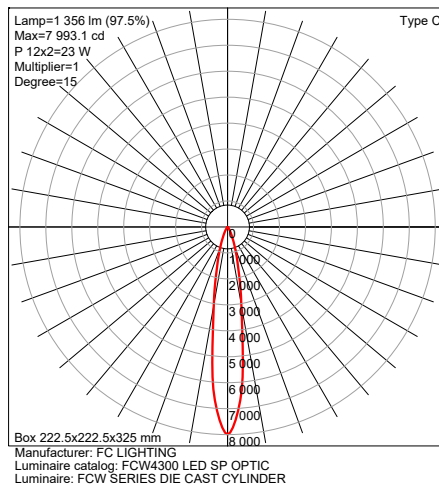
IES Multiplier	
Color	Multiplier
927	0.93
930	0.97
935	0.99
940	1.00

*83CRI±1.15 Consult factory.

TRIAC & ELV Approved Dimmer List	
Manufacturer	Manufacturer Part Number
Lutron	Glyder GLV-600
	Diva DVLV-600P
	Diva DV-600P
	Diva DVELV-600P(303)
	Maestro MALV-600
	Nova T NT-1000
	Nova T NTELV-600
Leviton	Skylark SLV-600P
	RadioRA2-10ND
	SureSlide 6633
	Illumatech IPE04

0-10V Approved Dimmer List	
Manufacturer	Manufacturer Part Number
Lutron	Diva DVSTV-XX
	Diva DVSTV-453PH-WH1
Leviton	Illumatech 010-IP710-DLZ

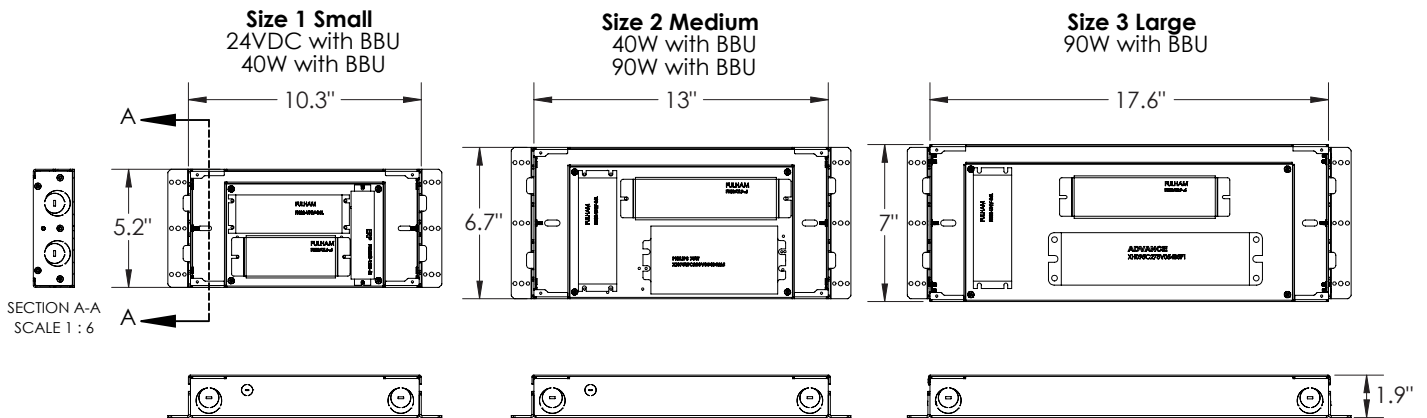
PHOTOMETRICS



FCC4300R Nine-Inch Round Cylinder – Wall or Pendant Mount Down Lighting

BATTERY BACK-UPS

BBUR - BATTERY BACK-UP & LED DRIVER REMOTE (INDOOR), IP20, IK08, NEMA 1, 0°C to +48°C, 30' MAX Distance with 12AWG (w/UNV Option Only) 500 Lumens Nominal in EM Mode



BBUX - BATTERY BACK-UP & LED DRIVER REMOTE (OUTDOOR), IP67, IK10, NEMA 4X, -20°C to +55°C, 30' MAX Distance with 12AWG (w/UNV Option Only) 600 Lumens Nominal in EM Mode

