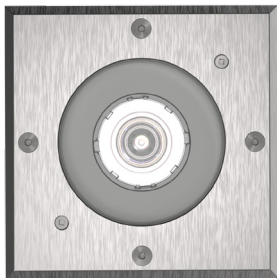


## FCD609S



Date:

Type:

Luminaire:

Project:

Approved:

**FCD609S** 6-inch square inground recessed luminaire with a stainless steel faceplate is IP67 rated for exterior use where inground applications are required.

### SPECIFICATIONS

#### PHYSICAL

beam spread	LED optics: Spot (10°), Narrow Flood (25°), Flood (50°), Wide Flood (70° <i>image free white lens</i> )
dimensions	luminaire: 5.5" Sq x 5.1" D PVC housing: 5.3"Ø x 5.9" D
weight	4 lbs
housing	marine grade, corrosion resistant, high pressure aluminum (includes mounting sleeve)
lens	3/8" thick clear tempered, standard. optional: SR = Slip Resistance, etched outer surface
mounting	concrete pour installation (mounting sleeve included) - drainage required (improperly installed luminaires will void warranty)
ingress protection	IP67 Rated for dry, damp or wet locations with neoprene continuous closed cell gasket to seal out contaminants
finish	316 machined stainless steel faceplate

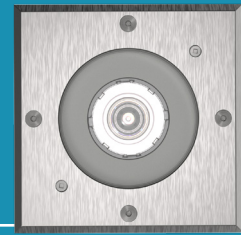
#### PERFORMANCE

color temperature	700K, 3000K, 3500K, 4000K
lumen output	1300 lm
lumen maintenance	L90 > 70,000 hours
color consistency	3SDCM, CRI typical 85, optional: 90+ CRI
operating temperature	max 143°F (62C)
warranty	5 year limited warranty

#### ELECTRICAL

input voltage	Universal 120- 277 VAC
power supply	Integral Class II, electronic, high power factor > 94% @ 120V
certifications	ETL/cETL Listed
standards	UL1598/CSA C22.2 No. 250.0; UI 8750/CSA C22.2 No. 250.13/IES LM-79/LM-80
power consumption	14W @ 120 - 277 VAC
dimming	standard: no dimming, optional: 0-10V (1%)



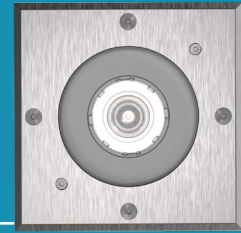


# Ordering Information

## ORDERING INFORMATION

<b>FCD609S</b>			<b>13L</b>		<b>SS</b>			
SERIES	VOLTAGE	CCT	LUMENS	CRI	FINISH	LED OPTICS	DIMMING	OPTIONS
<b>FCD609S</b>	<b>UNV</b> 120 - 277 VAC	<b>27K</b> 2700K <b>3K</b> 3000K <b>35K</b> 3500K <b>4K</b> 4000K	<b>13L</b> 1300 lm (14W)	<b>CRI85</b> 85 CRI (standard) <b>CRI90</b> 90 CRI	<b>SS</b> Stainless Steel	<b>SP</b> Spot (10°) <b>NFL</b> Narrow Flood (25°) <b>FL</b> Flood (50°) <b>WFL</b> Wide Flood (70°) <i>(Image free white lens)</i>	<b>TD</b> Standard Tri-Dim (1% 0-10V, 120-277 VAC), 1%, TRIAC & ELV, 120 VAC Only)	<b>SR</b> Slip Resistance (Frosted Lens)



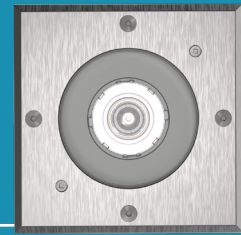


# Dimensions

PRODUCT DIMENSIONS - STANDARD PRODUCT		MOUNTING - <i>mounting sleeve included, one per luminaire</i>	
width	5.5" Sq	PVC well housing	5.3" Ø
depth	5.1" D	well housing depth	5.9" D

marine grade aluminum housing  
with 316 stainless steel faceplate

french drain  
required  
for proper  
installation,  
see installation  
instructions



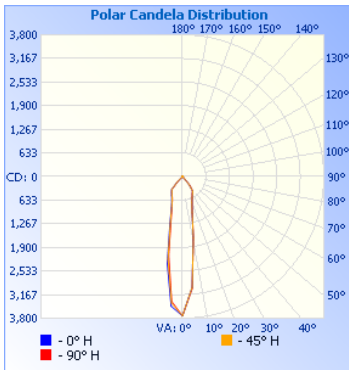
# Photometry

## SPOT DISTRIBUTION

beam spread | 10°

## MID SPOT DISTRIBUTION

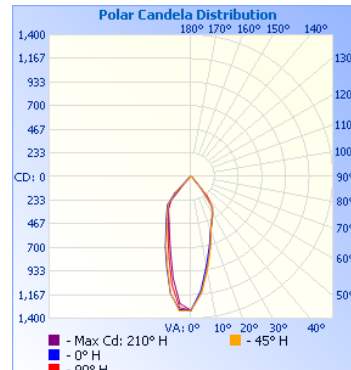
25°



**Illuminance at a Distance**

Center Beam fc	Beam Width
1.7ft	1,291 fc
3.3ft	343 fc
5.0ft	149 fc
6.7ft	83.1 fc
8.3ft	54.2 fc
10.0ft	37.3 fc

**illuminations testing laboratory:**  
Report #2218



**Illuminance at a Distance**

Center Beam fc	Beam Width
1.7ft	457 fc
3.3ft	121 fc
5.0ft	52.8 fc
6.7ft	29.4 fc
8.3ft	19.2 fc
10.0ft	13.2 fc

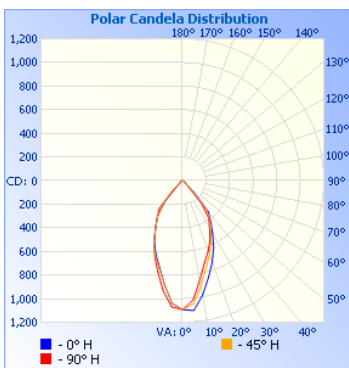
**illuminations testing laboratory:**  
Report #2219

## FLOOD DISTRIBUTION

beam spread | 50°

## WIDE FLOOD DISTRIBUTION

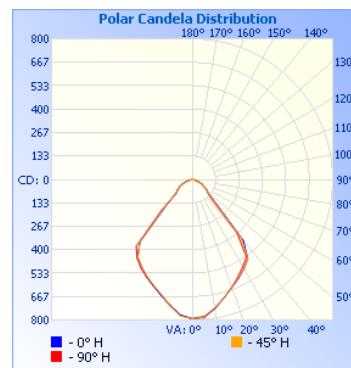
70°



**Illuminance at a Distance**

Center Beam fc	Beam Width
1.7ft	378 fc
3.3ft	100 fc
5.0ft	43.7 fc
6.7ft	24.3 fc
8.3ft	15.9 fc
10.0ft	10.9 fc

**illuminations testing laboratory:**  
Report #2220



**Illuminance at a Distance**

Center Beam fc	Beam Width
1.7ft	205 fc
3.3ft	54.5 fc
5.0ft	23.7 fc
6.7ft	13.2 fc
8.3ft	8.61 fc
10.0ft	5.93 fc

**illuminations testing laboratory:**  
Report #2221