



FCP664



(Shown with black
custom color finish)

Date:

Type:

Fixture:

Project:

Approved:

FCP664 10" Pendant light is an adjustable cable mount fixture with die-cast aluminum shade frame over etched aluminum or glass shade that comes in a variety of color options.



SPECIFICATIONS

PHYSICAL

dimensions	fixture: 9.65" Ø x 11.5" H mounting plate: 4.25" Ø D x 2.42" H
weight	8 lbs
housing	marine grade, corrosion resistant, heavy gauge aluminum
shade	standard: die-cast aluminum shade frame; glass shade with framed tempered etched perimeter glass lens and clear center surface optional: polished exterior, etched aluminum (EA) reflector with anodized etched interior
mounting	mounts directly to standard junction box; grip-lock aviation cable supplied; adjustable cable (8"-120") standard
ingress protection	IP20 : dry locations with neoprene continuous closed cell gasket to seal out contaminants
finish	Six stage cleaning and saline pre-treatment. TGIC polyester powder coat finish

PERFORMANCE

color temperature	2700K	3000K	3500K	4000K	
lumen output	2000 lm 3000 lm				
lifetime	> 70,000 hours / L70 or better				
color consistency	3 SDCM 85 or 90 CRI				
operating temperature	-13°F to 104°F (-25°C to 40°C)				
junction temperature	73°C @ T _A 25°C				
warranty	5-Year limited warranty (refer to website for details)				

ELECTRICAL

input voltage	Universal 120-277VAC optional: 347VAC (integral)
power supply	integral Class II, electronic high-power factor > 94% @120V
certifications	ETL / cETL Listed, CEC Title 24 JA8 compliant (only 90CRI)
standards	UL1598/CSA C22.2 No. 250.0; UI 8750/CSA C22.2 No. 250.13/IES LM-79/LM-80
power consumption	28W @ 3000 lm (maximum) 18W @ 2000 lm (minimum)
dimming	LD 0-10V Dimming (1%) ELV (120V only)

Due to continuous development and improvements, specifications are subject to change without notice. FC Lighting reserves the right to change lab test details or specifications without notice. Product use certifies agreement to FC Lighting terms and conditions. FCC Series Cylinder Lights are engineered and produced in our Illinois manufacturing facility.



US Commercial Lighting Manufacturer Since 1982

Specification Sheet

Ordering Information



(Shown with black custom color finish)

ORDERING INFORMATION

Example: FCP664-UNV-35K-CRI85-30L-CC-EA-LD

FCP664														
Series	Voltage		CCT		CRI		Lumens		Finish	Shade Color		Options		
FCP664	UNV	UNV 120V-277V	27K	2700K	CRI85	85 CRI	20L	2000 lm (18W)	CC	Custom Color	EA	Etched Aluminum	LD	0-10V Dimming, 1%
	120V	120V AC	3K	3000K	CRI90	90 CRI	30L	3000 lm (28W)	TG	Textured Gray	WH	White	ELV	ELV Dimming (120V Only)
	347V	347V AC (remote)	35K	3500K										
			4K	4000K										

REMOTE DRIVER & BATTERY BACKUP

FCP664R															
Series		Voltage		CCT		CRI		LUMENS		Finish		Shade Color		Options	
FCP664R [†]	UNV	UNV 120V-277V	27K	2700K	CRI85	85 CRI	20L	2000 lm (18W)	CC	Custom Color	EA	Etched Aluminum	LD	0-10V Dimming, 1%	
			3K	3000K	CRI90	90 CRI	30L	3000 lm (28W)	TG	Textured Gray	WH	White	BBUR [‡]	Battery Backup Remote (Indoor)	
			35K	3500K									N/A	Leave Blank for Remote Driver Only	
			4K	4000K										(without Battery Backup)	

N/A Leave Blank for Remote Driver Only (without Battery Backup)

[†] LED DRIVER REMOTE (INDOOR) IP20, IK08, NEMA 1, -20°C to +50°C, 30' MAX Distance with 12AWG.

*Consult factory for outdoor remote driver only.

[‡] Battery Back-up & LED Driver Remote (INDOOR), IP20, IK08, NEMA 1, 0°C to +48°C, 30' MAX Distance with 12AWG (w/UNV Option Only)

Shade Colors



Etched Aluminum

White

Consult Factory for other options and configurations.

To ensure you receive proper configurations for your lighting specifications, contact us directly about any unique application requirements. This may include but not be limited to lumen output, mounting needs, or electrical requirements.

Due to continuous development and improvements, specifications are subject to change without notice. FC Lighting reserves the right to change lab test details or specifications without notice. Product use certifies agreement to FC Lighting terms and conditions. FCC Series Cylinder Lights are engineered and produced in our Illinois manufacturing facility.



US Commercial Lighting Manufacturer Since 1982

Specification Sheet

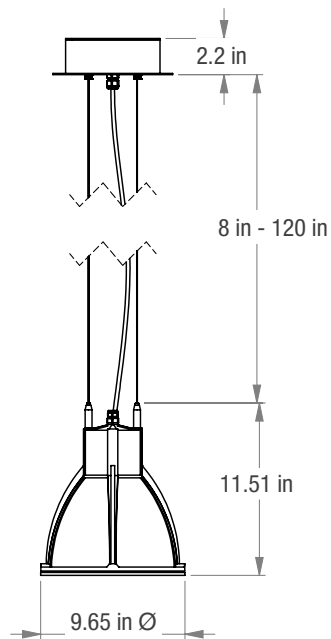
Dimensions

(Shown with black
custom color finish)



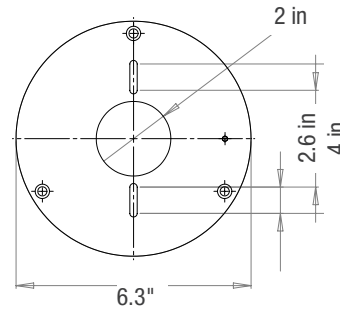
PRODUCT DIMENSIONS - STANDARD PRODUCT

width	9.65" Ø
height (shade)	11.51" H
height (mounting)	2.2" H



MOUNTING - j-box sold by others

mounting plate width	6.3" W
----------------------	--------



2.6" - 4" mounting diameter

j-box mounting plate:
included with fixture and
mounts flush to surface

Due to continuous development and improvements, specifications are subject to change without notice. FC Lighting reserves the right to change lab test details or specifications without notice. Product use certifies agreement to FC Lighting terms and conditions. FCC Series Cylinder Lights are engineered and produced in our Illinois manufacturing facility.

 US Commercial Lighting Manufacturer Since 1982

© FC Lighting

3609 Swenson Ave. • St. Charles, IL • 60174 | fcighting.com | 800.900.1730

Specification Sheet

JC-DM-110725

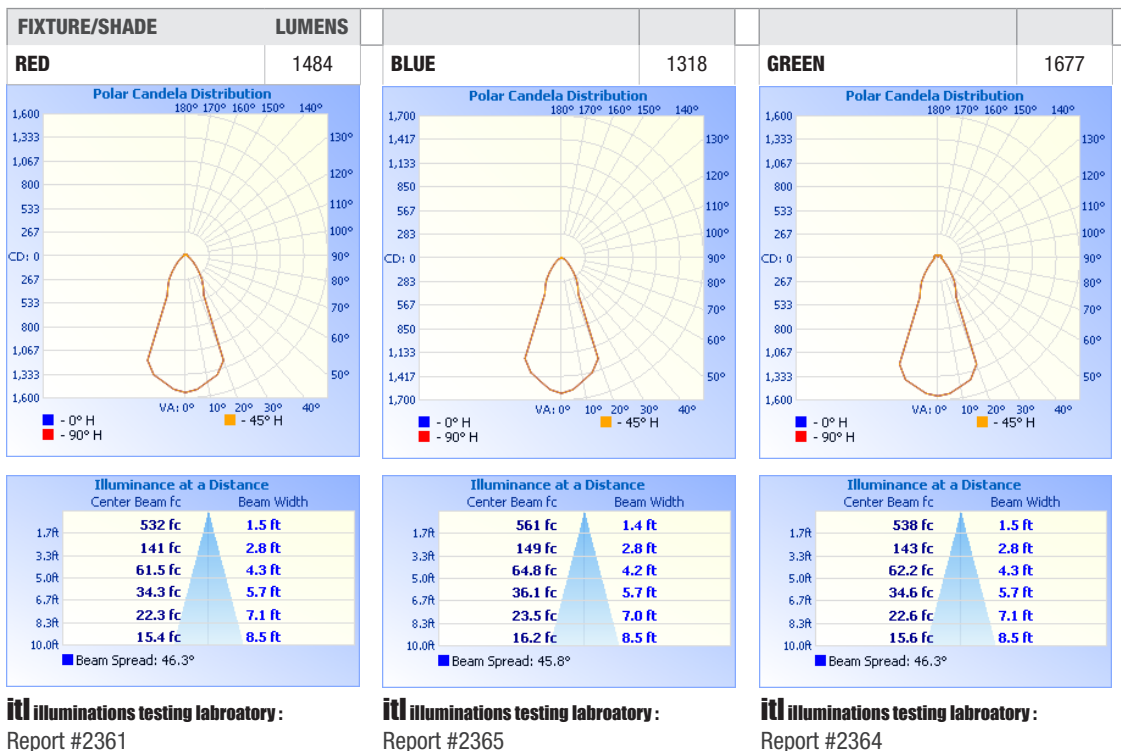
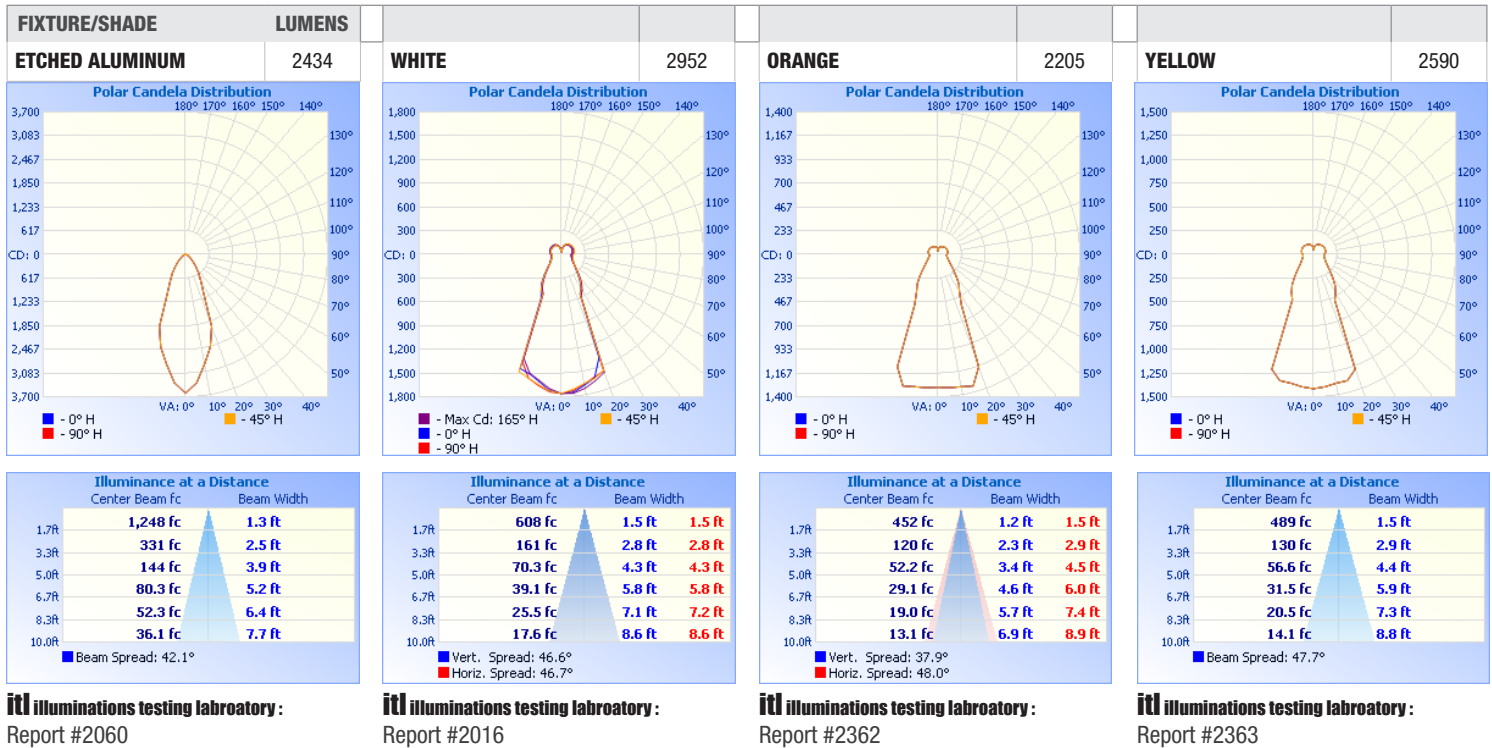
Photometry

FCP664



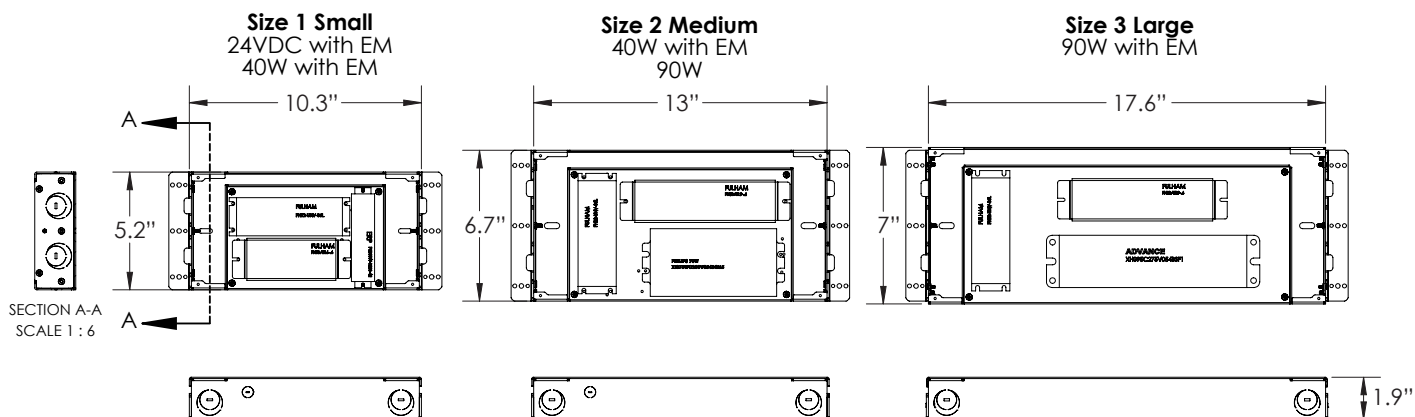
(Shown with black custom color finish)

OPTICAL DISTRIBUTION

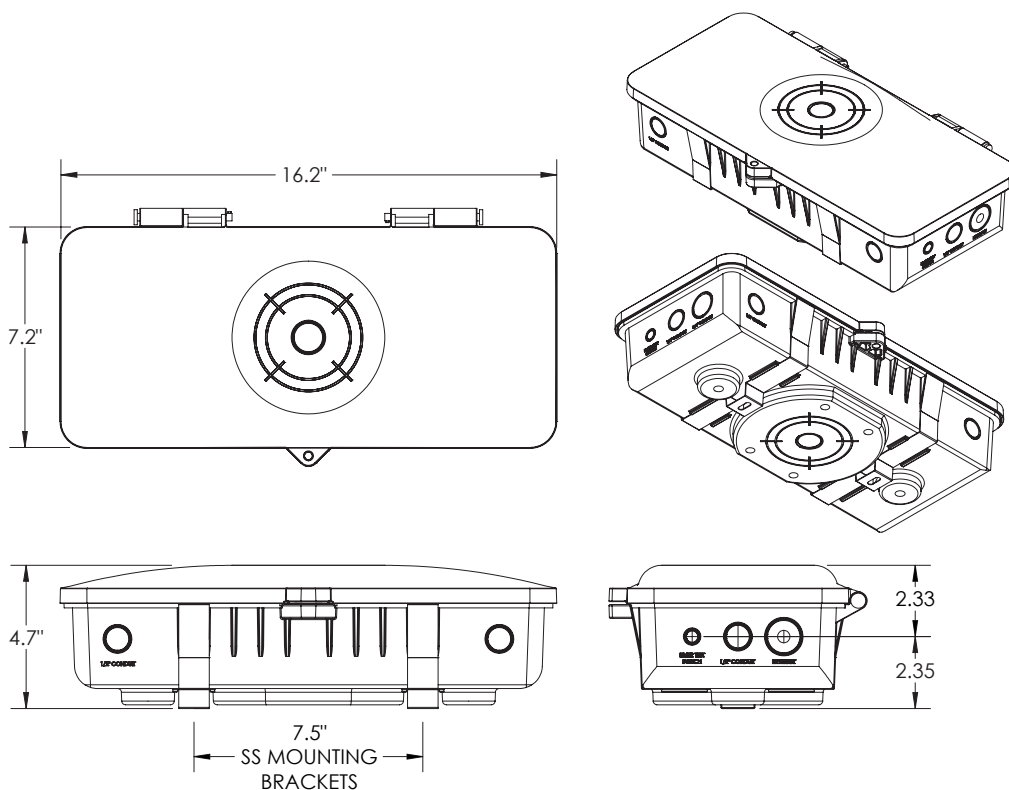


BATTERY BACK-UPS

BBUR - BATTERY BACK-UP & LED DRIVER REMOTE (INDOOR), IP20, IK08, NEMA 1, 0°C to +48°C, 30' MAX Distance with 12AWG (w/UNV Option Only)



BBUX - BATTERY BACK-UP & LED DRIVER REMOTE (OUTDOOR), IP67, IK10, NEMA 4X, -20°C to +55°C, 30' MAX Distance with 12AWG (w/UNV Option Only)



Due to continuous development and improvements, specifications are subject to change without notice. FC Lighting reserves the right to change lab test details or specifications without notice. Product use certifies agreement to FC Lighting terms and conditions. FCC Series Cylinder Lights are engineered and produced in our Illinois manufacturing facility.



US Commercial Lighting Manufacturer Since 1982

Specification Sheet