

Date:

Approved:

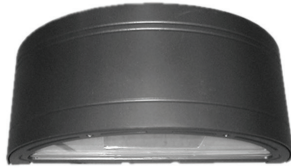
Type:

Luminaire:

Project:

FCW1035

Up/Down, 18" Wide bi-direction
Die-Cast Aluminum Exterior
Architectural Wall Mount.



SPECIFICATION

MOUNTING

- Mounts directly to standard outlet box. Additional mounting holes allow unit to be attached directly to mounting surface.
- Can be used as an up light.

CONSTRUCTION

- Marine grade, corrosion resistant, heavy walled, high pressure die-cast aluminum. Die-cast back mounting plate.
- Impact resistant, clear, tempered glass. Precision formed semi-specular aluminum for maximum reflectance.
- Rubber silicone to seal contaminants. Captive stainless steel, tamper resistant hex socket screws.

LED

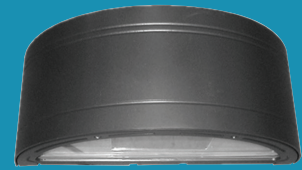
- Lumens stated are the minimum delivered out of the luminaire. LED lifetime is greater than or equal to 70,000 hours with the lumen depreciation greater than L70. All of our luminaires are tested to LM 80 with an 80 CRI, color consistency of 4 SDCM. Integral power supply standard. Input voltage 120 VAC or 277 VAC. Consult factory for dimming and any single color options. FCW1035 delivers the same lumens each direction, up and down.

FINISH

- Six stage chemical iron phosphate conversion pre-treatment. Polyester powder coat finish, 18 µm Min., 5,000 hour salt spray test (ASTM B117) compliant with Florida / AAMA 2604 specification.

LISTING

- UL & cUL/ETL, U.S. and CA listed for wet locations. IP65 rating.



Ordering Information

ORDERING INFORMATION

FCW1035												
MODEL	VOLTAGE	CCT	LUMENS (UP/DOWN)		FINISH		OPTICS		OPTIONS			
FCW1035 Up/Down	120V	27K	2700K	10L	1000 lm (20W)		BKE	Black	Up	Down	LD	0-10V Dimming
	277V	3K	3000K	13L	1325 lm (28W)		BRE	Bronze	UNFL	Narrow Flood	DNFL	
	347V	35K	3500K	18L	1750 lm (36W)		GRE	Graphite Grey	UFL	Flood	DFL	
		4K	4000K		* Lumen Output in each direction (i.e. 10L = 10L in the up direction and 10L in the down direction). Unequal lumen outputs not offered. Wattage listed is total wattage of the fixture.		SLE	Silver	UWFL	Wide Flood	DWFL	
							WHE	White				
						CCE	Custom Color					

REMOTE DRIVER & BATTERY BACKUP

FCW1035R		UNV														
MODEL		VOLTAGE		CCT		LUMENS (UP/DOWN)		FINISH		OPTICS		OPTIONS				
FCW1035R [†]	Up/Down	UNV	120 - 277 VAC	27K	2700K	10L	1000 lm (20W)	BKE	Black	Up	Down	LD	0-10V Dimming			
				3K	3000K	13L	1325 lm (28W)	BRE	Bronze	UNFL	Narrow Flood	DNFL	BBUR ¹	Battery Backup Remote (Indoor)		
				35K	3500K	18L	1750 lm (36W)	GRE	Graphite Grey	UFL	Flood	DFL	BBUX ²	Battery Backup Remote (Outdoor)		
				4K	4000K	* Lumen Output in each direction (i.e. 10L = 10L in the up direction and 10L in the down direction). Unequal lumen outputs not offered. Wattage listed is total wattage of the fixture.				SLE	Silver	UWFL	Wide Flood	DWFL	DRR ¹	LED Driver Only Remote (Indoor)
								WHE	White					DRX ²	LED Driver Only Remote (Outdoor)	
								CCE	Custom Color							

[†] LED DRIVER REMOTE (INDOOR) IP20, IK08, NEMA 1, -20°C to +50°C, 30' MAX Distance with 12AWG.

* Consult factory for outdoor remote driver only.

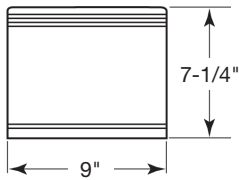
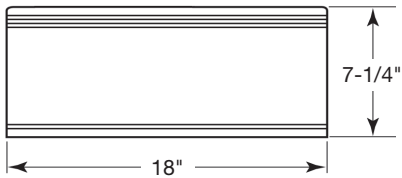
¹ Battery Back-up & LED Driver Remote (INDOOR), IP20, IK08, NEMA 1, 0°C to +48°C, 30' MAX Distance with 12AWG (w/UNV Option Only)

² Battery Back-up & LED Driver Remote (OUTDOOR), IP67, IK10, NEMA 4X, -20°C to +55°C, 30' MAX Distance with 12AWG (w/UNV Option Only)



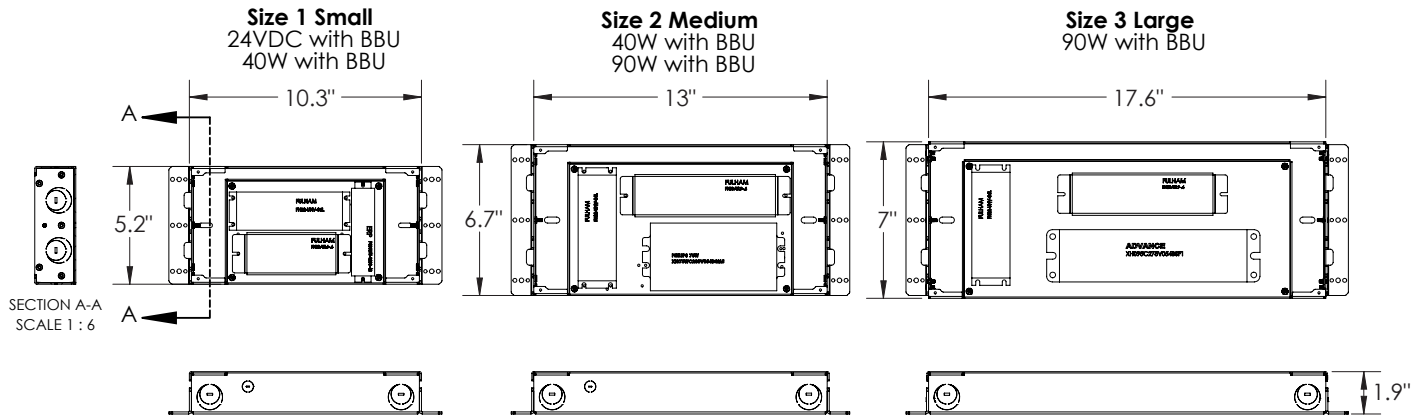
Dimensions

FCW1035



BATTERY BACK-UPS

BBUR - BATTERY BACK-UP & LED DRIVER REMOTE (INDOOR), IP20, IK08, NEMA 1, 0°C to +48°C, 30' MAX Distance with 12AWG (w/UNV Option Only)



BBUX - BATTERY BACK-UP & LED DRIVER REMOTE (OUTDOOR), IP67, IK10, NEMA 4X, -20°C to +55°C, 30' MAX Distance with 12AWG (w/UNV Option Only)

