



FCSL1016 Step Light

INTERIOR/EXTERIOR LIGHTING



FCSL1016 Step Light

Long lasting indoor/outdoor motion sensor LED step light with photocell sensor auto on/off dusk to dawn and PIR motion sensor integrated in faceplate. This step light creates a warm white light with using only 3W of energy. Great for stairways, pathways, driveways, patios or any landscape lighting needs.

EXTERIOR APPLICATIONS

WALKWAYS



PATIOS



FEATURES

- IP65 Rated
- 120V
- CRI 90
- 3000K White
- 80 lm (2.2W)

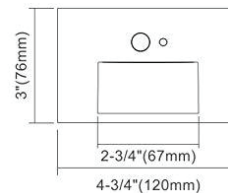


Motion detection activated, then turns off after 1 minute

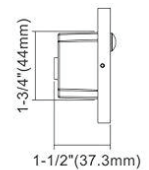


Light automatically turns on when surrounding lights are turned off or at dusk. The light remains on only for 1 minute, after 1 minute the motion sensor overrides the light switching on/off until dawn or if surrounding lights are turned back on."

DIMENSION

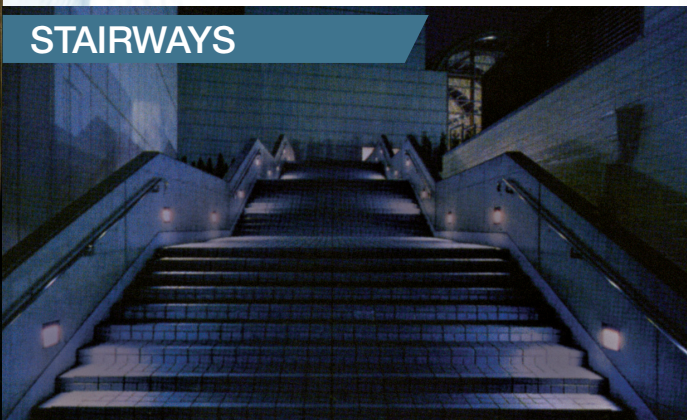


Front



Side

STAIRWAYS



Light up your step with this
simple, but significant step light.

INTERIOR APPLICATIONS

This step light projects a
warm down light suitable for
a wide variety of interior and
exterior applications.



HOSPITALS

RETIREMENT HOMES

Lights automatically
turn on when motion is
detected. Also features a
sensor to light up fixture at
night or in dark environments.



FCSL1016A Healthcare Step Light

Long lasting outdoor motion sensor Amber LED step light with Photocell sensor auto on/off dusk to dawn and PIR motion sensor integrated in faceplate. A true AMBER LED option is available for healthcare applications. This option consists on an AlInGap chip technology (Aluminum, Indium, Gallium and Phosphorous) to produce amber color with spectral control above the 560nm band. This allows to light a space without disrupting Healthcare spaces when nonblue light applications are needed.

FC 
OUTDOOR LIGHTING



HEALTHCARE

TRUE AMBER LED

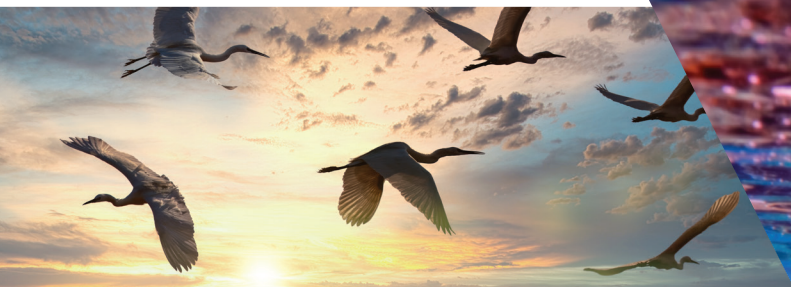


FCSL1016A Wildlife Step Light

Using long wavelength light sources is less disruptive to marine turtles than white or multi-colored lights. We do this by choosing the right LED at the source. No filters, no gels, no special lenses. A true AMBER LED consist of an AlInGap chip technology (Aluminium, Indium, Gallium and phosphorous) to produce amber color with spectral control above the 560nm band. This allows to light a space without disrupting Wildlife.



Wildlife Lighting Certified
by the Florida Fish & Wildlife
Conservation Commission



BIRD MIGRATION PATTERNS



FROG MATING CALL ACTIVITY



TURTLE NESTING & HATCHLINGS





BUKAS[™]
LIGHTING GROUP

FCSL1016-BRO
DH-2121