

# FCB5500 RGBW - INSTALLATION INSTRUCTIONS

CAUTION: BEFORE CONNECTING THE FIXTURE TO A POWER SUPPLY, MAKE SURE THE POWER IS SWITCHED OFF.

## DETAILED ILLUSTRATION

### GENERAL:

1. Before starting the installation, make sure all electricity has been turned off and electrical breaker has been locked out and tagged out.
2. To ensure the success of the installation, be sure to read these instructions and review the diagrams thoroughly before beginning.
3. All electrical connections must be in accordance with local codes, ordinances, or the National Electrical Code.

**NOTE:** The important safeguards and instructions appearing in this manual are not meant to cover all possible conditions and situations that may occur.

### 1) FOOTING & BASE PLATE MOUNT:

All footings should be poured to direct water away from the base of the fixture. Drainage should be provided to prevent water from collecting under and around the fixture. Use Anchor Bolt template.

**Note:** Threads should be min. 2" above concrete pour. **Fig A**

**Note:** Conduit should be min. 1"-3"(Max) above concrete pour. **Fig B**

**Note:** Wires should be min. 6"-12"(Max) above concrete pour. **Fig B**

### 2) INSTALL MOUNTING BASE:

Remove the Base Mount from the column housing by removing the (3) set screws around the bottom edge of the housing.

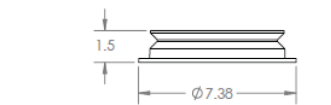
- Set screw size: 1/4-20 • Bit Size: 1/8" hex • Torque: 50 in-lb

Once footing is set and level, install mounting base. Tighten nuts snug to hold base in place. **TIGHTEN EVENLY, DO NOT OVERTIGHTEN.** Place a continuous bead of silicone between the mounting base and the ground.

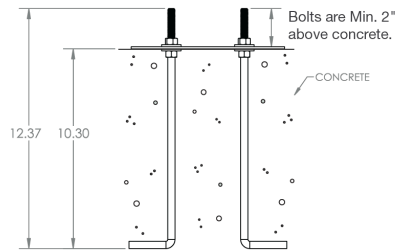
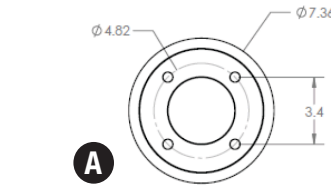
### 3) WIRING:

Make wiring connections at the bottom. Use included waterproof wire nuts. All wiring connections must be made in accordance with local electrical codes, ordinances, and the National Electric Code. Follow wiring diagram for DMX. **Fig C**

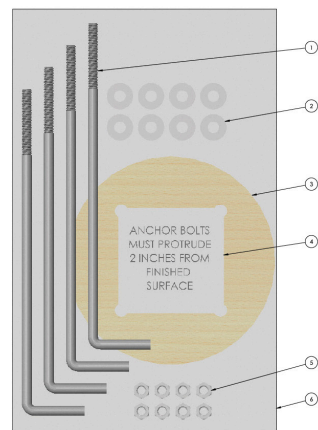
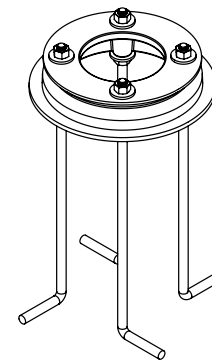
- 4) Place column housing over mounting base. Tighten the (3) set screws evenly until fixture is held firmly in a level position. **Fig D**



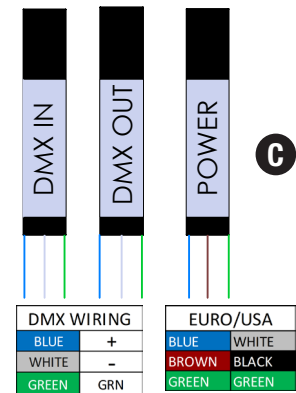
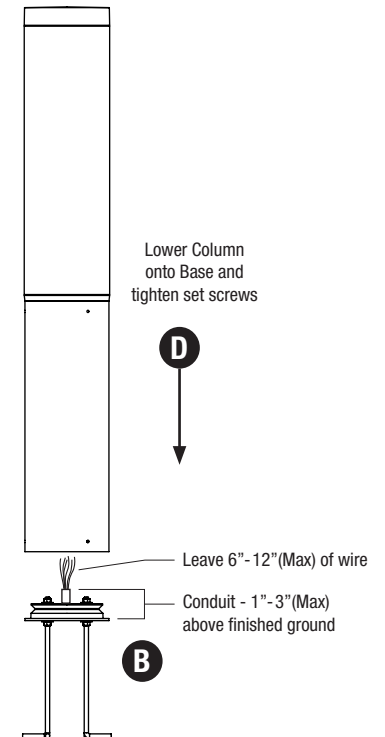
mounting hole pattern



### Anchor Bolt & Base Mount Assembly



#	Anchor Bolt Template Assembly (A05500) (Includes below items)	
1	L-Hook Anchor Bolt (X91603A120)	Qty. 4
2	Flat Washers	Qty. 8
3	Anchor Bolt Wood Template	Qty. 1
4	Anchor Bolt Label	Qty. 1
5	Hex Nuts	Qty. 8
6	Plastic Bag, Sealed	Qty. 1



DMX WIRING		EURO/USA	
BLUE	+	BLUE	WHITE
WHITE	-	BROWN	BLACK
GREEN	GRN	GREEN	GREEN