

WARNING: DISCONNECT POWER BEFORE INSTALLING OR SERVICING TO AVOID ELECTRICAL SHOCK. DO NOT EXCEED FIXTURE SPECIFIED VOLTAGE. DO NOT USE IF FIXTURE, PARTS OR CONNECTORS ARE DAMAGED. NOTE: THESE INSTRUCTIONS DO NOT COVER ALL DETAILS OR VARIATIONS IN EQUIPMENT NOR DO THEY PROVIDE FOR EVERY POSSIBLE SITUATION DURING INSTALLATION.

GENERAL:

1. Before starting the installation, make sure all electricity has been turned off and electrical breaker has been locked out and tagged out.
2. To ensure the success of the installation, be sure to read these instructions and review the diagrams thoroughly before beginning.
3. All electrical connections must be in accordance with local codes, ordinances, or the National Electrical Code.

1) FOOTING DESIGN:

All footings should be poured to direct water away from the base of the fixture. Drainage should be provided to prevent water from collecting under and around the fixture. Anchors must be located per the dimensions shown. Anchor Bolts are galvanized steel. The unthreaded portion should be in the concrete and the threaded portion should be above the concrete.

2) INSTALL MOUNTING RING:

Remove the mounting plate from the bottom of the fixture by loosening the (2) set screws around the bottom edge of the housing. DO NOT remove screws completely. Once the footing is set and level, install the mounting ring. Place a continuous bead of silicone between the mounting ring and the ground. Tighten nuts snug to hold ring in place. **TIGHTEN EVENLY AND DO NOT OVERTIGHTEN.**

3) WIRING:

Make wiring connections. All wiring connections must be made in accordance with local electrical codes, ordinances, and the National Electric Code.

- 4) Place bollard housing over mounting ring. Tighten the (2) set screws evenly until fixture is held firmly in position.

Technical drawing of the 1000 Series Vertical Mounting Bracket. The drawing includes two views: a front view on the left and a side view on the right. Dimensions are provided in inches.

Front View Dimensions:

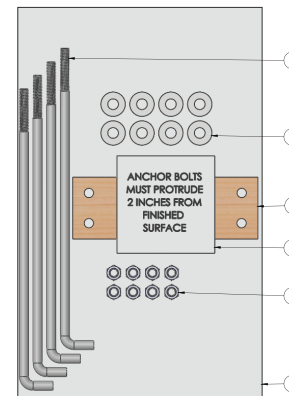
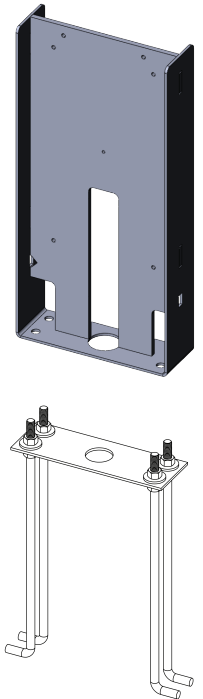
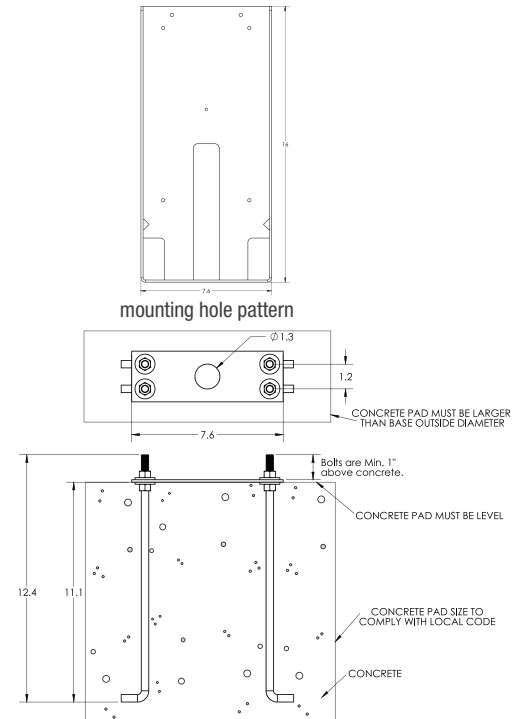
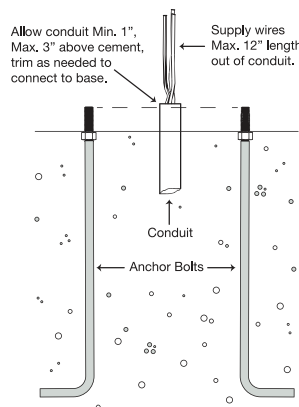
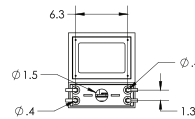
- Top flange width: 8
- Top flange thickness: 2.6
- Top flange height: 3
- Main body height: 39
- Total height: 42

Side View Dimensions:

- Top flange width: 9
- Top flange thickness: 6

Assembly Note:

SS 1/4" - 20 x .625" SET SCREW
2 PLACES @ 180 DEGREES



#	ANCHOR BOLT TEMPLATE ASSEMBLY (A00690) (Includes below items)	QTY.
1	3/8" x 12" x 1" L hook Anchor Bolt (945238-4)	4
2	3/8" FLAT WASHER H-D GALV STEEL	8
3	ANCHOR BOLT WOOD TEMPLATE	1
4	ANCHOR BOLT LABEL	1
5	3/8"-16 HEX NUT H-D GALV STEEL	8
6	PLASTIC BAG, SEALED	1

INSTALLATION INSTRUCTIONS - for Cane Detection **FCBT690**

WARNING: DISCONNECT POWER BEFORE INSTALLING OR SERVICING TO AVOID ELECTRICAL SHOCK. DO NOT EXCEED FIXTURE SPECIFIED VOLTAGE. DO NOT USE IF FIXTURE, PARTS OR CONNECTORS ARE DAMAGED. NOTE: THESE INSTRUCTIONS DO NOT COVER ALL DETAILS OR VARIATIONS IN EQUIPMENT NOR DO THEY PROVIDE FOR EVERY POSSIBLE SITUATION DURING INSTALLATION.



800.900.1730
3609 Swenson Ave.
St. Charles, IL 60174

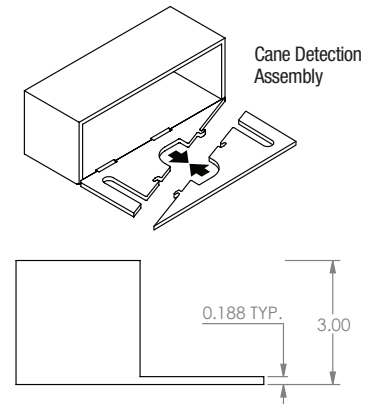
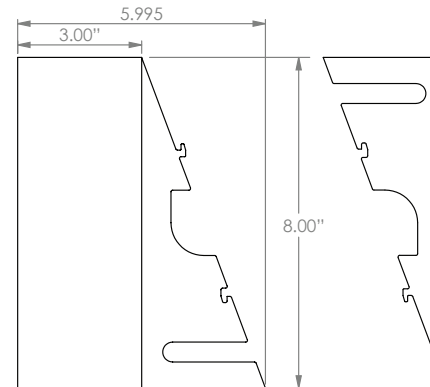
NOTE: Includes models; BT690, BT690A

DETAILED ILLUSTRATION

GENERAL:

1. Before starting the installation, make sure all electricity has been turned off and electrical breaker has been locked out and tagged out.
2. To ensure the success of the installation, be sure to read these instructions and review the diagrams thoroughly before beginning.
3. All electrical connections must be in accordance with local codes, ordinances, or the National Electrical Code.

NOTE: The important safeguards and instructions appearing in this manual are not meant to cover all possible conditions and situations that may occur. This product must be installed in accordance with national and local electrical and construction codes by a person familiar with the construction and operation of the product and the hazards involved. Failure to comply with the following instructions may result in injury or death.



INSTALLATION

INSTALLATION FOR CANE DETECTION (FOR BT690 MODEL ONLY)

Ensure concrete is setup first.

- 1) Loosen nuts on Anchor Bolts.
- 2) Lift up on Base Mount.
- 3) Slide 2-piece Cane Detection assembly under the Base Mount, one on each side, aligning slots with Anchor Bolts.
- 4) Engage Locking Tabs in place under the Base Mount. Then retighten Anchor Bolts to hold Base Mount and Cane Detection assembly in place.

IMPORTANT: Concrete should be completely dry before securing Housing to Base.

5. Slide bollard Housing over the Base Mount
6. Tighten Set Screws at base of Housing.
7. Turn on breaker and check operation.

NOTE: Unauthorized field repair will void warranty. Failure to properly set fixture to surface may result in nullifying the warranty.

