

FCD910 Series w/Adjustable Optics (ADJ) (ALL GROUND) - INSTALLATION INSTRUCTIONS

CAUTION: BEFORE CONNECTING THE FIXTURE TO A POWER SUPPLY, MAKE SURE THE POWER IS SWITCHED OFF.

Includes: FCD910 with Adjustable LED Base (ADJ) Option

GENERAL:

1. Before starting the installation, make sure all electricity has been turned off and electrical breaker has been locked out and tagged out.
2. To ensure the success of the installation, be sure to read these instructions and review the diagrams thoroughly before beginning.
3. All electrical connections must be in accordance with local codes, ordinances, or the National Electrical Code.

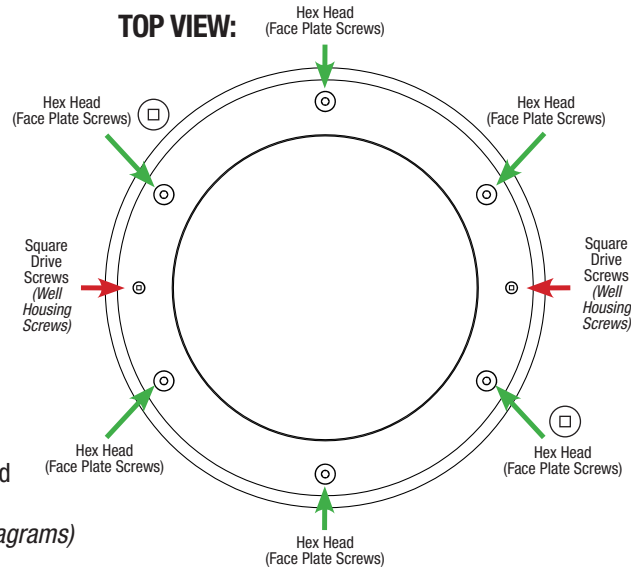
NOTE: The important safeguards and instructions appearing in this manual are not meant to cover all possible conditions and situations that may occur.

INSTALL FOR CONCRETE POUR:

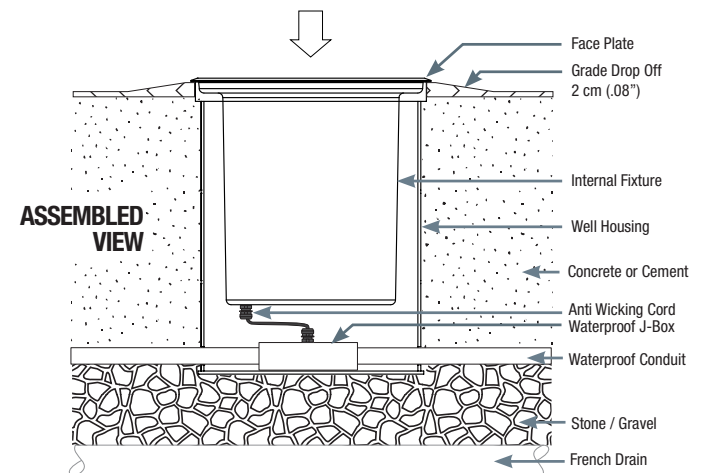
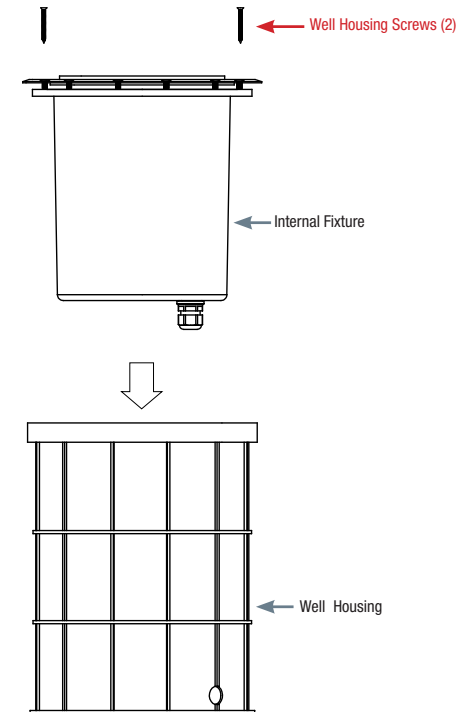
IMPORTANT: Concrete installation is required for drive over applications. Improper installation will void warranty.

- 1) Make sure proper drainage is arranged to avoid accumulation of water around the fixture. French Drain recommended in clay type soil. Add several inches of stone at the bottom of the Well Housing, as illustrated. (Reference Pg. 3 Diagrams)
- 2) With the Adjustable Optic mode, you will need to orientate the fixture and housing so the optic will point in the desired direction. The optic adjusts left and right up to 30° (See Pg. 2 Diagrams).
- 3) Remove (2) Well Housing Screws from front Face Plate. (See RED arrows above) This will allow the plastic Well Housing to be removed from the Fixture. Set Fixture aside.
- 4) Insert and set the Well Housing in the ground. Make sure the installation height is within 2 cm above grade. This will promote water run-off on the finished ground surface.
- 5) After concrete is in place, level the Well Housing so it is flush with the pavement surface.
- 6) Now, take the Fixture assembly and remove the Face Plate by removing the (6) Face Plate Screws (See Green arrows above). Once removed, set the Face Plate aside to access the inside of the fixture. Set fixture inside Well Housing. The Adjustable Optic (ADJ) is adjusted by pushing the left and/or right edges of the Optic Platform Base which pivots on the other sides. Additional adjustments can be made by loosening and tightening the screws around the optic for horizontal adjustment (See Pg. 2). Once satisfied with position of LED, clean all seals, lens frame **and** housing opening of any debris and Re-install lens and Face Plate.
- 7) Connect wiring, by running cord to a waterproof J-Box or in accordance with local codes or NEC standards. Use silicone filled (waterproof) wire nuts to make connections where needed. Fixture is provided with 5' cord.
- 8) Insert the fixture into the Well Housing, adding a bead of silicone where the edge of the fixture contacts the Well. Then secure the Fixture to the Well Housing using the Square Drive Screws. Tighten screws evenly and avoid overtightening.

TOP VIEW:



DETAILED ILLUSTRATION



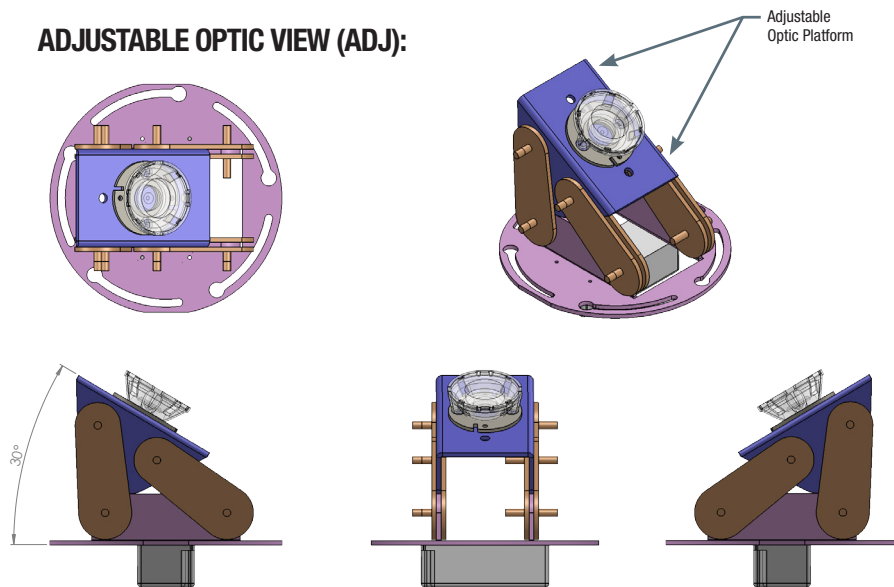
FCD910 Series w/Adjustable Optics (ADJ) (ALL GROUND) - INSTALLATION INSTRUCTIONS

CAUTION: BEFORE CONNECTING THE FIXTURE TO A POWER SUPPLY, MAKE SURE THE POWER IS SWITCHED OFF.

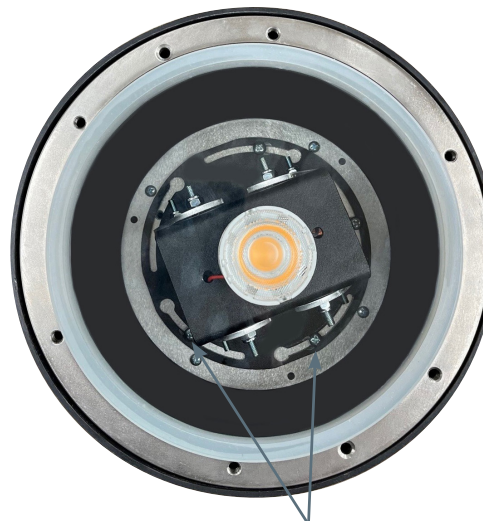
Includes: FCD910 with Adjustable LED Base (ADJ) Option

FC 
OUTDOOR LIGHTING
800.900.1730
3609 Swenson Ave.
St. Charles, IL 60174

ADJUSTABLE OPTIC VIEW (ADJ):



(OPTIC ADJUSTABLE LEFT & RIGHT UP TO 30°)



These screws can be loosened and retightened
for an additional 45° of adjustment



FIXTURE WITH FACE PLATE



FIXTURE WITHOUT FACE PLATE

NOTE: The FCD910 Series have an Ingress Protection 67 rating (IP67), meaning it is impenetrable to dust and can survive immersion in water for 30 minutes.

CONFIDENTIAL - ©FC LIGHTING, INC.

THIS DOCUMENT IS THE PROPRIETARY PROPERTY OF FC LIGHTING, INC. ANY UNAUTHORIZED TRANSFER, USE OR REPRODUCTION IS STRICTLY PROHIBITED.

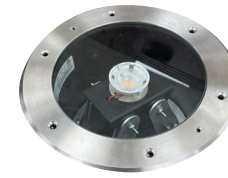
AR-DM-121522

iiFCD910

FCD910 Series w/Adjustable Optics (ADJ) (ALL GROUND) - INSTALLATION INSTRUCTIONS

CAUTION: BEFORE CONNECTING THE FIXTURE TO A POWER SUPPLY, MAKE SURE THE POWER IS SWITCHED OFF.

Includes: FCD910 with Adjustable LED Base (ADJ) Option



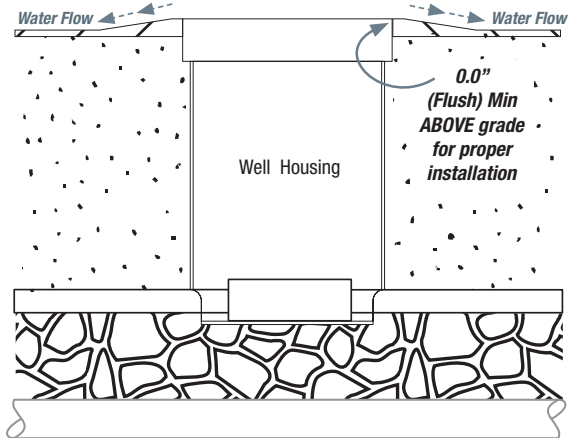
FC 
OUTDOOR LIGHTING

800.900.1730
3609 Swenson Ave.
St. Charles, IL 60174

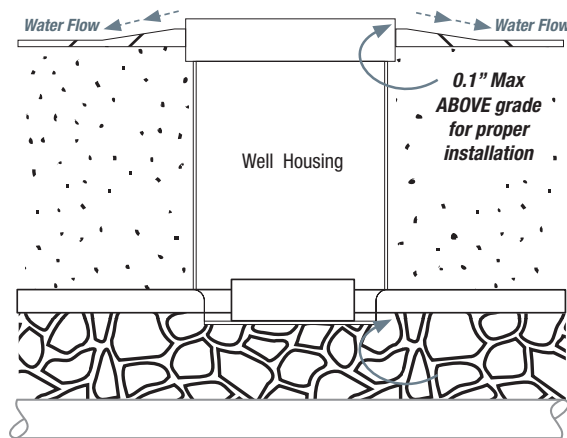
SIDE VIEWS:



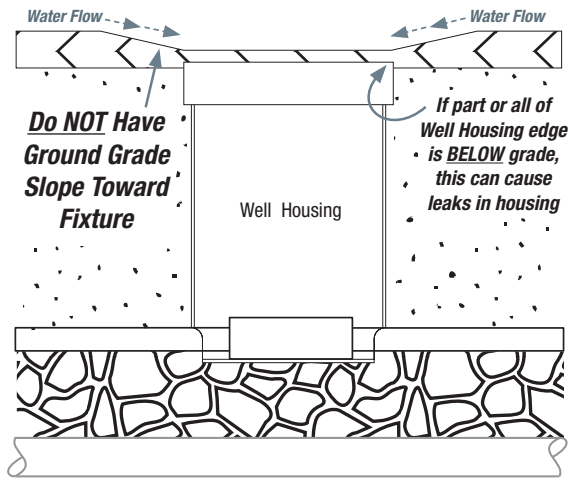
CORRECT: WELL HOUSING FLUSH TOP



CORRECT: WELL HOUSING ABOVE GRADE



NOT CORRECT: WELL HOUSING BELOW GRADE



TOP VIEW:



**SURROUNDING GRADE
MUST DROP-OFF WITHIN 12"
OF FIXTURE**

**CHECK ALL AROUND WELL HOUSING
FOR ABOVE GRADE AND DRAINAGE
AWAY FROM FIXTURE**

