

FCB8C-4WN03



Date:

Type:

Fixture:

Project:

Approved:

FCB8C-4WN03 Exterior die-cast aluminum, 8" nominal diameter bollard with a 4-way, 3" high window opening.

SPECIFICATIONS

PHYSICAL

dimensions	39.5" H x 7.87" Ø
weight	18 lbs
housing	Marine grade, corrosion resistant, heavy gauge extruded aluminum
lens	Impact resistant, UV stabilized, opal, polycarbonate diffuser
mounting	Heavy wall base bracketing for bollard installation provides a unique mounting solution, so the tower body anchors flush to the ground without the appearance of a base plate, anchor bolts included
ingress protection	IP66: dry, damp, or wet locations
finish	Available in Black, Bronze, Graphite Grey, Silver, White and Custom Colors. Six stage chemical iron phosphate conversion pre-treatment. Polyester powder coat finish, 18 µm Min., 5000hr salt spray test (ASTM B117) compliant with Florida / AAMA 2604 specification.

PERFORMANCE

color temperature	2700K	3000K	3500K	4000K
lumen output	763	803	845	890
lumen maintenance	L70 >70,000 hours			
color consistency	3 SDCM 85 CRI			
operating temperature	-13°F to 104°F (-25°C to 40°C)			
warranty	5 Year limited warranty			

ELECTRICAL

input voltage	Universal 120- 277 VAC optional: 347 VAC 480 VAC
power supply	Integral Class II, electronic, high power factor > 94% @ 120V
certification	ETL/cETL Listed
standards	UL1598 / CSA C22.2 No. 250.0; UL 8750 / CSA C22.2 No. 250.13 / IES LM-79/LM-80
power consumption	30W @ 120 - 277 VAC (maximum)
dimming	0-10V (10%)

Due to continuous development and improvements, specifications are subject to change without notice.
Product use certifies agreement to FC Lighting terms and conditions.



Ordering Information

ORDERING INFORMATION

FCB8C-4WN03			39			9L			DALI DRIVER			
SERIES	VOLTAGE	HEIGHT	CCT	LUMENS	FINISH	OPTIONS						
FCB8C-4WN03	UNV	UNV 120 - 277 VAC	39	39.5"	27K	2700K	9L	890 lm (30W)	BKE	Black	LD	0-10V Dimming (Standard)
	347V	347 VAC			3K	3000K	BRE	Bronze	SP20	20kV Surge Protector		
	480V	480 VAC			35K	3500K	GRE	Graphite Grey	BBU	Battery Backup (Integral)		
	120V	120 VAC (Photo Eye)			4K	4000K	SLE	Silver	SP20-BBU	(2) 20kV Surge Protectors (1/LED Driver, 1/BBU) and Battery Backup (Integral)		
	277V	277 VAC (Photo Eye)			WHE	White						
					CCE	Custom Color	PE120	Photo Eye for 120 VAC				
									PE277	Photo Eye for 277 VAC		
						LAB'	Less Anchor Bolt Kit - for shipment separate of Anchor Bolt Kit					

ANCHOR BOLT KITS

A00836

Anchor Bolt Kit - Complete Anchor Bolt Kit shipped in advance of fixture.

¹ **Note:** Fixture must be mounted into FC Lighting supplied Anchor Bolt Kit shipped with or separate of fixture.

Consult Factory for other options and configurations.

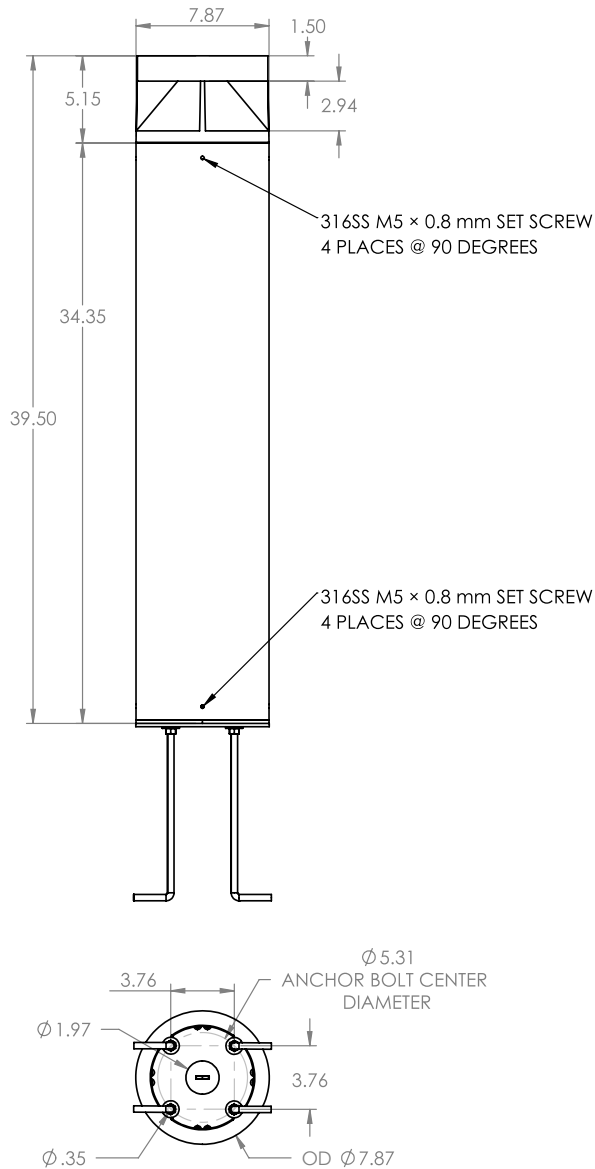
To ensure you receive proper configurations for your lighting specifications, contact us directly about any unique application requirements. This may include but not be limited to lumen output, mounting needs, or electrical requirements.

Due to continuous development and improvements, specifications are subject to change without notice.
Product use certifies agreement to FC Lighting terms and conditions.

Physical



PRODUCT DIMENSIONS - STANDARD PRODUCT



MOUNTING

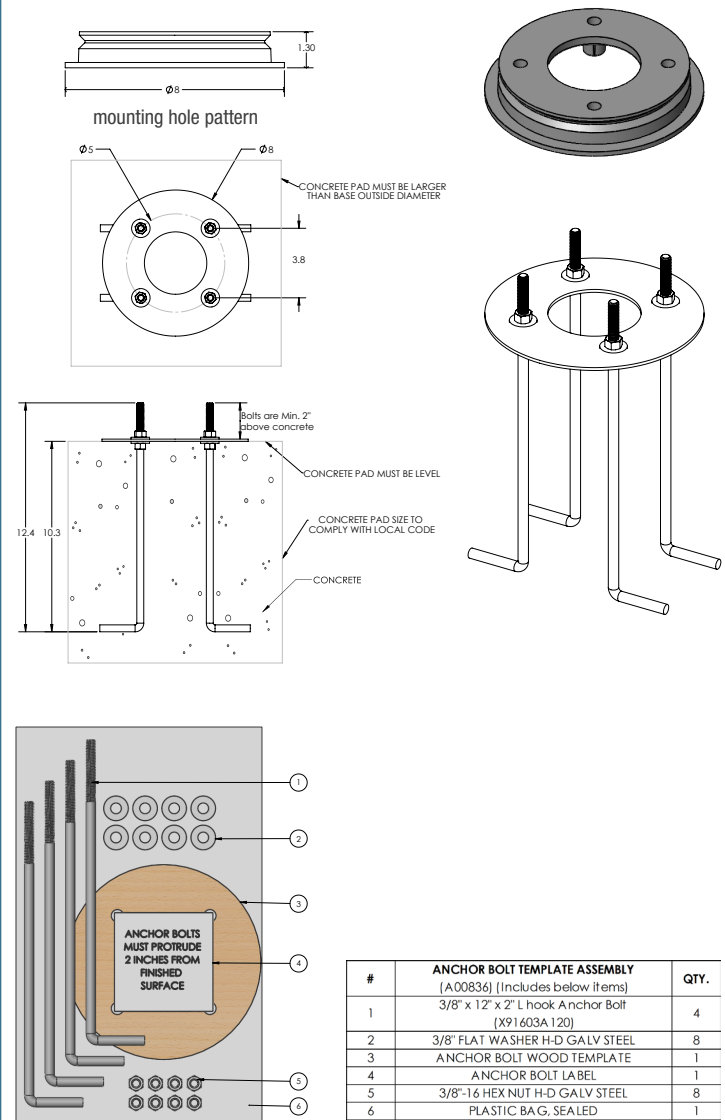
Mounting Plate Diameter

 $\phi 8"$

Anchor Bolt Template Assembly

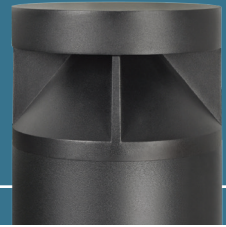
A00836

(Includes the below items listed)

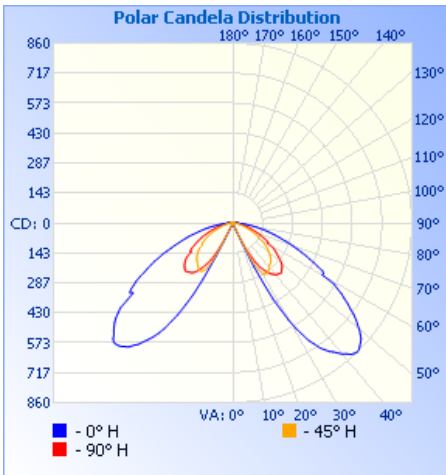


Due to continuous development and improvements, specifications are subject to change without notice.
Product use certifies agreement to FC Lighting terms and conditions.

Photometry



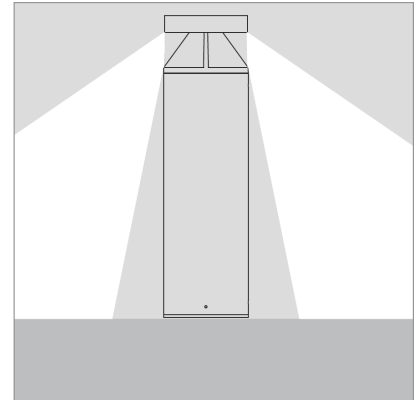
OPTICAL DISTRIBUTION



Illuminance at a Distance

	Center Beam fc	Beam Width
1.7ft	0.14 fc	1.1 ft 0.2 ft
3.3ft	0.04 fc	2.1 ft 0.4 ft
5.0ft	0.02 fc	3.2 ft 0.6 ft
6.7ft	0.01 fc	4.3 ft 0.8 ft
8.3ft	0.01 fc	5.4 ft 1.0 ft
10.0ft	0.00 fc	6.4 ft 1.2 ft

■ Vert. Spread: 35.7°
■ Horiz. Spread: 6.9°



Due to continuous development and improvements, specifications are subject to change without notice.
Product use certifies agreement to FC Lighting terms and conditions.