

## FCD7001



Date:

Type:

Fixture:

Project:

Approved:

**FCD7001** Linear Inground 36 inch Uplight with 316 Stainless Steel Trim with aluminum well housing included is IP67 rated for exterior use where inground applications are required.



### SPECIFICATIONS

#### PHYSICAL

<b>beam spread</b>	Spot-10°   Narrow Flood-25°   Flood-40°   Wide Flood-120°   Asymmetric-21° x 56°
<b>dimensions</b>	fixture: 4.75"W x 3.6"D x 37"L mounting sleeve: 4.3"W x 9.5"D x 36.4"L
<b>weight</b>	20 lbs
<b>housing</b>	marine grade, corrosion resistant, high pressure aluminum (includes mounting sleeve)
<b>lens</b>	1KO impact compliant, 3/8" thick clear tempered, standard. Optional: SR = Slip Resistance, etched lens on outer surface
<b>mounting</b>	concrete pour installation (mounting sleeve included) - drainage required (Improperly installed fixtures will void warranty)
<b>ingress protection</b>	neoprene continuous closed cell gasket to seal out contaminants, dry, damp or wet locations IP67 rated
<b>finish</b>	316 machined stainless steel faceplate

#### PERFORMANCE

<b>color temperature</b>	2700K	3000K	3500K	4000K	
<b>lumen output</b>	2400 lm				
<b>lifetime</b>	> 70,000 hours / L90 or better				
<b>color consistency</b>	2 SDCM / standard: 84CRI   optional: 90CRI				
<b>operating temperature</b>	max 143°F (62C)				
<b>warranty</b>	5 year limited warranty (refer to website for details)				

#### ELECTRICAL

<b>input voltage</b>	Universal 120–277V AC
<b>power supply</b>	Integral Class II, electronic, high power factor > 94% @120V
<b>certifications</b>	ETL / cETL Listed, CEC Title 24 JA8 compliant (only 90CRI complies)
<b>standards</b>	UL 1598 / CSA C22.2 No. 250.0 - Class I / IES LM-79 / LM-80
<b>power consumption</b>	32W @ 120V - 277V
<b>dimming interface</b>	standard: 0-10V (10%) optional: ELV (120V only)

Due to continuous development and improvements, specifications are subject to change without notice. FC Lighting reserves the right to change lab test details or specifications without notice. Product use certifies agreement to FC Lighting terms and conditions. FCC Series Cylinder Lights are engineered and produced in our Illinois manufacturing facility.

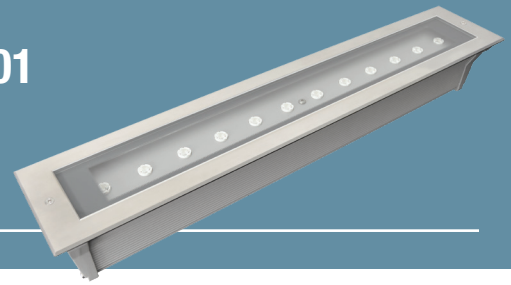


US Commercial Lighting Manufacturer Since 1982

**Specification Sheet**

# FCD7001

## Ordering Information



### ORDERING INFORMATION

FCD7001				24L	SS		
SERIES	VOLTAGE	CCT	CRI	LUMENS	FINISH	OPTICS	OPTIONS
<b>FCD7001</b> (3 ft)	<b>UNV</b> UNV 120V-277V	<b>27K</b> 2700K	<b>CRI84</b> 84 CRI	<b>24L</b> 2400 lm (32W)	<b>SS</b> Stainless Steel	<b>SP</b> Spot 10°	<b>LD</b> LED Dimming (0-10V) standard
	<b>120V</b> 120V AC (integral)	<b>3K</b> 3000K	<b>CRI90</b> 90 CRI			<b>NFL</b> Narrow Flood 25°	<b>ELV</b> ELV Dimming (120 only)
	<b>277V</b> 277V* AC (integral)	<b>35K</b> 3500K				<b>FL</b> Flood 40°	<b>LVR</b> Louver
		<b>4K</b> 4000K				<b>AYM</b> Asymmetrical 21°x 56°	<b>WL</b> Opal Lens ( <i>Asymmetrical N/A</i> )
						<b>WFL</b> Wide Flood 120°	<b>SR</b> Slip Resistant (Frosted Lens)

### REMOTE DRIVER & BATTERY BACKUP

FCD7001R	UNV			24L	SS		
SERIES	VOLTAGE	CCT	CRI	LUMENS	FINISH	OPTICS	OPTIONS
<b>FCD7001R</b> <sup>†</sup> (3 ft)	<b>UNV</b> 120V-277 Volts	<b>27K</b> 2700K	<b>CRI84</b> 84 CRI	<b>24L</b> 2400 lm (32W)	<b>SS</b> Stainless Steel	<b>SP</b> Spot 10°	<b>LD</b> LED Dimming (0-10V) standard
		<b>3K</b> 3000K	<b>CRI90</b> 90 CRI			<b>NFL</b> Narrow Flood 25°	<b>ELV</b> ELV Dimming (120 only)
		<b>35K</b> 3500K				<b>FL</b> Flood 40°	<b>LVR</b> Louver
		<b>4K</b> 4000K				<b>AYM</b> Asymmetrical 21°x 56°	<b>WL</b> Opal Lens ( <i>Asymmetrical N/A</i> )
						<b>WFL</b> Wide Flood 120°	<b>SR</b> Slip Resistant (Frosted Lens)

<sup>†</sup> LED DRIVER REMOTE (INDOOR) IP20, IK08, NEMA 1, -20°C to +50°C, 30' MAX Distance with 12AWG.

\* Consult factory for outdoor remote driver only.

**BBUR**<sup>1</sup> Battery Backup Remote (Indoor)

**BBUX**<sup>2</sup> Battery Backup Remote (Outdoor)

**N/A** Leave Blank for Remote Driver Only (without Battery Backup)

<sup>1</sup> Battery Back-up & LED Driver Remote (INDOOR), IP20, IK08, NEMA 1, 0°C to +48°C, 30' MAX Distance with 12AWG (w/UNV Option Only)

<sup>2</sup> Battery Back-up & LED Driver Remote (OUTDOOR), IP67, IK10, NEMA 4X, -20°C to +55°C, 30' MAX Distance with 12AWG (w/UNV Option Only)

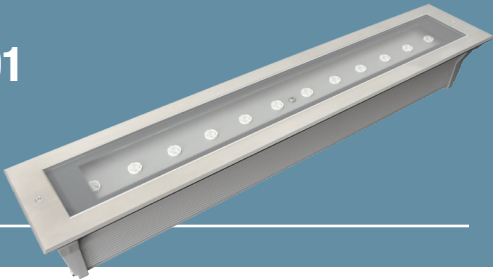
Due to continuous development and improvements, specifications are subject to change without notice. FC Lighting reserves the right to change lab test details or specifications without notice. Product use certifies agreement to FC Lighting terms and conditions. FCC Series Cylinder Lights are engineered and produced in our Illinois manufacturing facility.

 US Commercial Lighting Manufacturer Since 1982

© FC Lighting 3609 Swenson Ave. • St. Charles, IL • 60174 | fcighting.com | 800.900.1730

Specification Sheet

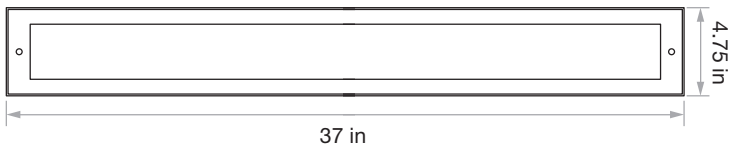
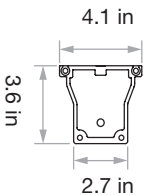
AG-DM-010423



# Dimensions

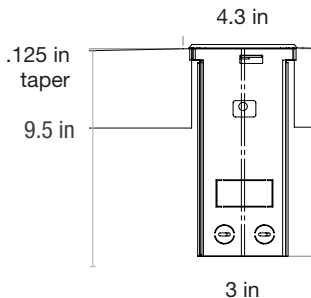
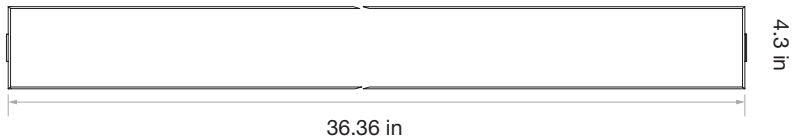
## PRODUCT DIMENSIONS - STANDARD PRODUCT

width	4.75" W
depth	3.6" D
length	37" L



## MOUNTING - mounting sleeve included, one per fixture

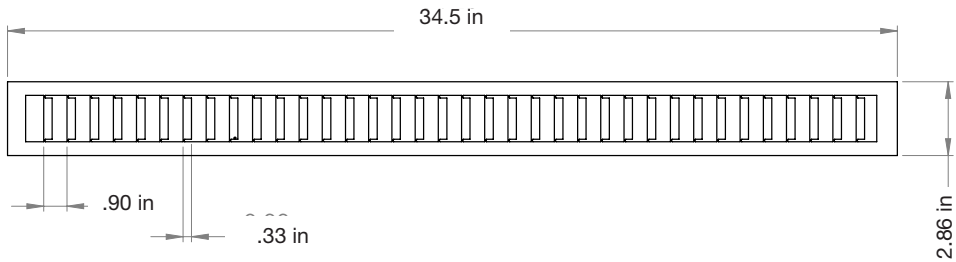
mounting sleeve width	4.3" W
mounting sleeve length	36.36" L
well housing depth	9.5" D



## ACCESSORIES

LVR - louver	inside housing
--------------	----------------

factory installation required



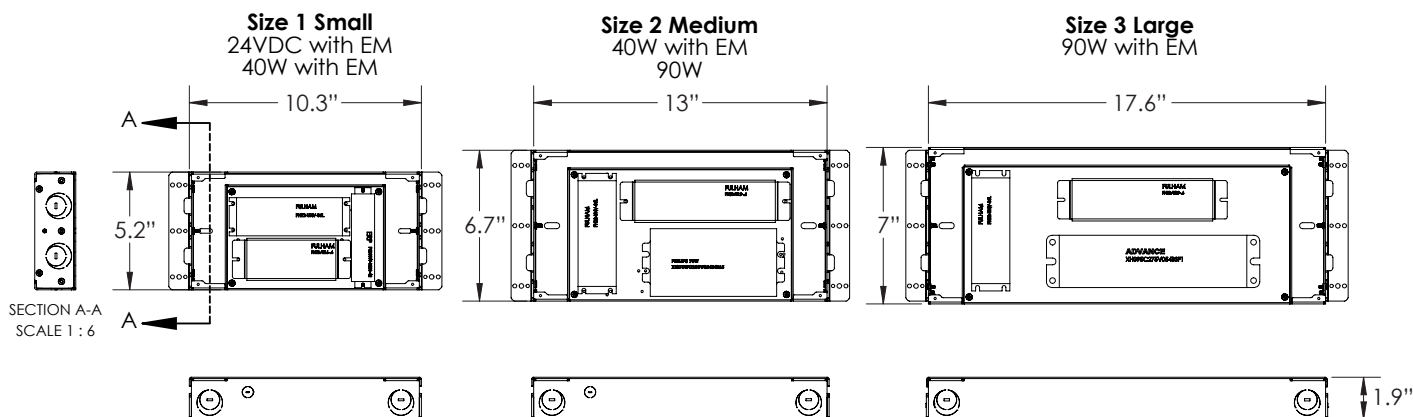
Due to continuous development and improvements, specifications are subject to change without notice. FC Lighting reserves the right to change lab test details or specifications without notice. Product use certifies agreement to FC Lighting terms and conditions. FCC Series Cylinder Lights are engineered and produced in our Illinois manufacturing facility.



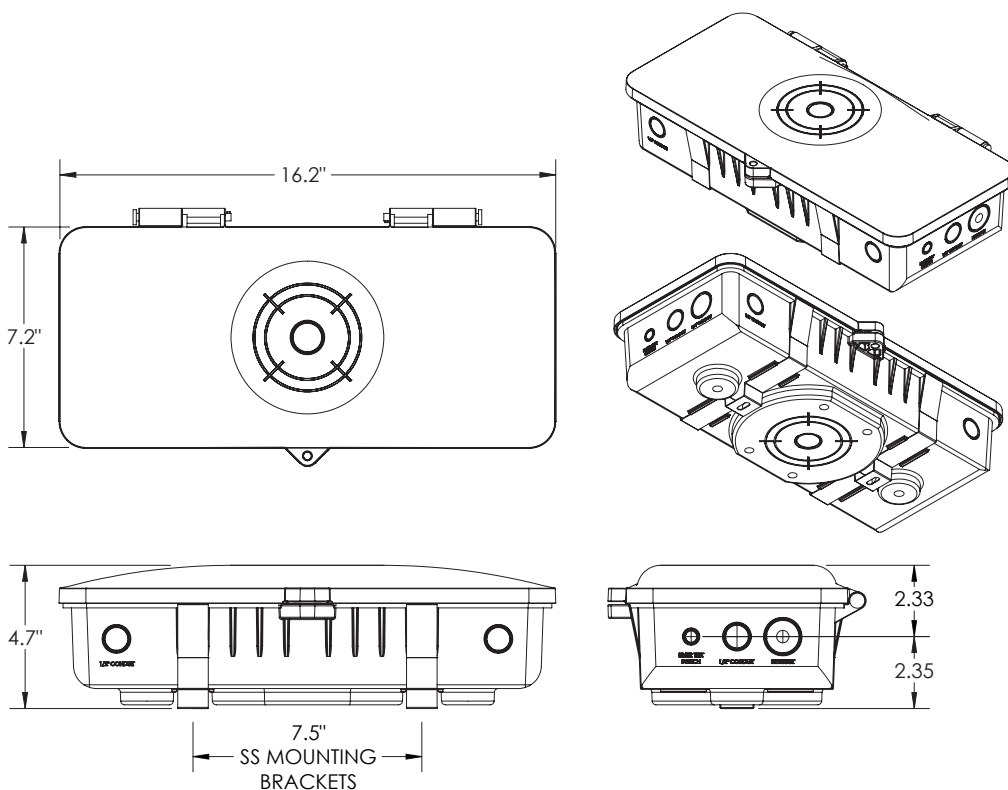
US Commercial Lighting Manufacturer Since 1982

## BATTERY BACK-UPS

**BBUR - BATTERY BACK-UP & LED DRIVER REMOTE (INDOOR), IP20, IK08, NEMA 1, 0°C to +48°C, 30' MAX Distance with 12AWG (w/UNV Option Only)**



**BBUX - BATTERY BACK-UP & LED DRIVER REMOTE (OUTDOOR), IP67, IK10, NEMA 4X, -20°C to +55°C, 30' MAX Distance with 12AWG (w/UNV Option Only)**



Due to continuous development and improvements, specifications are subject to change without notice. FC Lighting reserves the right to change lab test details or specifications without notice. Product use certifies agreement to FC Lighting terms and conditions. FCC Series Cylinder Lights are engineered and produced in our Illinois manufacturing facility.



US Commercial Lighting Manufacturer Since 1982

**Specification Sheet**