

FCD7002



Date:	Approved:
Type:	
Fixture:	
Project:	

FCD7002 Linear Inground 48 inch Uplight with 316 Stainless Steel Trim with aluminum well housing included is IP67 rated for exterior use where inground applications are required.

SPECIFICATIONS

PHYSICAL

beam spread	Spot-10° Narrow Flood-25° Flood-40° Wide Flood-120° Asymmetric-21° x 56°
lengths/dimensions	fixture: 4.75"W x 3.6"D x 48.8"L mounting sleeve: 4.3"W x 9.5"D x 48"L
weight	20 lbs
housing	marine grade, corrosion resistant, high pressure aluminum (includes mounting sleeve)
lens	1KO impact compliant, 3/8" thick clear tempered, standard. Optional: SR = Slip Resistance, etched outer surface
mounting	concrete pour installation (mounting sleeve included) - drainage required (Improperly installed fixtures will void warranty)
ingress protection	neoprene continuous closed cell gasket to seal out contaminants, dry, damp or wet locations IP67 rated
finish	316 machined stainless steel faceplate

PERFORMANCE

color temperature	2700K	3000K	3500K	4000K	
lumen output	4000 lm				
lifetime	> 70,000 hours / L90 or better				
color consistency	2 SDCM / 84CRI optional: 90CRI				
operating temperature	-13°F to 104°F (-25°C to 40°C)				
warranty	5 year limited warranty (refer to website for details)				

ELECTRICAL

input voltage	Universal 120-277V AC
power supply	integral Class II, electronic high-power factor > 94% @120V
certifications	ETL / cETL Listed, CEC Title 24 JA8 compliant (only 90CRI complies)
standards	UL 1598 / CSA C22.2 No. 250.0 - Class I / IES LM-79 / LM-80
power consumption	31W @ 120V 40W @ 120V
dimming interface	standard: 0-10V (10%) optional: ELV (120V only)

Due to continuous development and improvements, specifications are subject to change without notice. FC Lighting reserves the right to change lab test details or specifications without notice. Product use certifies agreement to FC Lighting terms and conditions. FCC Series Cylinder Lights are engineered and produced in our Illinois manufacturing facility.

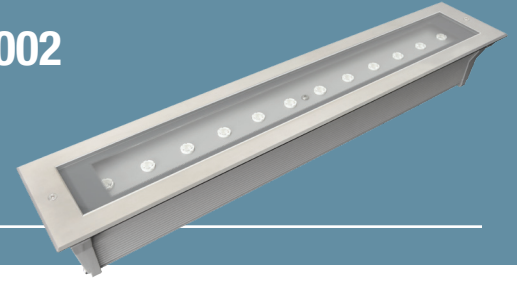


US Commercial Lighting Manufacturer Since 1982

Specification Sheet

FCD7002

Ordering Information



ORDERING INFORMATION

FCD7002						SS								
SERIES	VOLTAGE	CCT	CRI	LUMENS	FINISH	OPTICS	OPTIONS							
FCD7002 (4 ft)	UNV	UNV 120V-277V	27K	2700K	CRI84	84 CRI	30L	3080 lm (31W)	SS	Stainless Steel	SP	Spot 10°	LD	LED Dimming (0-10V) standard
	120V	120V AC (integral)	3K	3000K	CRI90	90 CRI	40L	4000 lm (40W)			NFL	Narrow Flood 25°	ELV	ELV Dimming (120 only)
	277V	277V* AC (integral)	35K	3500K							FL	Flood 40°	LVR	Louver
			4K	4000K							AYM	Asymmetrical 21°x 56°	WL	Opal Lens (Asymmetrical N/A)
											WFL	Wide Flood 120°	SR	Slip Resistant (Frosted Lens)

REMOTE DRIVER & BATTERY BACKUP

FCD7002R				UNV								SS									
Series		Voltage		CCT		CRI		LUMENS		Finish		Optics		Options							
FCD7002R [†] (4 ft)		UNV	120V-277 Volts	27K	2700K	CRI84	84 CRI	30L	3080 lm (31W)	SS	Stainless Steel	SP	Spot 10°	LD LED Dimming (0-10V) standard							
				3K	3000K	CRI90	90 CRI	40L	4000 lm (40W)			NFL	Narrow Flood 25°	ELV ELV Dimming (120 only)							
				35K	3500K							FL	Flood 40°	LVR Louver							
				4K	4000K							AYM	Asymmetrical 21°x 56°	WL Opal Lens (Asymmetrical N/A)							
														WFL	Wide Flood 120°	SR Slip Resistant (Frosted Lens)					
														BBUR ¹ Battery Backup Remote (Indoor)							
														BBUX ² Battery Backup Remote (Outdoor)							
														N/A Leave Blank for Remote Driver Only (without Battery Backup)							

[†] LED DRIVER REMOTE (INDOOR) IP20, IK08, NEMA 1, -20°C to +50°C, 30' MAX Distance with 12AWG.

*Consult factory for outdoor remote driver only.

[†] LED DRIVER REMOTE (INDOOR) IP20, IK08, NEMA 1, -20°C to +50°C, 30' MAX Distance with 12AWG.

* Consult factory for outdoor remote driver only.

¹ Battery Back-up & LED Driver Remote (INDOOR), IP20, IK08, NEMA 1, 0°C to +48°C, 30' MAX Distance with 12AWG (w/UNV Option Only)

² Battery Back-up & LED Driver Remote (OUTDOOR), IP67, IK10, NEMA 4X, -20°C to +55°C, 30' MAX Distance with 12AWG (w/UNV Option Only)

Due to continuous development and improvements, specifications are subject to change without notice. FC Lighting reserves the right to change lab test details or specifications without notice. Product use certifies agreement to FC Lighting terms and conditions. FCC Series Cylinder Lights are engineered and produced in our Illinois manufacturing facility.

 US Commercial Lighting Manufacturer Since 1982

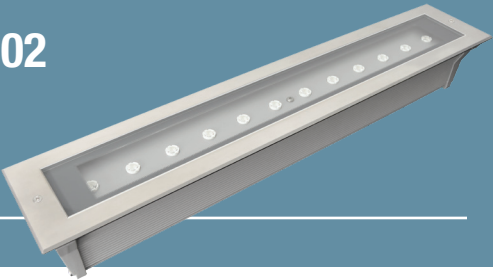
Specification Sheet

© FC Lighting 3609 Swenson Ave. • St. Charles, IL • 60174 | fcighting.com | 800.900.1730

HB-DM-022023

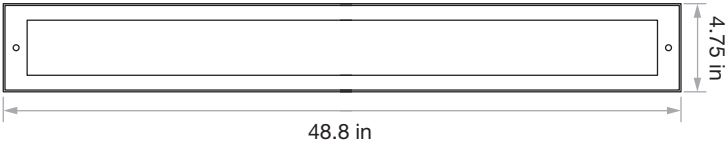
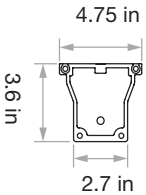
FCD7002

Dimensions



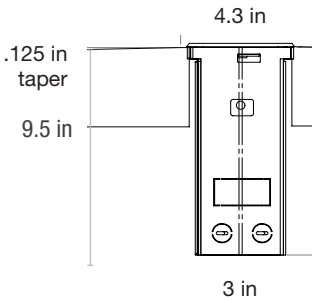
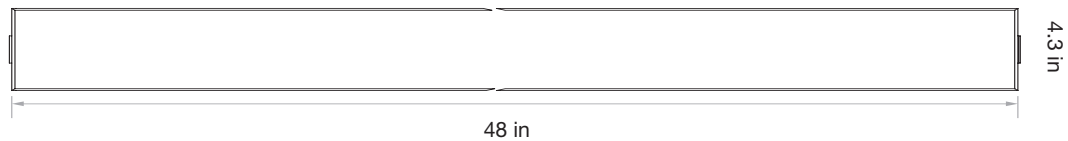
PRODUCT DIMENSIONS - STANDARD PRODUCT

width	4.75" W
depth	3.6" D
length	48.8" L



MOUNTING - mounting sleeve included, one per fixture

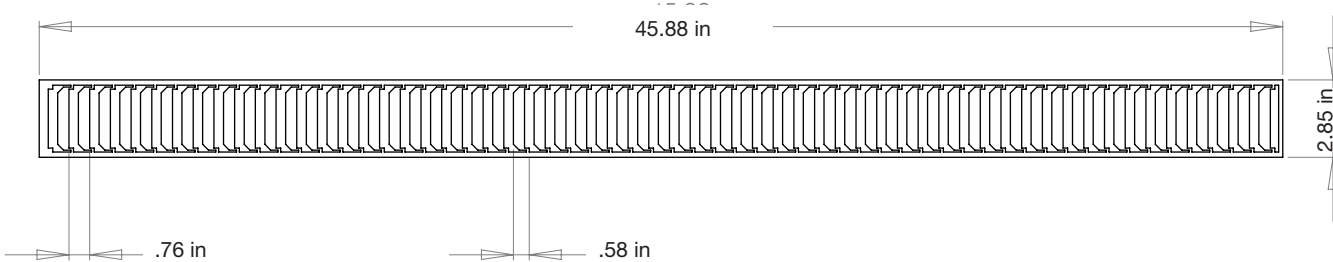
mounting sleeve width	4.3" W
mounting sleeve length	48" L
well housing depth	9.5" D



ACCESSORIES

LVR - louver	inside housing
--------------	----------------

factory installation required



Due to continuous development and improvements, specifications are subject to change without notice. FC Lighting reserves the right to change lab test details or specifications without notice. Product use certifies agreement to FC Lighting terms and conditions. FCC Series Cylinder Lights are engineered and produced in our Illinois manufacturing facility.

 US Commercial Lighting Manufacturer Since 1982

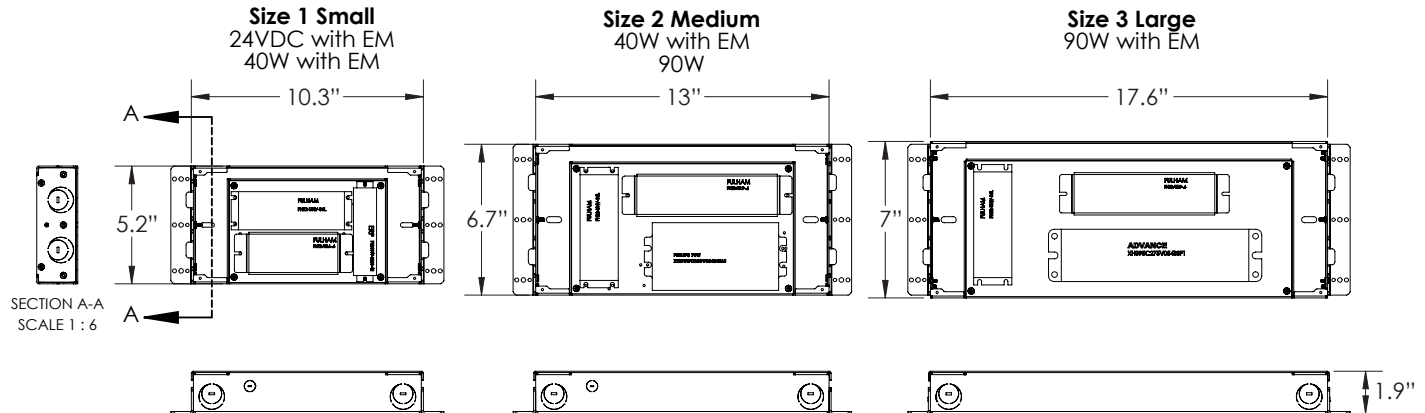
© FC Lighting 3609 Swenson Ave. • St. Charles, IL • 60174 | fcighting.com | 800.900.1730

Specification Sheet

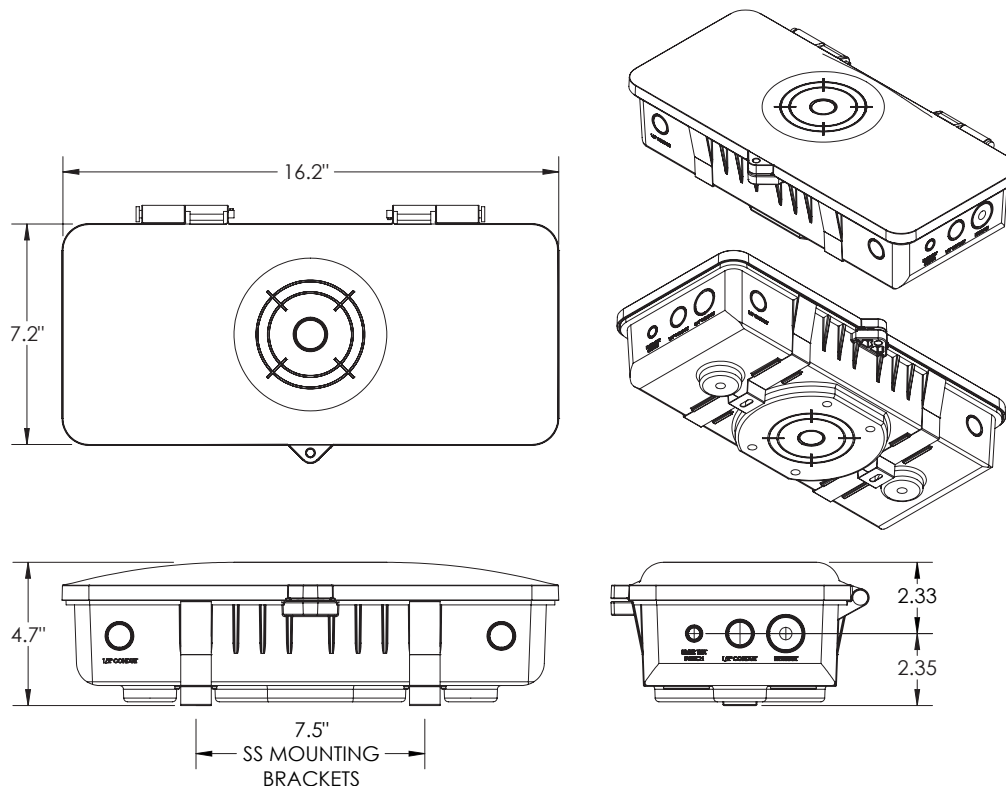
HB-DM-022023

BATTERY BACK-UPS

BBUR - BATTERY BACK-UP & LED DRIVER REMOTE (INDOOR), IP20, IK08, NEMA 1, 0°C to +48°C, 30' MAX Distance with 12AWG (w/UNV Option Only)



BBUX - BATTERY BACK-UP & LED DRIVER REMOTE (OUTDOOR), IP67, IK10, NEMA 4X, -20°C to +55°C, 30' MAX Distance with 12AWG (w/UNV Option Only)



Due to continuous development and improvements, specifications are subject to change without notice. FC Lighting reserves the right to change lab test details or specifications without notice. Product use certifies agreement to FC Lighting terms and conditions. FCC Series Cylinder Lights are engineered and produced in our Illinois manufacturing facility.

 US Commercial Lighting Manufacturer Since 1982

Specification Sheet