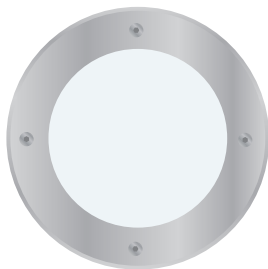


FCD803R



Date:

Type:

Fixture:

Project:

Approved:

FCD803R 8 inch round inground recessed fixture with stainless steel faceplate is IP67 rated for exterior use where inground applications are required.



SPECIFICATIONS

PHYSICAL

beam spread	LED optics: Spot-10° Narrow Flood-25° Flood-50° Wide Flood-70° (<i>image-free white lens</i>) optional: +/- 30° adjustable LED base
dimensions	fixture: 8.8" Ø x 11.0" D PVC housing: 8.4"Ø x 11.0" D
weight	9.25 lbs
housing	marine grade, corrosion resistant, high pressure aluminum (includes mounting sleeve)
lens	3/8" thick clear tempered, standard. optional: SR = Slip Resistance, etched lens on outer surface
mounting	concrete pour installation (mounting sleeve included) - drainage required (Improperly installed fixtures will void warranty)
ingress protection	IP67 : dry, damp or wet locations with neoprene continuous closed cell gasket to seal out contaminants
finish	316 machined stainless steel faceplate

PERFORMANCE

color temperature	2700K	3000K	3500K	4000K	
lumen output	1300 lm	2000 lm	3000 lm		
lifetime	> 70,000 hours / L90 or better				
color consistency	2 SDCM / standard: 84CRI optional: 90CRI				
operating temperature	max 143°F (62C)				
warranty	5 year limited warranty (refer to website for details)				

ELECTRICAL

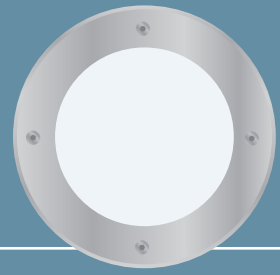
input voltage	Universal 120–277V AC
power supply	Integral Class II, electronic, high power factor > 94% @120V
certifications	ETL/cETL Listed, CEC Title 24 JA8 compliant (only 90CRI complies)
standards	UL1598/CSA C22.2 No. 250.0; UI 8750/CSA C22.2 No. 250.13/IES LM-79/LM-80
power consumption	33W @ 120V - 277V (maximum)
dimming interface	standard: 0-10V (10%) optional: ELV (120V only)

Due to continuous development and improvements, specifications are subject to change without notice. FC Lighting reserves the right to change lab test details or specifications without notice. Product use certifies agreement to FC Lighting terms and conditions. FCC Series Cylinder Lights are engineered and produced in our Illinois manufacturing facility.



US Commercial Lighting Manufacturer Since 1982

Specification Sheet



Ordering Information

ORDERING INFORMATION

FCD803R	UNV				SS		
SERIES	VOLTAGE	CCT	CRI	LUMENS	FINISH	LED OPTICS	OPTIONS
FCD803R	UNV 120V-277V	27K 2700K	CRI84 84 CRI	13L 1300 lm (26W)	SS Stainless Steel	SP Spot (10°)	LD 0-10V Dimming (10%)
		3K 3000K	CRI90 90 CRI	20L 2000 lm (30W)		NFL Narrow Flood (25°)	ELV ELV Dimming (120V only)
		35K 3500K		30L 3000 lm (33W)		FL Flood (50°)	SR Slip Resistant (Frosted Lens)
		4K 4000K				WFL Wide Flood (70°)	LVR Louver (internal)
						WFL image-free white lens	RG Rock Guard (not drive over rated)
							ADJ Adjustable LED Base (Not w/LVR or RG) (up to +/- 30° beam)

WFL image-free white lens

REMOTE DRIVER & BATTERY BACKUP

FCD803RR	UNV				SS		
SERIES	VOLTAGE	CCT	CRI	LUMENS	FINISH	LED OPTICS	OPTIONS
FCD803RR [†]	UNV 120V-277V	27K 2700K	CRI84 84 CRI	13L 1300 lm (26W)	SS Stainless Steel	SP Spot (10°)	LD 0-10V Dimming (10%)
		3K 3000K	CRI90 90 CRI	20L 2000 lm (30W)		NFL Narrow Flood (25°)	ELV ELV Dimming (120V only)
		35K 3500K		30L 3000 lm (33W)		FL Flood (50°)	SR Slip Resistant (Frosted Lens)
		4K 4000K				WFL Wide Flood (70°)	LVR Louver (internal)
						WFL image-free white lens	RG Rock Guard (not drive over rated)
							ADJ Adjustable LED Base (Not w/LVR or RG) (up to +/- 30° beam)
							BBUR ¹ Battery Backup Remote (Indoor)
							BBUX ² Battery Backup Remote (Outdoor)
							N/A Leave Blank for Remote Driver Only (without Battery Backup)

[†] LED DRIVER REMOTE (INDOOR) IP20, IK08, NEMA 1, -20°C to +50°C, 30' MAX Distance with 12AWG.

*Consult factory for outdoor remote driver only.

† LED DRIVER REMOTE (INDOOR) IP20, IK08, NEMA 1, -20°C to +50°C, 30' MAX Distance with 12AWG.

* Consult factory for outdoor remote driver only.

¹ Battery Back-up & LED Driver Remote (INDOOR), IP20, IK08, NEMA 1, 0°C to +48°C, 30' MAX Distance with 12AWG (w/UNV Option Only)

² Battery Back-up & LED Driver Remote (OUTDOOR), IP67, IK10, NEMA 4X, -20°C to +55°C, 30' MAX Distance with 12AWG (w/UNV Option Only)

Due to continuous development and improvements, specifications are subject to change without notice. FC Lighting reserves the right to change lab test details or specifications without notice. Product use certifies agreement to FC Lighting terms and conditions. FCC Series Cylinder Lights are engineered and produced in our Illinois manufacturing facility.



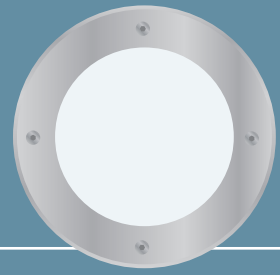
US Commercial Lighting Manufacturer Since 1982

© FC Lighting

3609 Swenson Ave. • St. Charles, IL • 60174 | fclighting.com | 800.900.1730

Specification Sheet

AG-DM-010423

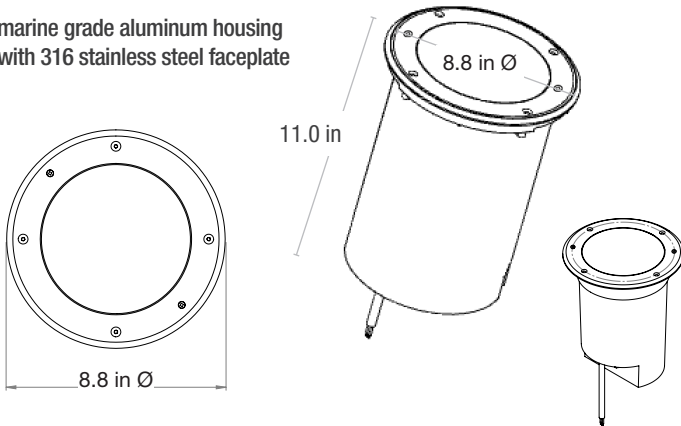


Dimensions

PRODUCT DIMENSIONS - STANDARD PRODUCT

width	outside diameter 8.8" Ø, inner diameter 7.8" Ø
depth	11.0" D

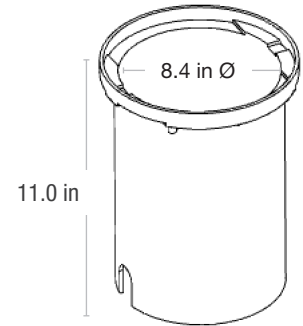
marine grade aluminum housing
with 316 stainless steel faceplate



MOUNTING - mounting sleeve included, one per fixture

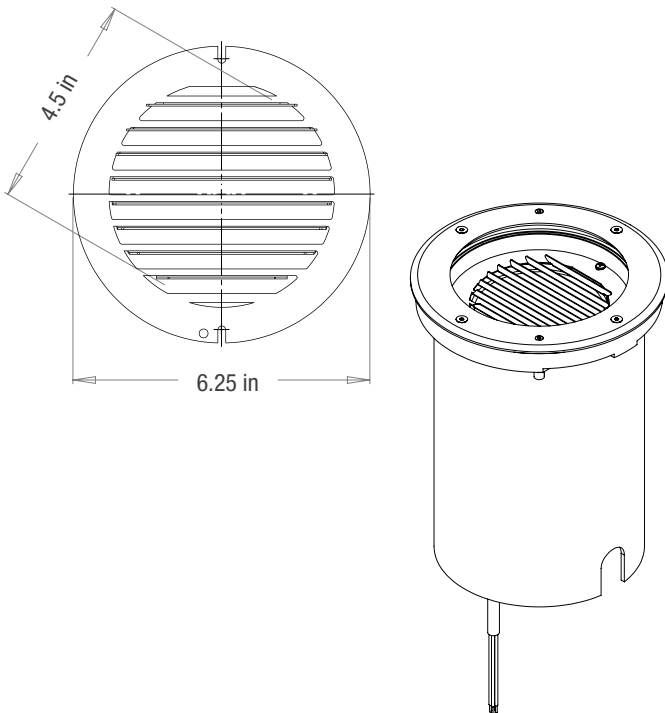
PVC housing	8.4" Ø
well housing depth	11.0" D

french drain
required
for proper
installation,
see installation
instructions

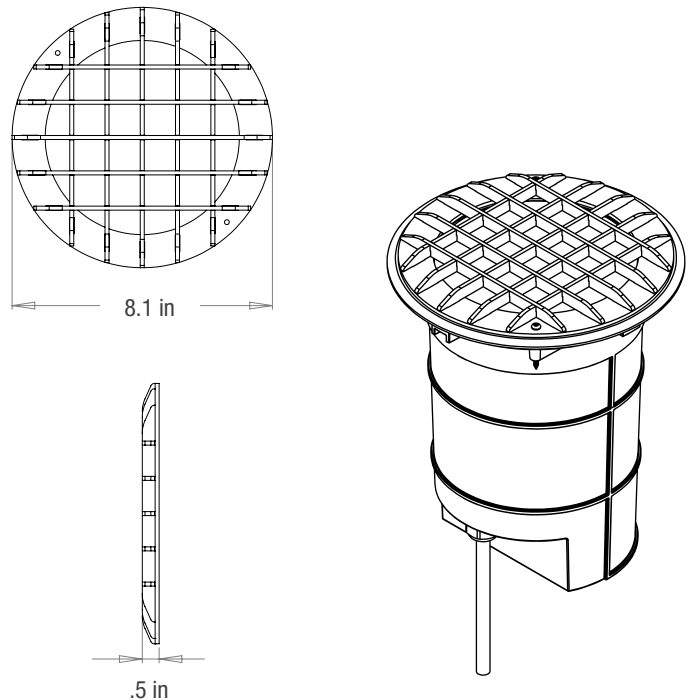


ACCESSORIES

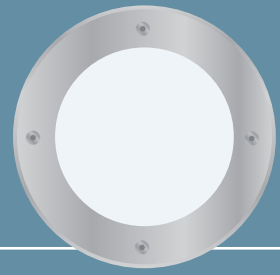
LVR - louver	inside housing
factory installation required	



RG - Rock Guard	8.1" Ø
add to fixture (above ground)	.5" D



Due to continuous development and improvements, specifications are subject to change without notice. FC Lighting reserves the right to change lab test details or specifications without notice. Product use certifies agreement to FC Lighting terms and conditions. FCC Series Cylinder Lights are engineered and produced in our Illinois manufacturing facility.

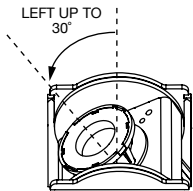


Accessories

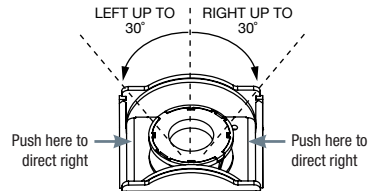
FCD803 ADJUSTABLE LED BASE

ADJUSTS TO $\pm 30^\circ$ BEAM ANGLE

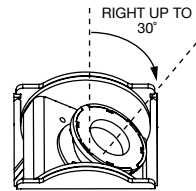
ADJUSTABLE OPTIC VIEW (ADJ):



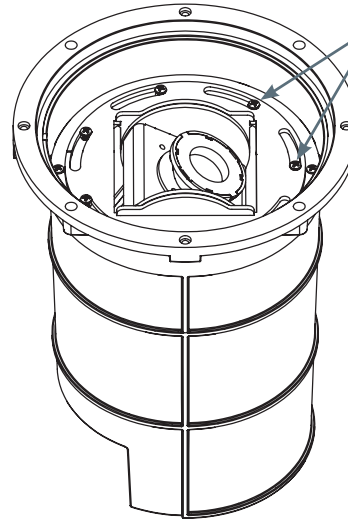
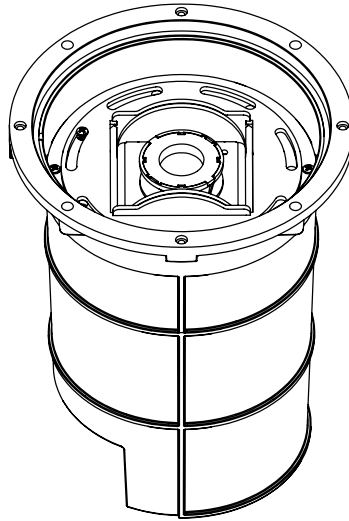
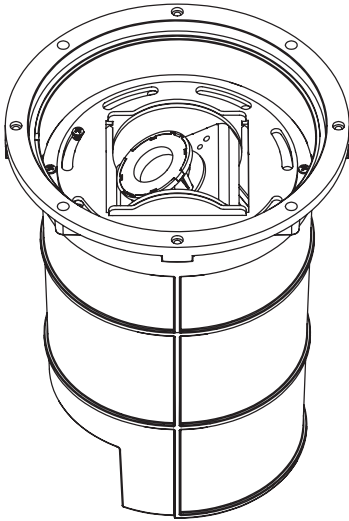
(OPTIC DIRECTED LEFT
UP TO 30°)



(OPTIC DIRECTED CENTERED
UP TO 30°)



(OPTIC DIRECTED RIGHT
UP TO 30°)



These screws can
be loosened and
tightened for additional
adjustments

Due to continuous development and improvements, specifications are subject to change without notice. FC Lighting reserves the right to change lab test details or specifications without notice. Product use certifies agreement to FC Lighting terms and conditions. FCC Series Cylinder Lights are engineered and produced in our Illinois manufacturing facility.

 US Commercial Lighting Manufacturer Since 1982

© FC Lighting

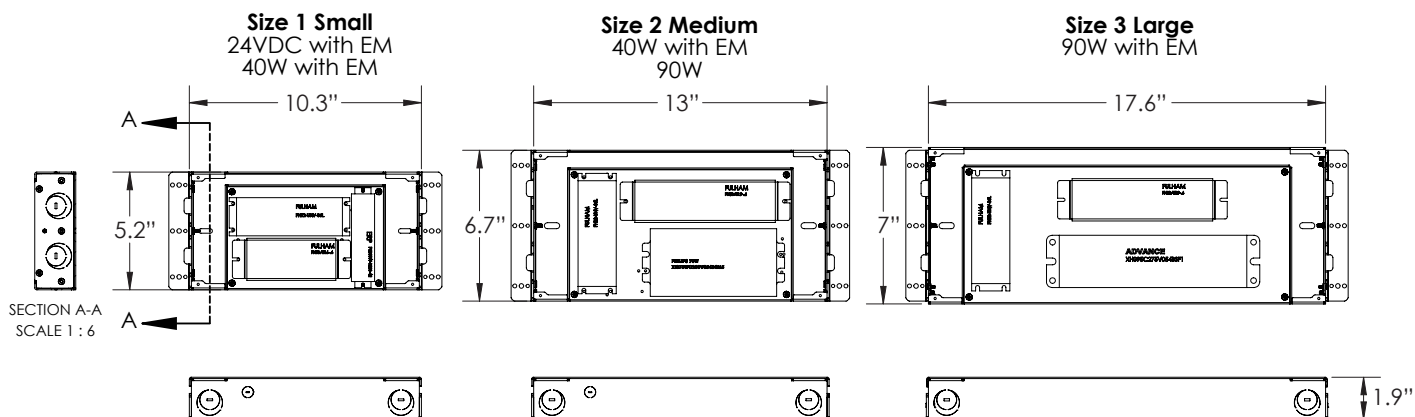
3609 Swenson Ave. • St. Charles, IL • 60174 | fclighting.com | 800.900.1730

Specification Sheet

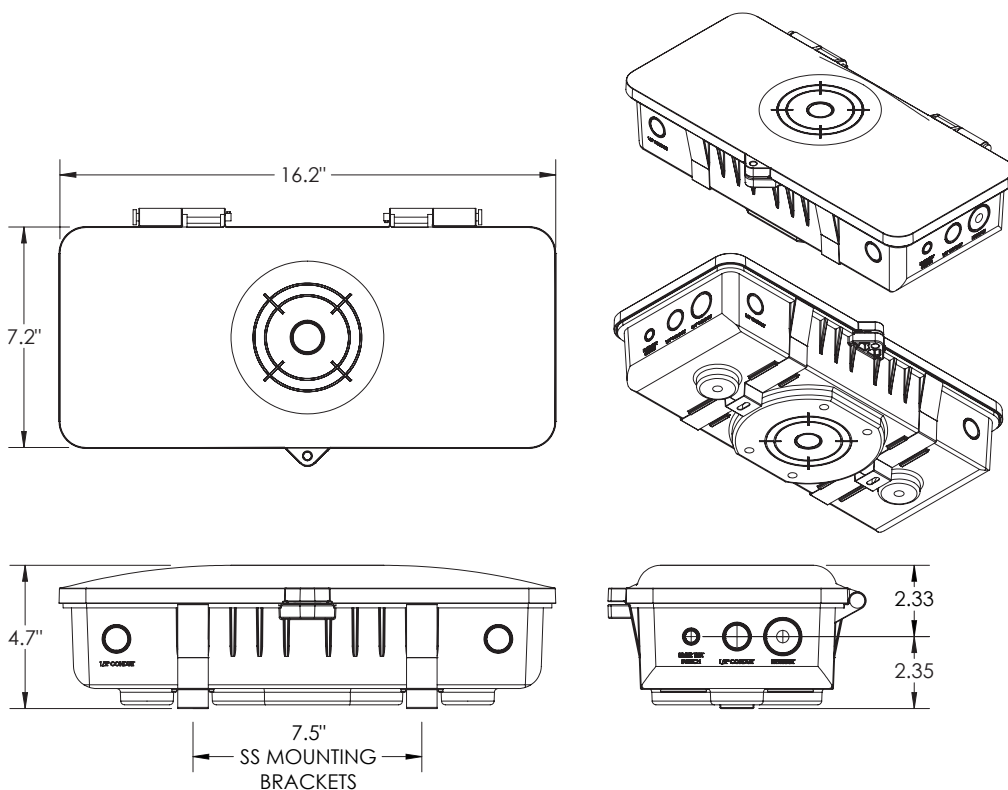
AG-DM-010423

BATTERY BACK-UPS

BBUR - BATTERY BACK-UP & LED DRIVER REMOTE (INDOOR), IP20, IK08, NEMA 1, 0°C to +48°C, 30' MAX Distance with 12AWG (w/UNV Option Only)



BBUX - BATTERY BACK-UP & LED DRIVER REMOTE (OUTDOOR), IP67, IK10, NEMA 4X, -20°C to +55°C, 30' MAX Distance with 12AWG (w/UNV Option Only)



Due to continuous development and improvements, specifications are subject to change without notice. FC Lighting reserves the right to change lab test details or specifications without notice. Product use certifies agreement to FC Lighting terms and conditions. FCC Series Cylinder Lights are engineered and produced in our Illinois manufacturing facility.