

## FCD910



Date:

Type:

Fixture:

Project:

Approved:

**FCD910** 10 inch round inground recessed luminaire with stainless steel faceplate and 316 stainless steel housing is IP67 rated for exterior use where inground applications are required.

### SPECIFICATIONS

#### PHYSICAL

<b>beam spread</b>	LED optics: Spot (10°), Narrow Flood (25°), Flood (50°), Wide Flood (70°; <i>image-free white lens</i> ) optional: +/- 30° adjustable LED base
<b>dimensions</b>	fixture: 10.2" Ø x 9.4" D, PVC housing: 9.6"Ø x 12.6" D
<b>weight</b>	10 lbs
<b>housing</b>	marine grade, 316 stainless steel housing & faceplate with captive, recessed stainless steel, tamper resistant hex socket screws
<b>lens</b>	3/8" thick clear tempered, standard, SR = Slip Resistance, etched lens on outer surface
<b>mounting</b>	concrete pour installation (mounting sleeve included) - drainage required (improperly installed luminaires will void warranty)
<b>ingress protection</b>	IP67 : dry, damp or wet locations with neoprene continuous closed cell urethane 'O' ring seal out contaminants
<b>finish</b>	316 brushed stainless steel faceplate

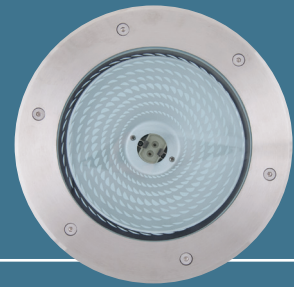
#### PERFORMANCE

<b>color temperature</b>	2700K, 3000K, 3500K, 4000K
<b>lumen output</b>	1200 lm
<b>lumen maintenance</b>	L70 >70,000 hours
<b>color consistency</b>	3 SDCM / CRI85, optional: CRI90
<b>operating temperature</b>	maximum 143°F (62°C)
<b>warranty</b>	5 year limited warranty

#### ELECTRICAL

<b>input voltage</b>	Universal 120 - 277 VAC
<b>power supply</b>	Integral Class II, electronic, high power factor > 94% @ 120V
<b>certifications</b>	ETL/cETL Listed
<b>standards</b>	UL1598/CSA C22.2 No. 250.0; UI 8750/CSA C22.2 No. 250.13/IES LM-79/LM-80
<b>power consumption</b>	13W @ 120 - 277 VAC
<b>dimming interface</b>	standard: 0-10V, optional: ELV (120V only)

Due to continuous development and improvements, specifications are subject to change without notice.  
Product use certifies agreement to FC Lighting terms and conditions.

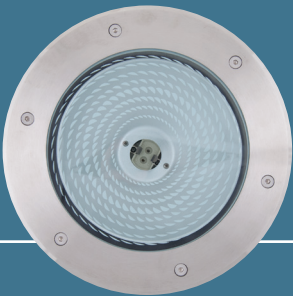


# Ordering Information

## ORDERING INFORMATION

FCD910	UNV			12L	SS		
SERIES	VOLTAGE	CCT	CRI	LUMENS	FINISH	LED OPTICS	OPTIONS
<b>FCD910</b>	<b>UNV</b> 120 - 277 VAC	<b>27K</b> 2700K <b>3K</b> 3000K <b>35K</b> 3500K <b>4K</b> 4000K	<b>CRI84</b> 84 CRI <b>CRI90</b> 90 CRI	<b>12L</b> 1200 lm (13W)	<b>SS</b> Stainless Steel	<b>SP</b> Spot (10°) <b>NFL</b> Narrow Flood (25°) <b>FL</b> Flood (50°) <b>WFL</b> Wide Flood (70°) <i>(WFL image-free white lens)</i>	<b>LD</b> 0-10V Dimming (Standard) <b>ELV</b> ELV Dimming (120V only) <b>SR</b> Slip Resistant (Frosted Lens) <b>LVR</b> Louver (Internal) <b>ADJ</b> Adjustable LED Base <i>(up to +/- 30° beam)</i>

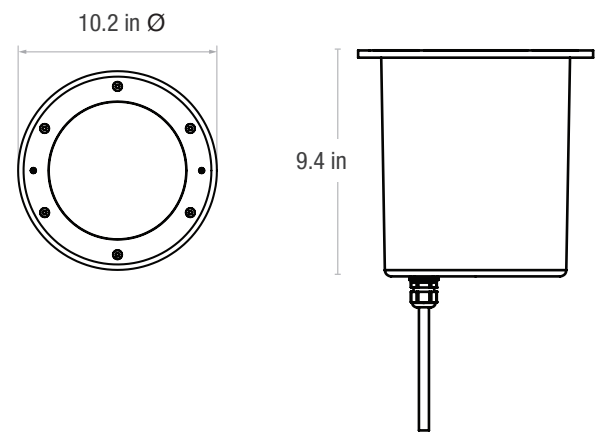
Due to continuous development and improvements, specifications are subject to change without notice.  
Product use certifies agreement to FC Lighting terms and conditions.



# Dimensions

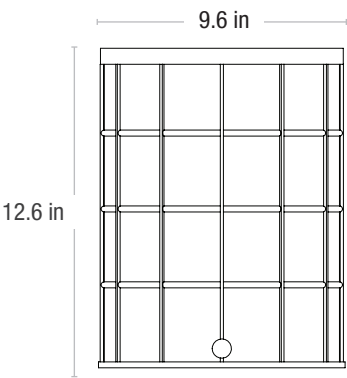
PRODUCT DIMENSIONS - STANDARD PRODUCT	
width	10.2" Ø
depth	9.4" D

deep drawn 316 stainless steel housing with  
316 stainless steel faceplate



MOUNTING - mounting sleeve included, one per fixture	
PVC housing	9.6" Ø
well housing depth	12.6" D

french drain  
required  
for proper  
installation,  
see installation  
instructions



Due to continuous development and improvements, specifications are subject to change without notice.  
Product use certifies agreement to FC Lighting terms and conditions.

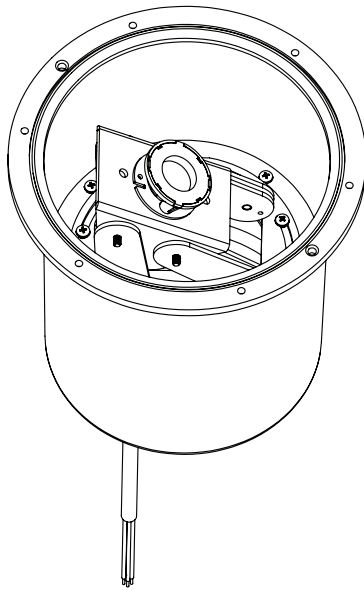


# Accessories

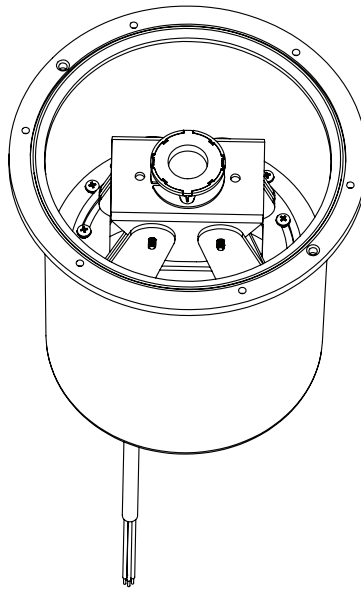
## FCD910 ADJUSTABLE LED BASE

ADJUSTS TO  $\pm 30^\circ$  BEAM ANGLE

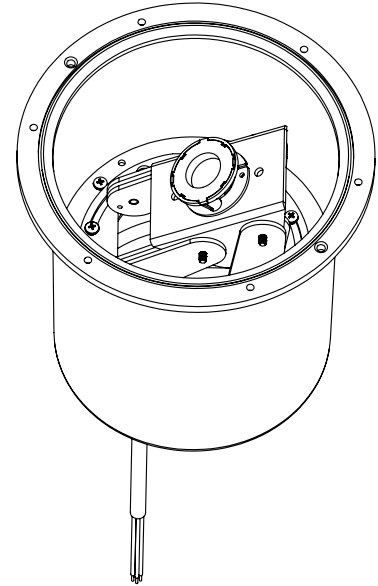
base tilts to  
adjust beam  
 $\pm 30^\circ$



ADJ shown inside housing



base tilts to  
adjust beam  
 $\pm 30^\circ$



Due to continuous development and improvements, specifications are subject to change without notice.  
Product use certifies agreement to FC Lighting terms and conditions.

 US Commercial Lighting Manufacturer Since 1982

**Specification Sheet**