

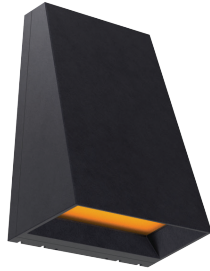
## FCW1084A



Wildlife Lighting Certified  
by the Florida Fish & Wildlife  
Conservation Commission



ADA



Date:

Type:

Luminaire:

Project:

Approved:

**FCW1084A** Wildlife friendly, exterior surface, trapezoidal wall-mounted luminaire with an amber LED. The wedge-shaped design has a timeless, simplistic style and functions well, allowing weather elements to run off the luminaire efficiently.

The FCW1084A is ADA-compliant, IP66-rated, and is available in a choice of housing colors. This small-footprint luminaire has multiple dimming protocol options (1%, 0-10V, TRIAC, or ELV) and is available with symmetrical and asymmetrical light patterns using Wildlife friendly LEDs.

Lighting applications include overhead entries, illuminating building features, hallways, and perimeters.

### SPECIFICATIONS

#### PHYSICAL

<b>dimensions</b>	5.6" W x 8.7" H x 4" D
<b>weight</b>	5 lbs
<b>housing</b>	Marine grade, corrosion resistant, cast aluminum
<b>lens</b>	0.225 inch thick tempered glass with frosted, diffused finish
<b>mounting</b>	Mounts directly to standard junction box
<b>ingress protection</b>	IP66: dry, damp or wet locations with extruded silicone gasket to seal out contaminants (down position only)
<b>finish</b>	Available in Black, Bronze, Graphite Grey, Silver, White and Custom Colors. Six stage chemical iron phosphate conversion pre-treatment. Polyester powder coat finish, 18 µm Minutes, 5,000 hours salt spray test (ASTM B117) compliant with Florida / AAMA 2604 specification.

#### PERFORMANCE

<b>color temperature</b>	Amber — wildlife friendly (590-600 nanometer light wavelength)
<b>lumen output</b>	140 lm (Asymmetrical <b>ASY</b> ), 228 lm (Symmetrical <b>SYM</b> )
<b>lumen maintenance</b>	L70 >70,000 hours
<b>color consistency</b>	Amber (590-600nm)
<b>operating temperature</b>	-13 to 104 °F (-25 to 40 °C)
<b>warranty</b>	5-Year limited warranty

#### ELECTRICAL

<b>input voltage</b>	Universal 120 - 277 VAC
<b>power supply</b>	Integral
<b>certifications</b>	ETL, cETL Listed, ADA Compliant
<b>standards</b>	UL 1598, CSA C22.2 No. 250.0 - Class, IES LM-79 / LM-80
<b>power consumption</b>	18 W Maximum (228 lm or 140 lm)
<b>dimming</b>	<b>standard:</b> TD Tri-Dim (UNV Only), (1%, 0-10V, 120 - 277 VAC), (1%, TRIAC & ELV, 120 VAC Only), <b>optional:</b> PE (1%, 0-10V, 120 VAC or 277 VAC)



# Ordering Information

## PART NUMBER

MODEL	VOLTAGE	CCT	LUMENS	FINISH	OPTIC	OPTIONS
<b>FCW1084A</b>	<b>UNV</b> UNV 120 - 277 VAC <sup>1</sup>	<b>AMB</b> Amber	<b>SYMMETRICAL</b>	<b>BKE</b> Black	<b>SYM</b> Symmetrical	<b>PE</b> Photo Eye (120 VAC or 277 VAC) <sup>4</sup>
	<sup>1</sup> Tri-Dim (UNV Only) (1%, 0-10V, 120-277V), (1%, TRIAC & ELV, 120V Only)		<b>2L</b> 228 lm (18 W)	<b>BRE</b> Bronze	<b>ASY</b> Asymmetrical (Forward Throw)	<sup>4</sup> Select this option if you have selected either PE 120 or 277 voltage
			<b>ASYMMETRICAL</b>	<b>GRE</b> Graphite Grey		
<b>120</b>	120 VAC w/Photo Eye <sup>2</sup>		<b>1L</b> 140 lm (18 W)	<b>SLE</b> Silver		
	<sup>2</sup> PE (1%, 0-10V, 120 VAC)			<b>WHE</b> White		
<b>277</b>	277 VAC w/Photo Eye <sup>3</sup>			<b>CC</b> Custom Color		
	<sup>3</sup> PE (1%, 0-10V, 277 VAC)					

## REMOTE DRIVER & BATTERY BACKUP

MODEL	VOLTAGE	CCT	LUMENS	FINISH	OPTIC	OPTIONS
<b>FCW1084AR<sup>†</sup></b>	<b>UNV</b> UNV 120 - 277 VAC <sup>1</sup>	<b>AMB</b> Amber	<b>SYMMETRICAL</b>	<b>BKE</b> Black	<b>SYM</b> Symmetrical	<b>BBUR<sup>2</sup></b> Battery Backup Remote (Indoor)
	<sup>1</sup> Tri-Dim (UNV Only) (1%, 0-10V, 120-277V), (1%, TRIAC & ELV, 120V Only)		<b>2L</b> 228 lm (18 W)	<b>BRE</b> Bronze	<b>ASY</b> Asymmetrical (Forward Throw)	<b>BBUX<sup>3</sup></b> Battery Backup Remote (Outdoor)
			<b>ASYMMETRICAL</b>	<b>GRE</b> Graphite Grey		
			<b>1L</b> 140 lm (18 W)	<b>SLE</b> Silver		<b>N/A</b> Leave Blank for Remote Driver Only (without Battery Backup)
				<b>WHE</b> White		
				<b>CC</b> Custom Color		

<sup>†</sup> LED DRIVER REMOTE (INDOOR) IP20, IK08, NEMA 1, -20°C to +50°C, 30' MAX Distance with 12AWG.

\*Consult factory for outdoor remote driver only.

<sup>2</sup> Battery Back-up & LED Driver Remote (INDOOR), IP20, IK08, NEMA 1, 0°C to +48°C, 30' MAX Distance with 12AWG (w/UNV Option Only)

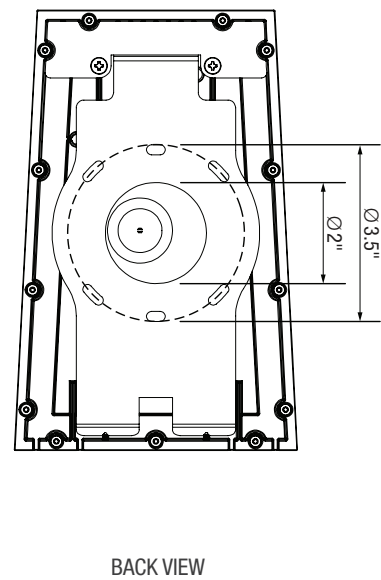
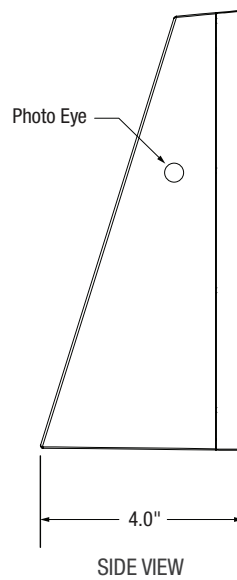
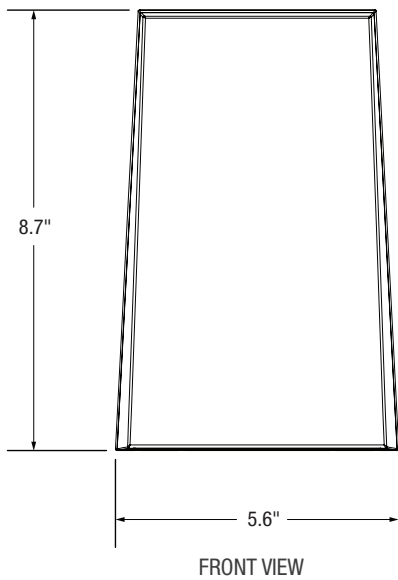
<sup>3</sup> Battery Back-up & LED Driver Remote (OUTDOOR), IP67, IK10, NEMA 4X, -20°C to +55°C, 30' MAX Distance with 12AWG (w/UNV Option Only)



# Dimensions

## PRODUCT DIMENSIONS - STANDARD PRODUCT

width	5.6" W
height	8.7" H
depth (bottom)	4" D

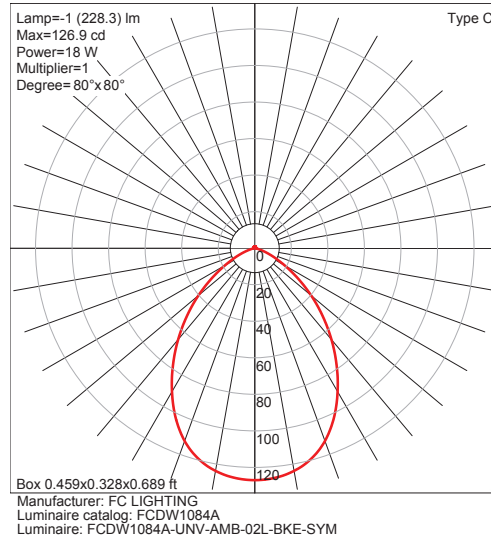


# Photometry

## OPTICAL DISTRIBUTION

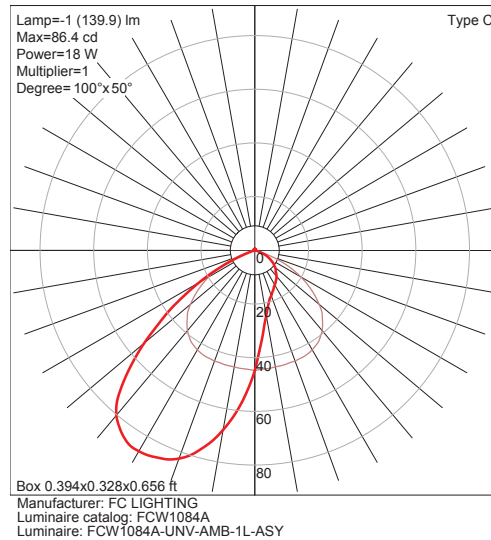
**SYM** Symmetrical distribution

Model	Watts	Amber
FCW1084A	18 W	228 lm



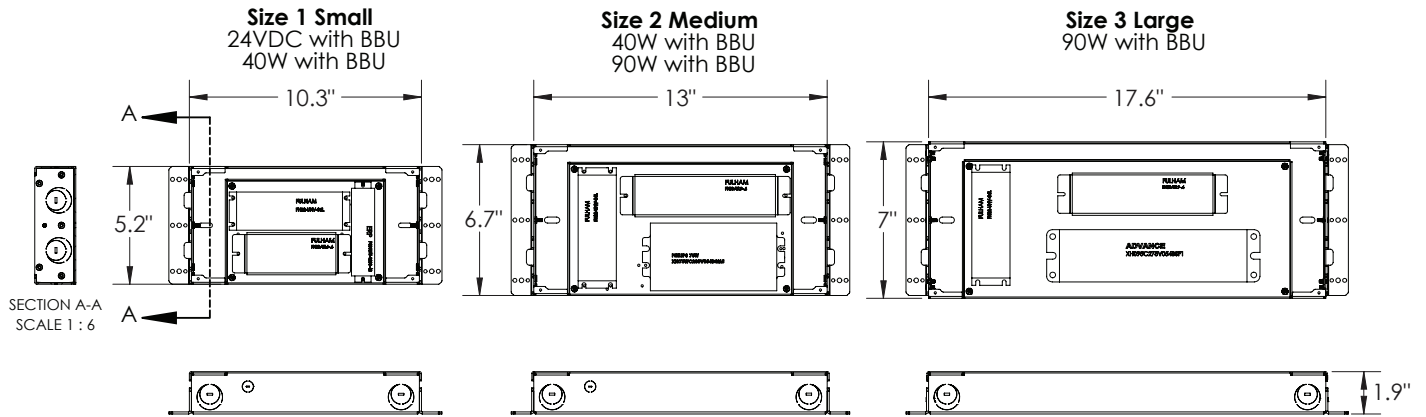
**ASY** Asymmetrical distribution

Model	Watts	Amber
FCW1084A	18 W	140 lm



## BATTERY BACK-UPS

**BBUR - BATTERY BACK-UP & LED DRIVER REMOTE (INDOOR), IP20, IK08, NEMA 1, 0°C to +48°C, 30' MAX Distance with 12AWG (w/UNV Option Only)**



**BBUX - BATTERY BACK-UP & LED DRIVER REMOTE (OUTDOOR), IP67, IK10, NEMA 4X, -20°C to +55°C, 30' MAX Distance with 12AWG (w/UNV Option Only)**

