

## FCW3260



Date:

Type:

Fixture:

Project:

Approved:

**FCW3260** Exterior Decor fixture is the largest die-cast aluminum 15 inch diamond faced fixture and is IP65 rated. This fixture is easy to install and has an impact resistant lens that provides ample lighting for a variety of ceiling, wall or surface applications. Available in three face options to complete the design specification that best suits your project.

### SPECIFICATIONS

#### PHYSICAL

dimensions	10.6" Square (15" point to point) x 5.2" Deep
weight	3.5 lbs
housing	Marine grade, corrosion resistant, heavy gauge high pressure die-cast aluminum; captive stainless steel tamper resistant hex head socket screws
lens	Impact and vandal resistant, UV stabilized, white opal, polycarbonate
mounting	Ceiling, wall or surface mount applications: mounting holes allow unit to be attached directly to octagonal junction box
ingress protection	IP65 Rated. Suitable for wet, damp or dry location application, with extruded silicone gasket to seal out contaminants
finish	Six stage chemical iron phosphate conversion pre-treatment. Polyester powder coat finish, 18 µm Min., 5000hr salt spray test (ASTM B117) compliant with Florida / AAMA 2604 specification.

#### PERFORMANCE

color temperature	2700K	3000K	3500K	4000K
lumen output	1170 lm	1750 lm	2500 lm	3500 lm
lifetime	> 70,000 hours / L70 or better			
color consistency	3 SDCM / standard: 85 CRI   optional: 90 CRI			
operating temperature	-13°F to 104°F (-25°C to 40°C)			
junction temperature	73°C @ T <sup>a</sup> 25°C			
warranty	5-Year limited warranty (refer to website for details)			

#### ELECTRICAL

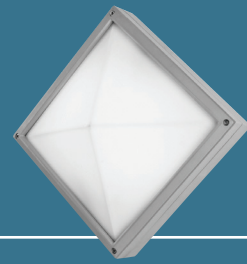
input voltage	Universal 120 - 277 VAC   optional: 347 VAC (Integral)
power supply	Integral Class II, electronic high-power factor > 94% @ 120V
certifications	ETL/cETL Listed, CEC Title 24 JA8 compliant (only 90CRI complies)
standards	UL 1598 / CSA C22.2 No. 250.0; UL 8750 / CSA C22.2 No. 250.13; Class II / IES LM-79 / LM-80
power consumption	41W @ 120V - 277V (maximum)
dimming	Standard: 0-10V (1%)   Optional: ELV (120V Only) / DMX (Integral) / DALI (Integral)

Due to continuous development and improvements, specifications are subject to change without notice. FC Lighting reserves the right to change lab test details or specifications without notice. Product use certifies agreement to FC Lighting terms and conditions. FCC Series Cylinder Lights are engineered and produced in our Illinois manufacturing facility.



US Commercial Lighting Manufacturer Since 1982

**Specification Sheet**



# Ordering Information

## ORDERING INFORMATION

FCW3260										
SERIES	VOLTAGE		CCT		CRI		LUMENS		FINISH	
FCW3260	UNV	120 - 277 VAC	27K	2700K	CRI85	85 CRI (Standard)	12L	1200 lm (15W)	BKE	Black
	120V	120 VAC	3K	3000K	CRI90	90 CRI	18L	1760 lm (22W)	BRE	Bronze
	347V	347 VAC (Remote)	35K	3500K			25L	2500 lm (30.5W)	GRE	Graphite Grey
			4K	4000K			51L	5100 lm (61W)	SLE	Silver
									WHE	White
									CCE	Custom Color
									LD	0-10V Dimming (10%)
									ELV*	ELV Dimming* (120V Only)

## REMOTE DRIVER & BATTERY BACKUP

FCW3260R										
SERIES	VOLTAGE		CCT		CRI		LUMENS		FINISH	
FCW3260R <sup>†</sup>	UNV	120 - 277 VAC	27K	2700K	CRI85	85 CRI (Standard)	12L	1200 lm (15W)	BKE	Black
			3K	3000K	CRI90	90 CRI	18L	1760 lm (22W)	BRE	Bronze
			35K	3500K			25L	2500 lm (30.5W)	GRE	Graphite Grey
			4K	4000K			51L	5100 lm (61W)	SLE	Silver
									WHE	White
									CCE	Custom Color
									LD	0-10V Dimming (10%)
									DMX	DMX Dimming (Remote Only)
									DALI	DALI Dimming (Remote Only)
									BBUR <sup>1</sup>	Battery Backup Remote (Indoor)
									BBUX <sup>2</sup>	Battery Backup Remote (Outdoor)
									N/A	Leave Blank for Remote Driver Only (without Battery Backup)

<sup>†</sup> LED DRIVER REMOTE (INDOOR) IP20, IK08, NEMA 1, -20°C to +50°C, 30' MAX Distance with 12AWG.

\* Consult factory for outdoor remote driver only.

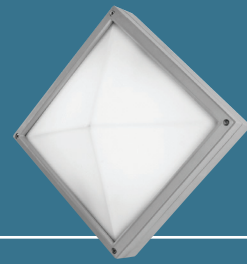
<sup>1</sup> Battery Back-up & LED Driver Remote (INDOOR), IP20, IK08, NEMA 1, 0°C to +48°C, 30' MAX Distance with 12AWG (w/UNV Option Only)

<sup>2</sup> Battery Back-up & LED Driver Remote (OUTDOOR), IP67, IK10, NEMA 4X, -20°C to +55°C, 30' MAX Distance with 12AWG (w/UNV Option Only)

Due to continuous development and improvements, specifications are subject to change without notice. FC Lighting reserves the right to change lab test details or specifications without notice. Product use certifies agreement to FC Lighting terms and conditions. FCC Series Cylinder Lights are engineered and produced in our Illinois manufacturing facility.



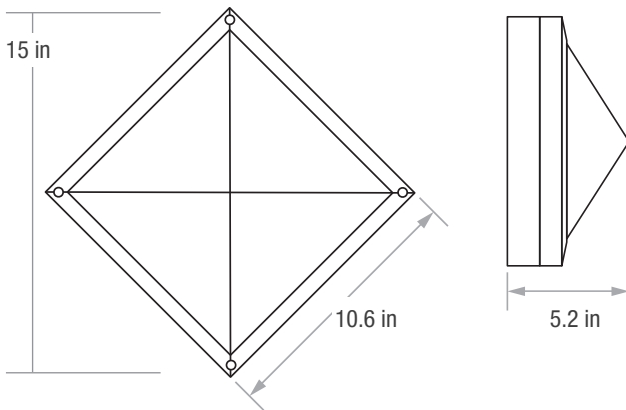
US Commercial Lighting Manufacturer Since 1982



# Dimensions

## PRODUCT DIMENSIONS - STANDARD PRODUCT

height (point to point)	15" W
width (sq)	10.6" W
depth	5.2" D

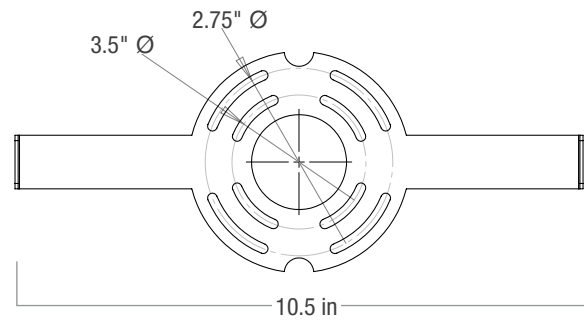


## MOUNTING - *j-box sold by others*

mounting plate width

10.5" W

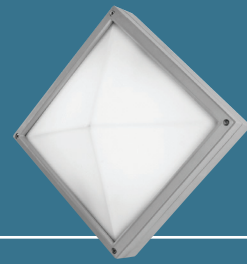
10.5 inch mounting plate:  
mounts flush to surface,  
included with fixture.



3.5" or 2.75" mounting diameter

Due to continuous development and improvements, specifications are subject to change without notice. FC Lighting reserves the right to change lab test details or specifications without notice. Product use certifies agreement to FC Lighting terms and conditions. FCC Series Cylinder Lights are engineered and produced in our Illinois manufacturing facility.

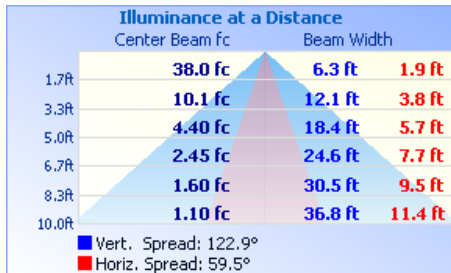
 US Commercial Lighting Manufacturer Since 1982



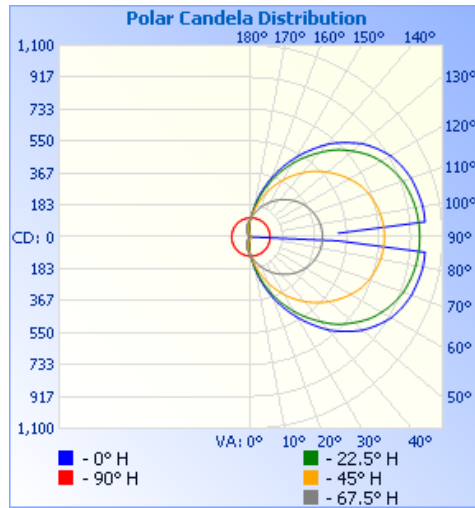
# Photometry

## OPTICAL DISTRIBUTION

<b>lumen output</b>	3500 lm @ 4000K
<b>power consumption</b>	41W

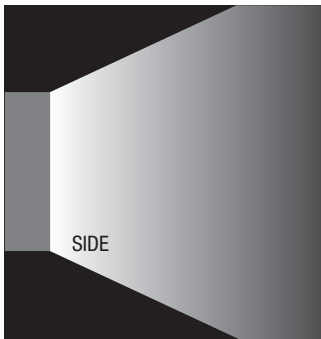


iti illuminations testing laboratory :



FCW3260

FIND IES FILES ON FCLIGHTING.COM



Due to continuous development and improvements, specifications are subject to change without notice. FC Lighting reserves the right to change lab test details or specifications without notice. Product use certifies agreement to FC Lighting terms and conditions. FCC Series Cylinder Lights are engineered and produced in our Illinois manufacturing facility.

 US Commercial Lighting Manufacturer Since 1982

© FC Lighting

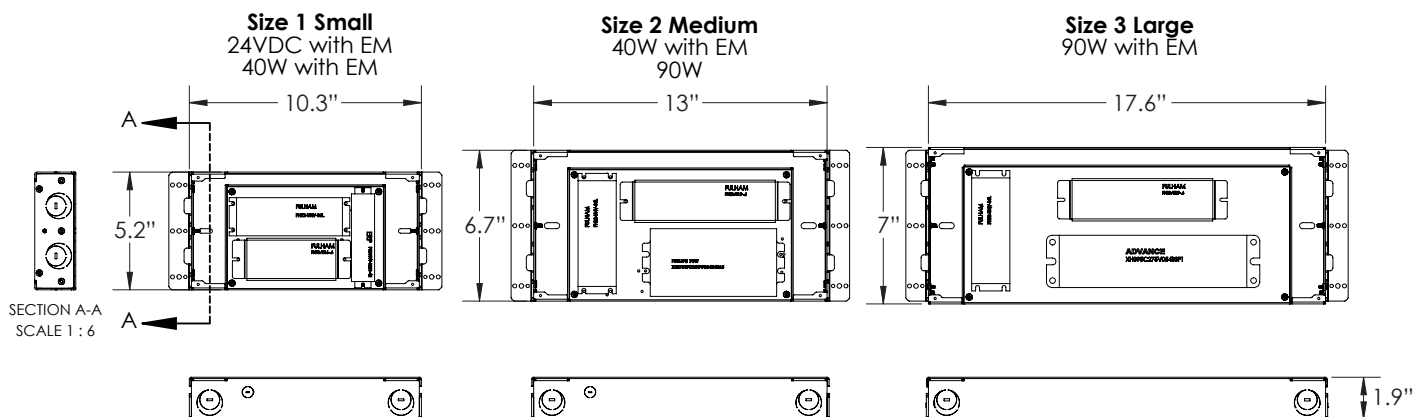
3609 Swenson Ave. • St. Charles, IL • 60174 | fclighting.com | 800.900.1730

**Specification Sheet**

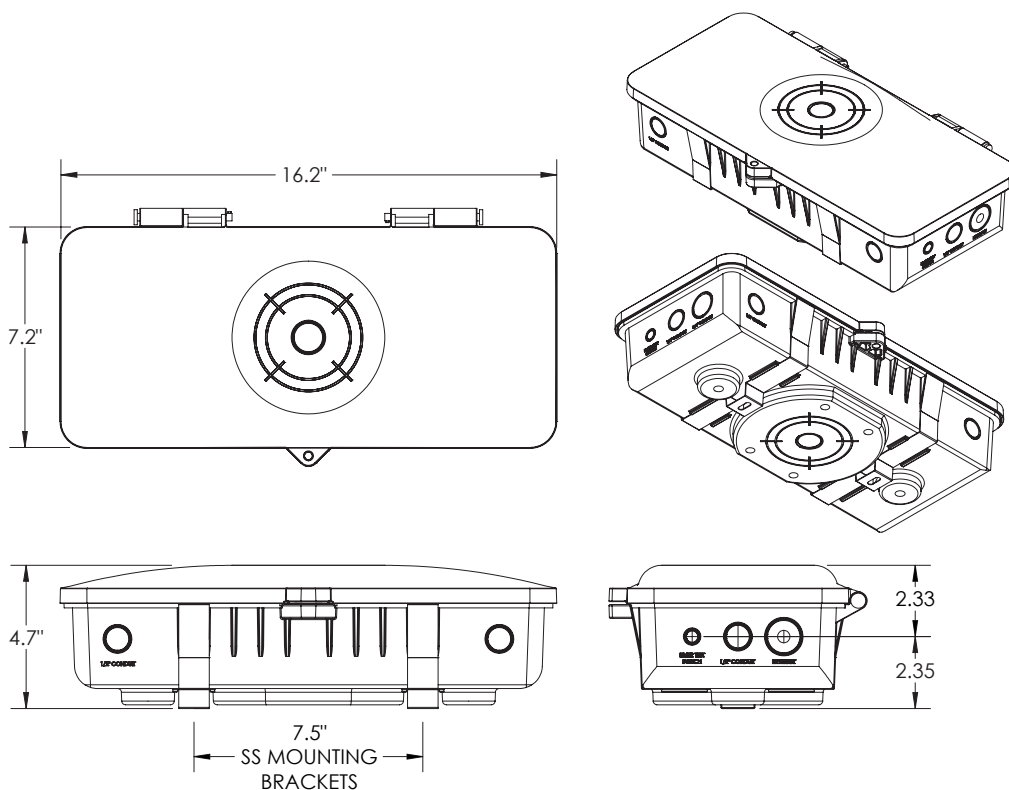
AG-DM-062623

## BATTERY BACK-UPS

**BBUR - BATTERY BACK-UP & LED DRIVER REMOTE (INDOOR), IP20, IK08, NEMA 1, 0°C to +48°C, 30' MAX Distance with 12AWG (w/UNV Option Only)**



**BBUX - BATTERY BACK-UP & LED DRIVER REMOTE (OUTDOOR), IP67, IK10, NEMA 4X, -20°C to +55°C, 30' MAX Distance with 12AWG (w/UNV Option Only)**



Due to continuous development and improvements, specifications are subject to change without notice. FC Lighting reserves the right to change lab test details or specifications without notice. Product use certifies agreement to FC Lighting terms and conditions. FCC Series Cylinder Lights are engineered and produced in our Illinois manufacturing facility.