

FCB5500 RGBW - INSTALLATION INSTRUCTIONS

CAUTION: BEFORE CONNECTING THE LUMINAIRE TO A POWER SUPPLY, MAKE SURE THE POWER IS SWITCHED OFF.

DETAILED ILLUSTRATION

GENERAL:

- Before starting the installation, make sure all electricity has been turned off and electrical breaker has been locked out and tagged out.
- To ensure the success of the installation, be sure to read these instructions and review the diagrams thoroughly before beginning.
- All electrical connections must be in accordance with local codes, ordinances, or the National Electrical Code.

NOTE: The important safeguards and instructions appearing in this manual are not meant to cover all possible conditions and situations that may occur.

1) FOOTING & BASE PLATE MOUNT:

All footings should be poured to direct water away from the base of the luminaire. Drainage should be provided to prevent water from collecting under and around the luminaire. Use Anchor Bolt template.

Note: Threads should be min. 2" above concrete pour. **Fig A**

Note: Conduit should be min. 1"-3"(Max) above concrete pour. **Fig B**

Note: Wires should be min. 6"-12"(Max) above concrete pour. **Fig B**

2) INSTALL MOUNTING BASE:

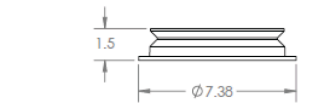
Remove the Base Mount from the column housing by removing the (3) set screws around the bottom edge of the housing. Once footing is set and level, install mounting base. Tighten nuts snug to hold base in place. **TIGHTEN EVENLY, DO NOT OVERTIGHTEN.** Place a continuous bead of silicone between the mounting base and the ground.

3) WIRING:

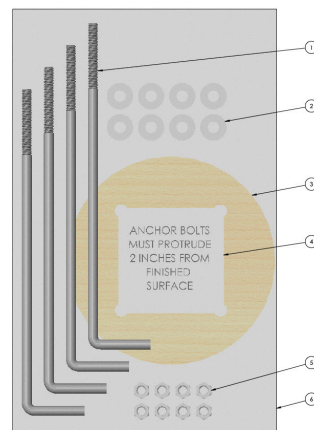
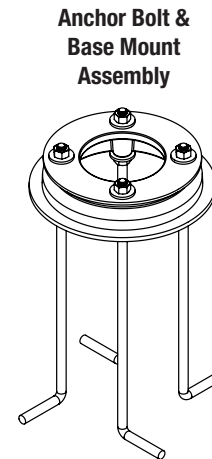
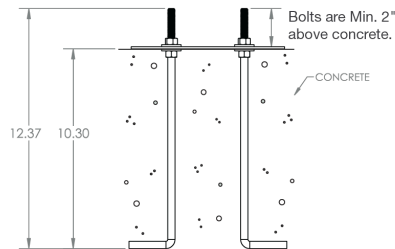
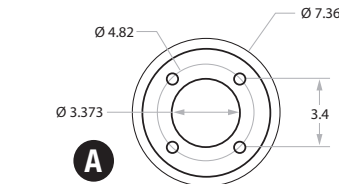
Make wiring connections at the bottom. Use included waterproof wire nuts. All wiring connections must be made in accordance with local electrical codes, ordinances, and the National Electric Code. Follow wiring diagram for DMX. **Fig C**

- Place column housing over mounting base. Tighten the (3) set screws evenly until luminaire is held firmly in a level position. **Fig D**

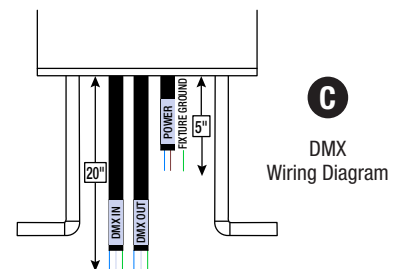
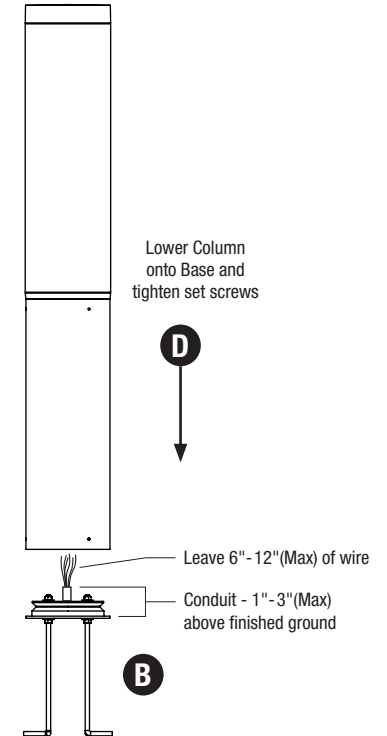
• Set Screw Size: 1/4-20 • Bit Size: 1/8" hex • Torque: 50 in-lb



mounting hole pattern



#	Anchor Bolt Template Assembly (A05500) (Includes below items)	
1	L-Hook Anchor Bolt (X91603A120)	Qty. 4
2	Flat Washers	Qty. 8
3	Anchor Bolt Wood Template	Qty. 1
4	Anchor Bolt Label	Qty. 1
5	Hex Nuts	Qty. 8
6	Plastic Bag, Sealed	Qty. 1



COLOR CODE			
POWER	BROWN	BLACK	L
	BLUE	WHITE	N
	GREEN	GREEN	G
DMX	BLUE	+	+6VDC
	WHITE	-	
	GREEN	GRN	

FCB5500 RGBW - INSTALLATION INSTRUCTIONS - GFCI WIRING DIAGRAM

CAUTION: BEFORE CONNECTING THE LUMINAIRE TO A POWER SUPPLY, MAKE SURE THE POWER IS SWITCHED OFF.

DETAILED ILLUSTRATION

GENERAL:

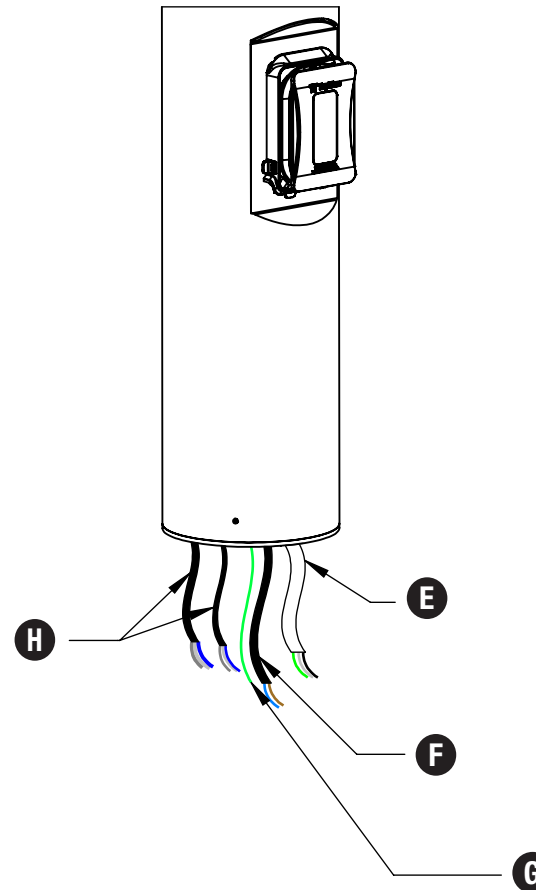
1. Before starting the installation, make sure all electricity has been turned off and electrical breaker has been locked out and tagged out.
2. To ensure the success of the installation, be sure to read these instructions and review the diagrams thoroughly before beginning.
3. All electrical connections must be in accordance with local codes, ordinances, or the National Electrical Code.

NOTE: The important safeguards and instructions appearing in this manual are not meant to cover all possible conditions and situations that may occur.

GFCI WIRING:

1. Use 3 x 12 AWG Cable (Ø0.43" x White GFCI Cable 120V & 20A Max Only) for GFCI Recepticle (Black, White, Green). **Fig E**
2. Use 2 x 18 AWG Cable (Ø0.31" Black Power Cable 120 - 277 VAC) for power to the luminaire (Blue, Brown). **Fig F**
3. Use 18 AWG Ground Cable for luminaire (Green). **Fig G**
4. Use 3 x 22 AWG Cable (Ø0.25" DMX In/Out Cable) for controls (Blue, White, Green). **Fig H**

FCB5500 - RGBW



WARNING
GFCI REQUIRES 120V & 20A MAX
ONLY

COLOR CODE				
GFCI	BLACK	L		120VAC
	WHITE	N		
	GREEN	GRND		
POWER	BROWN	BLACK	L	120VAC- 277VAC
	BLUE	WHITE	N	
	GREEN	GREEN	G	
DMX	BLUE	+		+6VDC
	WHITE	-		
	GREEN	GRN		