



Date: _____
 Type: _____
 Luminaire: _____
 Project: _____

Approved: _____

FCD10R



FCD10R is a World Class 10-inch, round, recessed luminaire designed to meet the challenges of inground installation. With multiple beam options and an adjustable array, the FCD10R is perfect for all uplighting, wallwashing and highlight applications. The luminaire is rated IP68 for ingress, IK10 for impact, and 5000 kilogram drive over, making it ideal for any rugged environment. The unique design utilizes connectors for fast connection of power and control, and allows simple, fast alignment and aiming.

SPECIFICATIONS

PHYSICAL

length/dimension	Luminaire: 9.84" Ø x 8.46" D, Well Housing: 10.3" Ø x 12.52" D
weight	10 lbs
housing	Luminaire: marine grade, corrosion-resistant, high pressure aluminum (includes mounting sleeve), Well Housing: PVC
lens	Tempered glass, IK10 impact rated, anti-slip
mounting	Pavement, concrete, sand, soil
ingress protection	IP68 Rated for dry, damp or wet locations
impact resistance	IK10
drive over rating	5000 kg
construction	E-coat aluminum body, 316 stainless steel trim ring and hardware for superior corrosion resistance

PERFORMANCE

source	LED (high power, narrow beam angle)
color temperature	2700K, 3000K, 3500K, 4000K, 5000K
lumen output	5000 lm
beam spread	Narrow Spot - 6° (LED only), Spot - 10°, Narrow Flood - 25°, Flood - 40°, Wide Flood - 60°
array tilt	+/- 25° exterior adjustment
lumen maintenance	L70 > 100,000 hours
operating temperature	-4°F to 122°F (-20°C to 50°C)
warranty	10-Year limited warranty

ELECTRICAL

input voltage	Universal 120 - 277 VAC
power consumption	50W
power supply	Integral or remote Class II, electronic high-power factor 99% @ 120V
certification	ETL / cETL Listed, FCC-Part 15 Class A
standards	UL1598 / CSA C22.2 No. 250.0 - Class I / IES LM-79 / LM-80

WC = World Class Features. See page 2 for details.

Note: FCD10R model shown in cutaway.



Aesthetic and Durability:

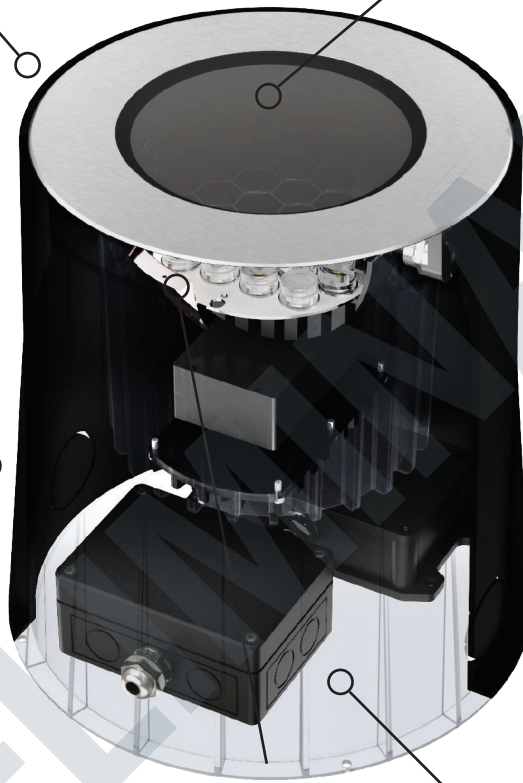
Fastener-free trim ring and recessed LED array provide a visually attractive design with minimal glare. The lens is an IK10 (IEC 62262), 5000 kg driver over, impact-resistant, crystal-clear, low iron, heavy gauge glass to ensure durability in even the most extreme environments.

High-Efficacy Lighting Performance:

High performance LED and electronic design provides an industry-leading 5000 lumens of light output. Precise optic options deliver focused, clean beam control from 6 to 60 degrees. Robust mechanical design allows for simple positioning and aiming, delivering maximum flexibility and adjustability for any installation.

Simplified Installation:

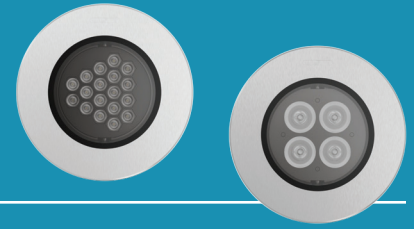
Initial installation of the rugged PVC pour sleeve, input wire box and blackout cover set the stage for final installation at project end. The wirebox, driver box and luminaire feature IP68 connectors to quickly interconnect each unit quickly with no chance of mis-wiring power or control lines. The unit can rotate 360 degrees, and tilt +/- 25 degrees providing perfect aiming of the light output.



Rugged, Long-Life Design:

Heavy Walled Low Copper Content High Pressure Die-cast housing and Stainless Steel trim ring are treated and coated to meet 5K hour salt spray to ASTM B117. Inert silicone gasketing, breather vents and anti-siphon cables enable an IP68 ingress protection rating per IEC 60529 standards. The future-proof wire box/driver box/luminaire design provides simple future upgrades and ensures ultimate protection in the most severe wet environments including washdowns.





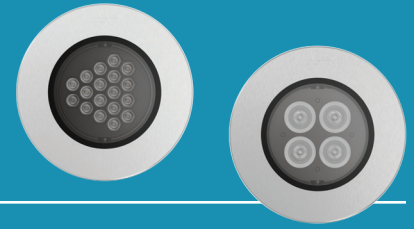
Ordering Information

ORDERING INFORMATION

SERIES	VERSION	VOLTAGE	LIGHT SOURCE	CRI/CCT	POWER	TRIM FINISH	LED OPTICS	OPTIONS
FCD10R	ADJ Adjustable Gimble	UNV 120 - 277 VAC	LED LED Source	927 2700K, 90CRI	50W 50 Watts	SS Stainless Steel	NSP Narrow Spot (6°)	LD 0-10V Dimming (1%)
	AGL Anti-Glare Recessed		930 3000K, 90CRI	SP Spot (10°)			SR Slip Resistant Lens	
	935 3500K, 90CRI		NFL Narrow (25°)	HC Honeycomb Louver				
	940 4000K, 90CRI		FL Flood (40°)	DF Soft Diffuser				
	950 5000K, 90CRI		WFL Wide Flood (60°)					

PRELIMINARY





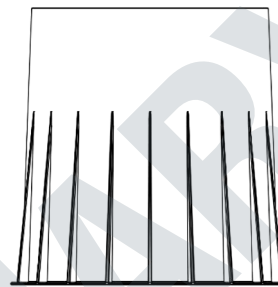
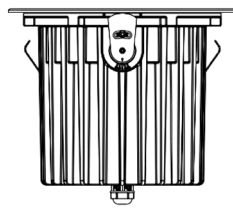
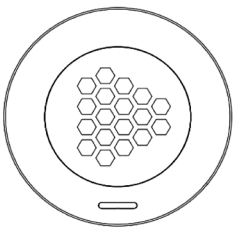
Dimensions

PRODUCT DIMENSIONS - STANDARD PRODUCT	
width	outside diameter 9.84" Ø
depth	8.46" D

MOUNTING - <i>mounting sleeve included, one per luminaire</i>	
PVC housing	10.3" Ø
well housing depth	12.52" D

marine grade aluminum housing
with 316 stainless steel faceplate

french drain required for proper installation,
see installation instructions



PRELIMINARY