

Date: _____
Type: _____
Fixture: _____
Project: _____

Approved:

FCD46R



FCD46R 4.3 inch round inground recessed fixture with stainless steel faceplate is IP67 rated for exterior use where inground applications are required.



SPECIFICATIONS

PHYSICAL

beam spread	spot (20°) narrow flood (40°) flood (50°) wide flood (72°)
dimensions	fixture: 4.3" Ø x 4.5" D housing: 5.7" D x 3.9" Ø (top)
weight	1 lbs
housing	marine grade, corrosion resistant, high pressure aluminum (includes mounting sleeve)
lens	3/8" thick clear tempered glass
mounting	concrete pour installation (mounting sleeve included) - drainage required (Improperly installed fixtures will void warranty)
ingress protection	IP67 : dry, damp or wet locations with extruded silicone to seal out contaminants
finish	316 machined stainless steel faceplate

PERFORMANCE

color temperature	2700K	3000K	3500K	4000K
lumen output	300 lm			
lifetime	> 70,000 hours / L70 or better			
color consistency	3 SDCM / 85CRI optional: 90CRI			
operating temperature	-4°F to 104°F (-20°C to 40°C)			
warranty	5 year limited warranty (refer to website for details)			

ELECTRICAL

input voltage	Universal 120–277V AC
power supply	Integral Class II, electronic, high power factor > 94% @120V
certifications	ETL/cETL Listed
standards	UL1598/CSA C22.2 No. 250.0; UI 8750/CSA C22.2 No. 250.13/IES LM-79/LM-80
power consumption	6W @ 120V - 277V

Due to continuous development and improvements, specifications are subject to change without notice. FC Lighting reserves the right to change lab test details or specifications without notice. Product use certifies agreement to FC Lighting terms and conditions. FCC Series Cylinder Lights are engineered and produced in our Illinois manufacturing facility.

FCD46R



Ordering Information

ORDERING INFORMATION

SERIES	VOLTAGE	CCT	LUMENS	CRI	FINISH	OPTICS	OPTIONS
FCD46R	UNV 120V-277V	27K 2700K 3K 3000K 35K 3500K 4K 4000K	3L 300 lm (6W)	CRI90 90 CRI	SS Stainless Steel	SP Spot (20°) NFL Narrow Flood (40°) FL Flood (50°) WFL Wide Flood (72°)	LD LED Dimming (0-10V) standard

Due to continuous development and improvements, specifications are subject to change without notice. FC Lighting reserves the right to change lab test details or specifications without notice. Product use certifies agreement to FC Lighting terms and conditions. FCC Series Cylinder Lights are engineered and produced in our Illinois manufacturing facility.

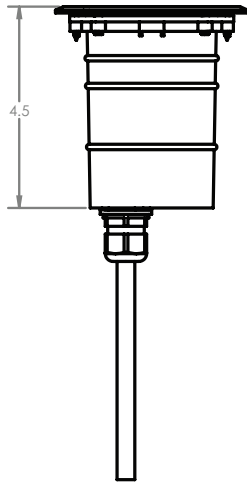
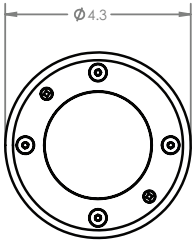
Physical

FCD46R



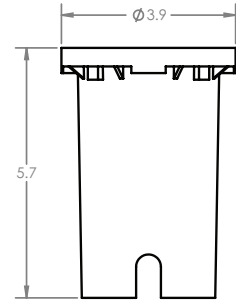
PRODUCT DIMENSIONS - STANDARD PRODUCT	
width	4.3" Ø
depth	4.5" D

marine grade aluminum housing with 316 stainless steel faceplate

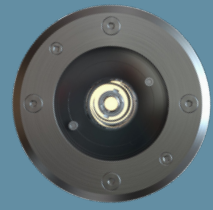


MOUNTING - <i>mounting sleeve included, one per fixture</i>	
PVC housing	3.9" Ø
well housing depth	5.7" D

french drain required for proper installation, see installation instructions

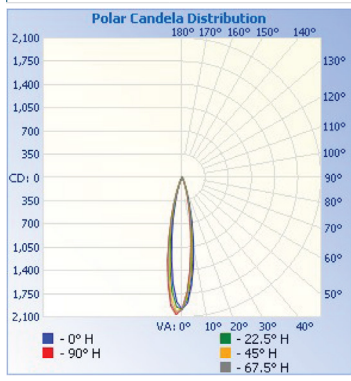


Due to continuous development and improvements, specifications are subject to change without notice. FC Lighting reserves the right to change lab test details or specifications without notice. Product use certifies agreement to FC Lighting terms and conditions. FCC Series Cylinder Lights are engineered and produced in our Illinois manufacturing facility.



SPOT DISTRIBUTION

beam spread | 20°



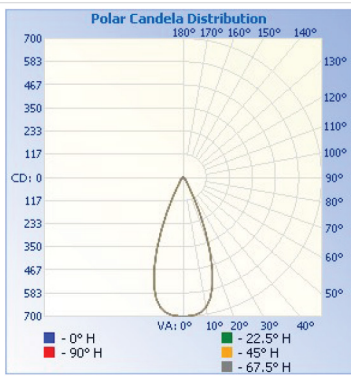
Center Beam fc	Beam Width	
1.7R	687 fc	0.6 ft 0.6 ft
3.3R	182 fc	1.1 ft 1.1 ft
5.0R	79.4 fc	1.7 ft 1.7 ft
6.7R	44.2 fc	2.2 ft 2.2 ft
8.3R	28.8 fc	2.8 ft 2.8 ft
10.0R	19.8 fc	3.3 ft 3.3 ft

■ Vert. Spread: 19.0°
■ Horiz. Spread: 19.0°

illuminations testing laboratory:
Report #6589

NARROW DISTRIBUTION

40°



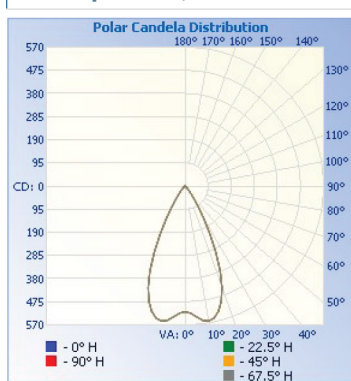
Center Beam fc	Beam Width	
3.3R	64.3 fc	2.5 ft
6.7R	15.6 fc	5.2 ft
10.0R	7.00 fc	7.7 ft
13.3R	3.96 fc	10.2 ft
16.7R	2.51 fc	12.8 ft
20.0R	1.75 fc	15.4 ft

■ Beam Spread: 42.1°

illuminations testing laboratory:
Report #6607

FLOOD DISTRIBUTION

beam spread | 50°



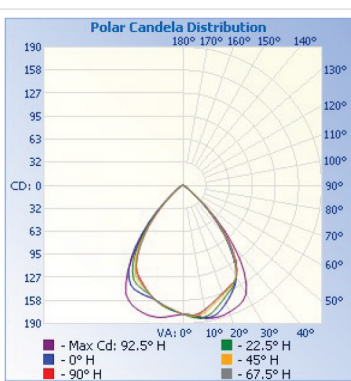
Center Beam fc	Beam Width	
3.3R	47.3 fc	2.9 ft 3.2 ft
6.7R	11.5 fc	5.9 ft 6.4 ft
10.0R	5.15 fc	8.8 ft 9.6 ft
13.3R	2.91 fc	11.7 ft 12.7 ft
16.7R	1.85 fc	14.6 ft 16.0 ft
20.0R	1.29 fc	17.5 ft 19.2 ft

■ Vert. Spread: 47.4°
■ Horiz. Spread: 51.2°

illuminations testing laboratory:
Report #6508

WIDE FLOOD DISTRIBUTION

72°



Center Beam fc	Beam Width	
1.7R	61.2 fc	2.6 ft 2.7 ft
3.3R	16.3 fc	5.0 ft 5.3 ft
5.0R	7.08 fc	7.5 ft 8.1 ft
6.7R	3.94 fc	10.1 ft 10.8 ft
8.3R	2.57 fc	12.5 ft 13.4 ft
10.0R	1.77 fc	15.0 ft 16.1 ft

■ Vert. Spread: 73.8°
■ Horiz. Spread: 77.8°

illuminations testing laboratory:
Report #6571

Due to continuous development and improvements, specifications are subject to change without notice. FC Lighting reserves the right to change lab test details or specifications without notice. Product use certifies agreement to FC Lighting terms and conditions. FCC Series Cylinder Lights are engineered and produced in our Illinois manufacturing facility.