

Date:		Approved:
Type:		
Luminaire:		
Project:		

FCD7002



FCD7002 Linear Inground Uplight is ETL listed for wet locations. Housing is marine grade, corrosion resistant, heavy walled, high pressure aluminum construction with 316 machined brushed stainless steel trim (aluminum well housing included). Lens is impact resistant, clear, tempered glass. Reflector is precision formed semi-specular aluminum for maximum reflectance with LED.

SPECIFICATIONS

PHYSICAL

beam spread	Spot, Narrow Flood, Flood, Wide Flood, Asymmetric
lengths/dimensions	luminaire: 4.75"W x 3.6"D x 48.8"L, mounting sleeve: 4.3"W x 9.5"D x 48"L
weight	20 lbs
housing	marine grade, corrosion resistant, high pressure aluminum (includes mounting sleeve)
lens	standard: IK10 impact compliant, 3/8" thick clear tempered, optional: SR = Slip Resistance, etched outer surface
mounting	concrete pour installation (mounting sleeve included) - drainage required (improperly installed luminaires will void warranty)
ingress protection	IP67: dry, damp or wet locations with neoprene continuous closed cell gasket to seal out contaminants
load rating	4,000 lbs, static
finish	316 machined stainless steel faceplate

PERFORMANCE

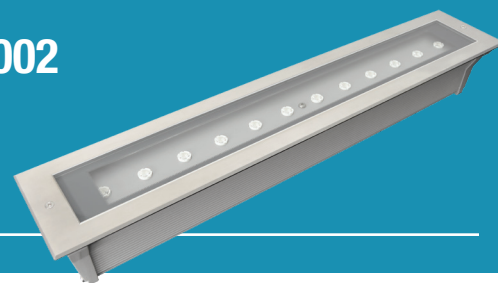
color temperature	2700K, 3000K, 3500K, 4000K
lumen output (typical)	3000 lm, 4000 lm
lumen maintenance	L90 > 70,000 hours
color consistency	2 SDCM, standard: 84CRI, optional: 90CRI
operating temperature	-13°F to 104°F (-25°C to 40°C)
warranty	5 year limited warranty

ELECTRICAL

input voltage	Universal 120 - 277 VAC
power supply	integral Class II, electronic high-power factor > 94% @ 120V
certifications	ETL / cETL Listed
standards	UL 1598 / CSA C22.2 No. 250.0 - Class I / IES LM-79 / LM-80
power consumption	28W @ 120V, 38W @ 120V
dimming interface	standard: Tri-Dim (1%, 0-10V, 120 - 277 VAC), (1%, TRIAC & ELV, 120 VAC Only)

FCD7002

Ordering Information



ORDERING INFORMATION

ORDERING INFORMATION										
FCD7002								SS		
SERIES	VOLTAGE	CCT	CRI	LUMENS (TYPICAL)	FINISH	OPTICS	OPTIONS			
FCD7002 (4 ft)	UNV UNV 120 - 277 VAC	27K 2700K	CRI84 84 CRI	30L 3000 lm (28W)	SS Stainless Steel	SP Spot	TD Tri-Dim (1%, 0-10V, 120 - 277 VAC), (1%, TRIAC & ELV, 120 VAC Only) (Standard) LVR Louver WL Opal Lens (<i>Asymmetrical N/A</i>) SR Slip Resistant (Frosted Lens)			
	120V 120 VAC (integral)	3K 3000K	CRI90 90 CRI	40L 4000 lm (38W)		NFL Narrow Flood				
	277V 277 VAC* (integral)	35K 3500K				FL Flood				
		4K 4000K				AYM Asymmetrical				
						WFL Wide Flood				

REMOTE DRIVER & BATTERY BACKUP

REMOTE DRIVER & BATTERY BACKUP										
FCD7002R		UNV						SS		
SERIES	VOLTAGE	CCT	CRI	LUMENS (TYPICAL)	FINISH	OPTICS	OPTIONS			
FCD7002R [†] (4 ft)	UNV 120 - 277 VAC	27K 2700K	CRI84 84 CRI	30L 3000 lm (28W)	SS Stainless Steel	SP Spot	TD Tri-Dim (1%, 0-10V, 120 - 277 VAC), (1%, TRIAC & ELV, 120 VAC Only) (Standard) LVR Louver WL Opal Lens (<i>Asymmetrical N/A</i>) SR Slip Resistant (Frosted Lens) BBUR ¹ Battery Backup Remote (Indoor) BBUX ² Battery Backup Remote (Outdoor) N/A Leave Blank for Remote Driver Only (without Battery Backup)			
		3K 3000K	CRI90 90 CRI	40L 4000 lm (38W)		NFL Narrow Flood				
		35K 3500K				FL Flood				
		4K 4000K				AYM Asymmetrical				
						WFL Wide Flood				

[†] LED DRIVER REMOTE (INDOOR) IP20, IK08, NEMA 1, -20°C to +50°C, 30' MAX Distance with 12AWG.

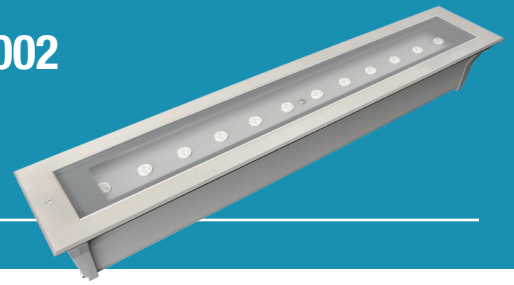
*Consult factory for outdoor remote driver only.

¹ Battery Back-up & LED Driver Remote (INDOOR), IP20, IK08, NEMA 1, 0°C to +48°C, 30' MAX Distance with 12AWG (w/UNV Option Only)

² Battery Back-up & LED Driver Remote (OUTDOOR), IP67, IK10, NEMA 4X, -20°C to +55°C, 30' MAX Distance with 12AWG (w/UNV Option Only)

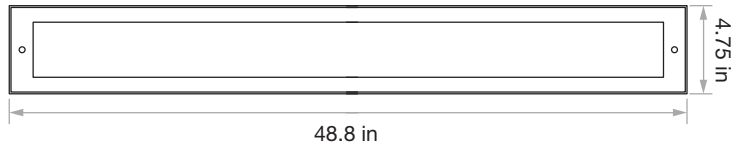
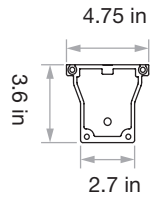


Dimensions



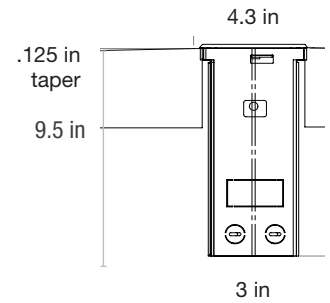
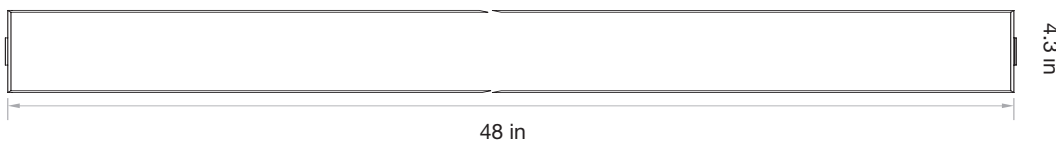
PRODUCT DIMENSIONS - STANDARD PRODUCT

width	4.75" W
depth	3.6" D
length	48.8" L



MOUNTING - mounting sleeve included, one per luminaire

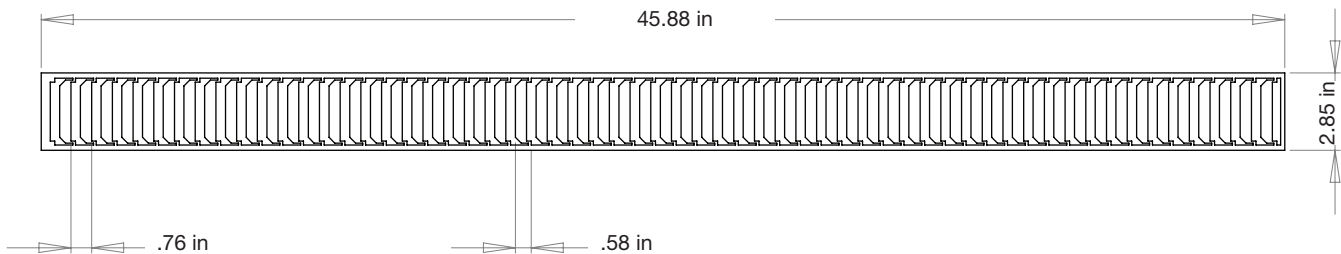
mounting sleeve width	4.3" W
mounting sleeve length	48" L
well housing depth	9.5" D

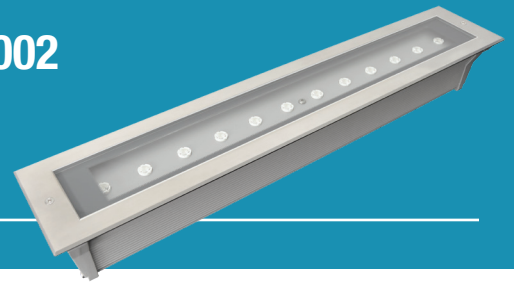


ACCESSORIES

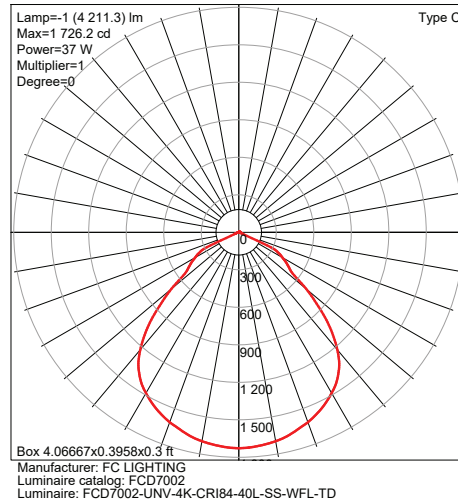
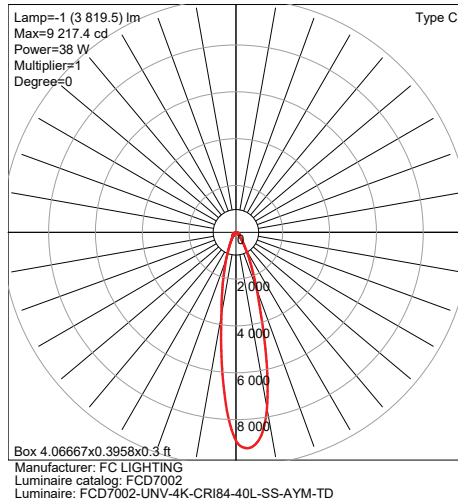
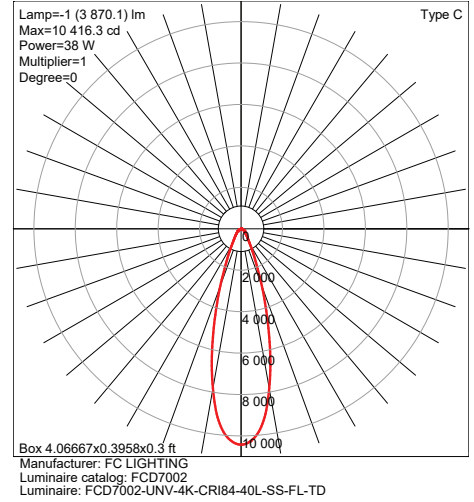
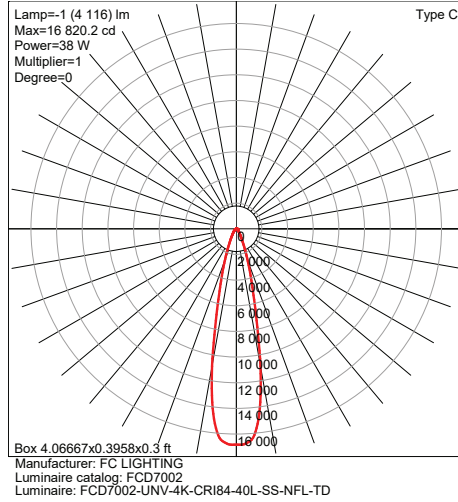
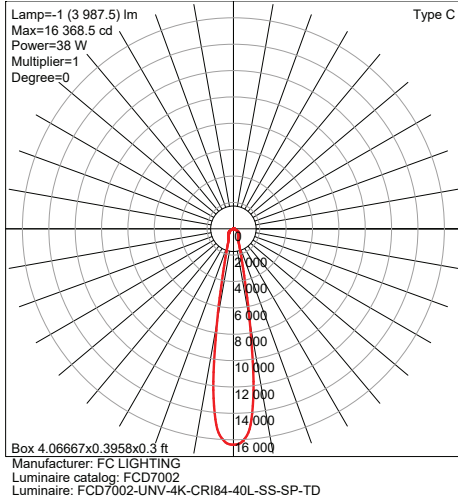
LVR - louver	inside housing
--------------	----------------

factory installation required



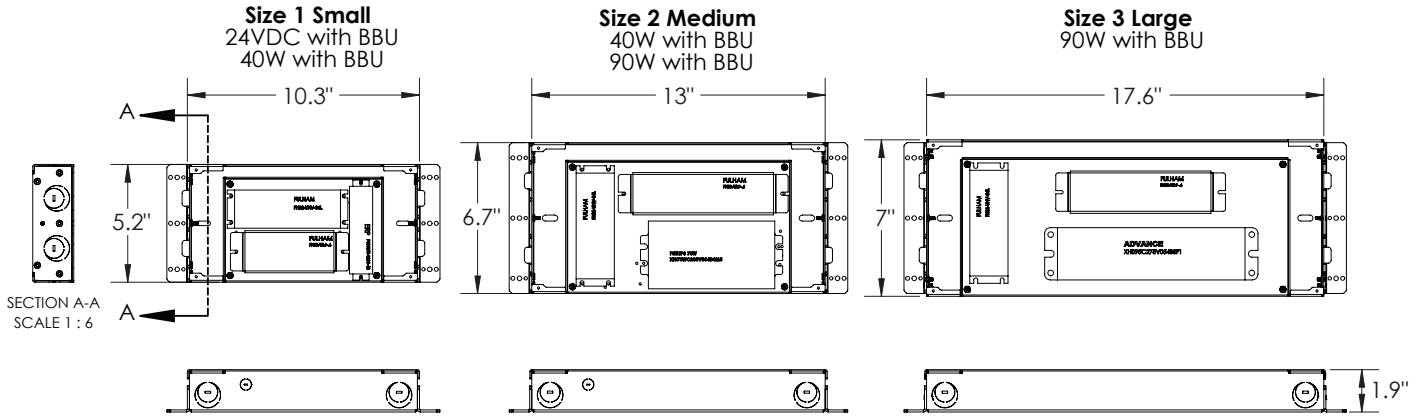


OPTICAL DISTRIBUTION FOR 40L LUMINAIRE



BATTERY BACK-UPS

BBUR - BATTERY BACK-UP & LED DRIVER REMOTE (INDOOR), IP20, IK08, NEMA 1, 0°C to +48°C, 30' MAX Distance with 12AWG (w/UNV Option Only)



BBUX - BATTERY BACK-UP & LED DRIVER REMOTE (OUTDOOR), IP67, IK10, NEMA 4X, -20°C to +55°C, 30' MAX Distance with 12AWG (w/UNV Option Only)

