

Date:	Approved:
Type:	
Fixture:	
Project:	

FCSL591



FCSL591 IP65 rated exterior die-cast aluminum step light for masonry applications. Corrosion resistant construction, this fixture provides illumination for damp, dry or wet areas.

SPECIFICATIONS

PHYSICAL

dimensions	9.125" W x 7.75" H x 4.4" D
weight	1.5 lbs
housing	Marine grade, corrosion resistant, heavy gauge aluminum faceplate
lens	White glass lens
mounting	Concrete pour, masonry applications
ingress protection	IP65 : dry, damp or wet locations with extruded silicone gasket to seal out contaminants
faceplate finish	Six stage chemical iron phosphate conversion pre-treatment. Polyester powder coat finish, 18 µm Min., 5000hr salt spray test (ASTM B117) compliant with Florida / AAMA 2604 specification.

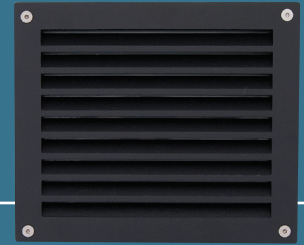
PERFORMANCE

color temperature	2700K	3000K	3500K	4000K
lumen output	360 lm			
lifetime	> 70,000 hours / L70 or better			
color consistency	3 SDCM / 85 CRI			
operating temperature	-13°F to 104°F (-25°C to 40°C)			
junction temperature	73°C @ T ^a 25°C			
warranty	5-Year limited warranty (refer to website for details)			

ELECTRICAL

input voltage	Universal 120 - 277 VAC optional: 347 VAC (Integral)
power supply	Integral Class II, electronic high-power factor > 94% @120V
certifications	ETL / cETL Listed, ADA compliant
standards	UL1598/CSA C22.2 No. 250.0; UL 8750/CSA C22.2 No. 250.13/IES LM-79/LM-80
power consumption	28W @ 120 - 277 VAC
dimming	0-10V (10%)

Due to continuous development and improvements, specifications are subject to change without notice. FC Lighting reserves the right to change lab test details or specifications without notice. Product use certifies agreement to FC terms and conditions.



Ordering Information

ORDERING INFORMATION

FCSL591						4L					
SERIES	VOLTAGE		CCT		CRI		LUMENS		FINISH		OPTIONS
FCSL591	UNV	120 - 277 VAC	27K	2700K	CRI85	85 CRI	4L	360 lm (28W)	BKE	Black	LD Dimming 0-10V (Integral) (Standard)
	347V	277 VAC	3K	3000K					BRE	Bronze	LBB Less Back Box (for shipment separate of Back Box)
			35K	3500K					GRE	Graphite Grey	
			4K	4000K					SLE	Silver	
									WHE	White	
									CCE	Custom Color	

BACK BOX KITS

H00590-ETL Back Box Kit - Complete Back Box shipped in advance of fixture without mounting kit.

Consult Factory for other options and configurations.

To ensure you receive proper configurations for your lighting specifications, contact us directly about any unique application requirements. This may include but not be limited to lumen output, mounting needs, or electrical requirements.

Due to continuous development and improvements, specifications are subject to change without notice. FC Lighting reserves the right to change lab test details or specifications without notice. Product use certifies agreement to FC terms and conditions.

 US Commercial Lighting Manufacturer Since 1982

© FC Lighting 3609 Swenson Ave. • St. Charles, IL • 60174 | fcighting.com | 800.900.1730

Specification Sheet

AG-DM-062923



Dimensions

PRODUCT DIMENSIONS - STANDARD PRODUCT		MOUNTING - <i>j-box sold by others</i>	
width	9.125" W	back box width	8.9" W
height	7.75" H	back box height	7" H
depth	4.25" D	back box depth	4.4" D

7.5 in

4.25 in

9.125 in

7.75 in

8.9"

4.4"

back box housing

back box mounts inside brick masonry: faceplate flush to surface or in front of surface - see installation instructions for proper mounting directions

Due to continuous development and improvements, specifications are subject to change without notice. FC Lighting reserves the right to change lab test details or specifications without notice. Product use certifies agreement to FC terms and conditions.