

Date:

Approved:

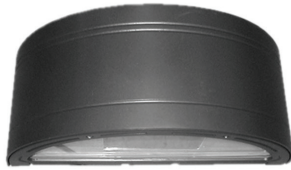
Type:

Luminaire:

Project:

FCW1033

Up, 18" Wide single direction
Die-Cast Aluminum Exterior
Architectural Wall Mount.



SPECIFICATION

MOUNTING

- Mounts directly to standard outlet box. Additional mounting holes allow unit to be attached directly to mounting surface.
- Can be used as an up light.

CONSTRUCTION

- Marine grade, corrosion resistant, heavy walled, high pressure die-cast aluminum. Die-cast back mounting plate.
- Impact resistant, clear, tempered glass. Precision formed semi-specular aluminum for maximum reflectance.
- Rubber silicone to seal contaminants. Captive stainless steel, tamper resistant hex socket screws.

LED

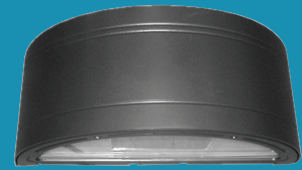
- Lumens stated are the minimum delivered out of the luminaire. LED lifetime is greater than or equal to 70,000 hours with the lumen depreciation greater than L70. All of our luminaires are tested to LM 80 with an 80 CRI, color consistency of 4 SDCM. Integral power supply standard. Input voltage 120V or 277V. Consult factory for dimming and any single color options. FCW1035 delivers the same lumens each direction, up and down.

FINISH

- Six stage chemical iron phosphate conversion pre-treatment. Polyester powder coat finish, 18 µm minimum, 5,000 hour salt spray test (ASTM B117) compliant with Florida / AAMA 2604 specification.

LISTING

- UL & cUL/ETL, U.S. and CA listed for wet locations. IP65 rating.



Ordering Information

ORDERING INFORMATION

FCW1033													
MODEL		VOLTAGE		CCT		LUMENS		FINISH		OPTICS		OPTIONS	
FCW1033	Up	120V	27K	2700K	10L	1000 lm (10.3W)		BKE	Black	USP	Spot	LD	0-10V Dimming
		277V	3K	3000K	13L	1325 lm (13.6W)		BRE	Bronze	UNFL	Narrow Flood	F	Fuse
		347V	35K	3500K	18L	1750 lm (18W)		GRE	Graphite Grey	UFL	Flood		
			4K	4000K			SLE	Silver	UWFL	Wide Flood			
							WHE	White					
							CCE	Custom Color					

REMOTE DRIVER & BATTERY BACKUP

FCW1033R											
MODEL	VOLTAGE	CCT	LUMENS		FINISH		OPTICS		OPTIONS		
FCW1033R [†] Up	120V	27K	2700K	10L	1000 lm (10.3W)	BKE	Black	USP	Spot	LD	0-10V Dimming
	277V	3K	3000K	13L	1325 lm (13.6W)	BRE	Bronze	UNFL	Narrow Flood	F	Fuse
	347V	35K	3500K	18L	1750 lm (18W)	GRE	Graphite Grey	UFL	Flood	BBUR ¹	Battery Backup Remote (Indoor)
		4K	4000K			SLE	Silver	UWFL	Wide Flood	BBUX ²	Battery Backup Remote (Outdoor)
						WHE	White			DRR ¹	LED Driver Only Remote (Indoor)
						CCE	Custom Color			DRX ²	LED Driver Only Remote (Outdoor)

[†] LED DRIVER REMOTE (INDOOR) IP20, IK08, NEMA 1, -20°C to +50°C, 30' MAX Distance with 12AWG.

*Consult factory for outdoor remote driver only.

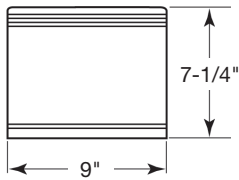
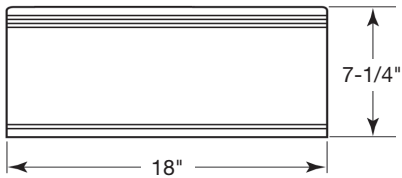
¹ Battery Back-up & LED Driver Remote (INDOOR), IP20, IK08, NEMA 1, 0°C to +48°C, 30' MAX Distance with 12AWG (w/UNV Option Only)

² Battery Back-up & LED Driver Remote (OUTDOOR), IP67, IK10, NEMA 4X, -20°C to +55°C, 30' MAX Distance with 12AWG (w/UNV Option Only)



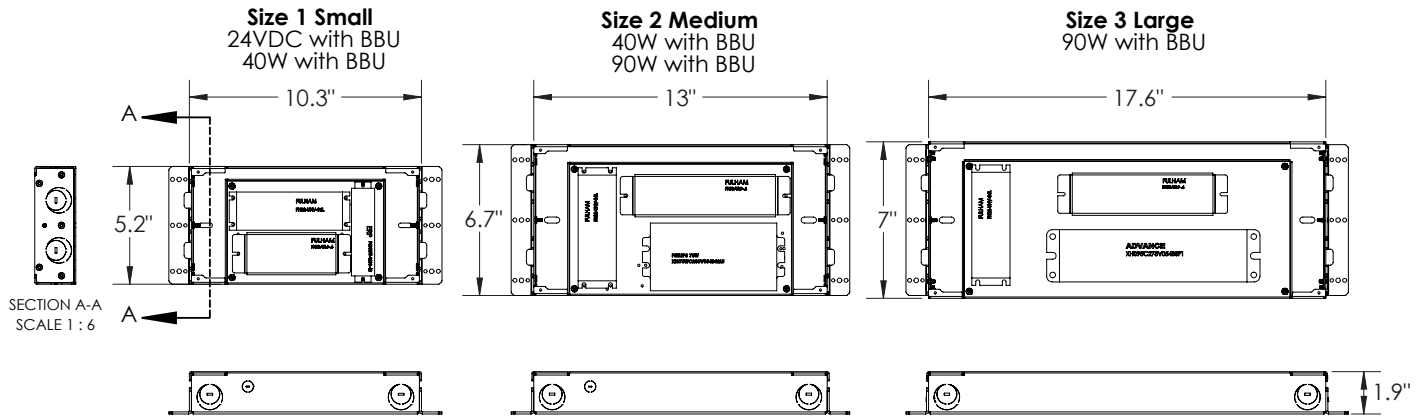
Dimensions

FCW1033



BATTERY BACK-UPS

BBUR - BATTERY BACK-UP & LED DRIVER REMOTE (INDOOR), IP20, IK08, NEMA 1, 0°C to +48°C, 30' MAX Distance with 12AWG (w/UNV Option Only)



BBUX - BATTERY BACK-UP & LED DRIVER REMOTE (OUTDOOR), IP67, IK10, NEMA 4X, -20°C to +55°C, 30' MAX Distance with 12AWG (w/UNV Option Only)

