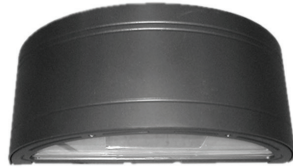


Date: \_\_\_\_\_  
 Type: \_\_\_\_\_  
 Fixture: \_\_\_\_\_  
 Project: \_\_\_\_\_

Approved: \_\_\_\_\_

## FCW1035

Up/Down, 18" Wide bi-direction  
 Die-Cast Aluminum Exterior  
 Architectural Wall Mount.



### ORDERING

MODEL	VOLTAGE	CCT	LUMENS (UP/DOWN)	FINISH	OPTICS	OPTIONS
<b>FCW1035</b>						
<b>FCW1035</b> Up/Down	<b>120V</b>	<b>27K</b> 2700K	<b>10L</b> 1000 lm (20W)	<b>BKE</b> Black	<b>Up</b>	<b>Down</b> <b>LD</b> 0-10V Dimming
	<b>277V</b>	<b>3K</b> 3000K	<b>13L</b> 1325 lm (28W)	<b>BRE</b> Bronze	<b>UNFL</b> Narrow Flood	<b>DNFL</b>
	<b>347V</b>	<b>35K</b> 3500K	<b>18L</b> 1750 lm (36W)	<b>GRE</b> Graphite Grey	<b>UFL</b> Flood	<b>DFL</b>
		<b>4K</b> 4000K		<b>SLE</b> Silver	<b>UWFL</b> Wide Flood	<b>DWFL</b>
				<b>WHE</b> White		
				<b>CCE</b> Custom Color		

\* Lumen Output in each direction (i.e. 10L = 10L in the up direction and 10L in the down direction). Unequal lumen outputs not offered. Wattage listed is total wattage of the fixture.

### REMOTE DRIVER & BATTERY BACKUP

MODEL	VOLTAGE	CCT	LUMENS (UP/DOWN)	FINISH	OPTICS	OPTIONS
<b>FCW1035R</b>	<b>UNV</b>					
<b>FCW1035R<sup>†</sup></b> Up/Down	<b>UNV</b> 120 - 277 VAC	<b>27K</b> 2700K	<b>10L</b> 1000 lm (20W)	<b>BKE</b> Black	<b>Up</b>	<b>Down</b> <b>LD</b> 0-10V Dimming
		<b>3K</b> 3000K	<b>13L</b> 1325 lm (28W)	<b>BRE</b> Bronze	<b>UNFL</b> Narrow Flood	<b>DNFL</b> <b>BBUR<sup>1</sup></b> Battery Backup Remote (Indoor)
		<b>35K</b> 3500K	<b>18L</b> 1750 lm (36W)	<b>GRE</b> Graphite Grey	<b>UFL</b> Flood	<b>DFL</b> <b>BBUX<sup>2</sup></b> Battery Backup Remote (Outdoor)
		<b>4K</b> 4000K		<b>SLE</b> Silver	<b>UWFL</b> Wide Flood	<b>DWFL</b> <b>N/A</b> Leave Blank for Remote Driver Only (without Battery Backup)
				<b>WHE</b> White		
				<b>CCE</b> Custom Color		

\* Lumen Output in each direction (i.e. 10L = 10L in the up direction and 10L in the down direction). Unequal lumen outputs not offered. Wattage listed is total wattage of the fixture.

<sup>†</sup> LED DRIVER REMOTE (INDOOR) IP20, IK08, NEMA 1, -20°C to +50°C, 30' MAX Distance with 12AWG.

\*Consult factory for outdoor remote driver only.

<sup>1</sup> Battery Back-up & LED Driver Remote (INDOOR), IP20, IK08, NEMA 1, 0°C to +48°C, 30' MAX Distance with 12AWG (w/UNV Option Only)

<sup>2</sup> Battery Back-up & LED Driver Remote (OUTDOOR), IP67, IK10, NEMA 4X, -20°C to +55°C, 30' MAX Distance with 12AWG (w/UNV Option Only)

## SPECIFICATION

### MOUNTING

- Mounts directly to standard outlet box. Additional mounting holes allow unit to be attached directly to mounting surface.
- Can be used as an up light.

### CONSTRUCTION

- Marine grade, corrosion resistant, heavy walled, high pressure die-cast aluminum. Die-cast back mounting plate.
- Impact resistant, clear, tempered glass. Precision formed semi-specular aluminum for maximum reflectance.
- Rubber silicone to seal contaminants. Captive stainless steel, tamper resistant hex socket screws.

### LED

- Lumens stated are the minimum delivered out of the luminaire. LED lifetime is greater than or equal to 70,000 hours with the lumen depreciation greater than L70. All of our luminaires are tested to LM 80 with an 80 CRI, color consistency of 4 SDCM. Integral power supply standard. Input voltage 120 VAC or 277 VAC. Consult factory for dimming and any single color options. FCW1035 delivers the same lumens each direction, up and down.

### FINISH

- Six stage chemical iron phosphate conversion pre-treatment. Polyester powder coat finish, 18 µm Min., 5,000 hour salt spray test (ASTM B117) compliant with Florida / AAMA 2604 specification.

### LISTING

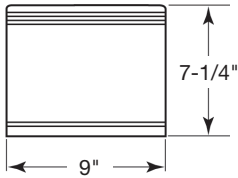
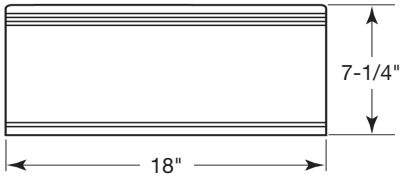
- UL & cUL/ETL, U.S. and CA listed for wet locations. IP65 rating.



# Dimensions

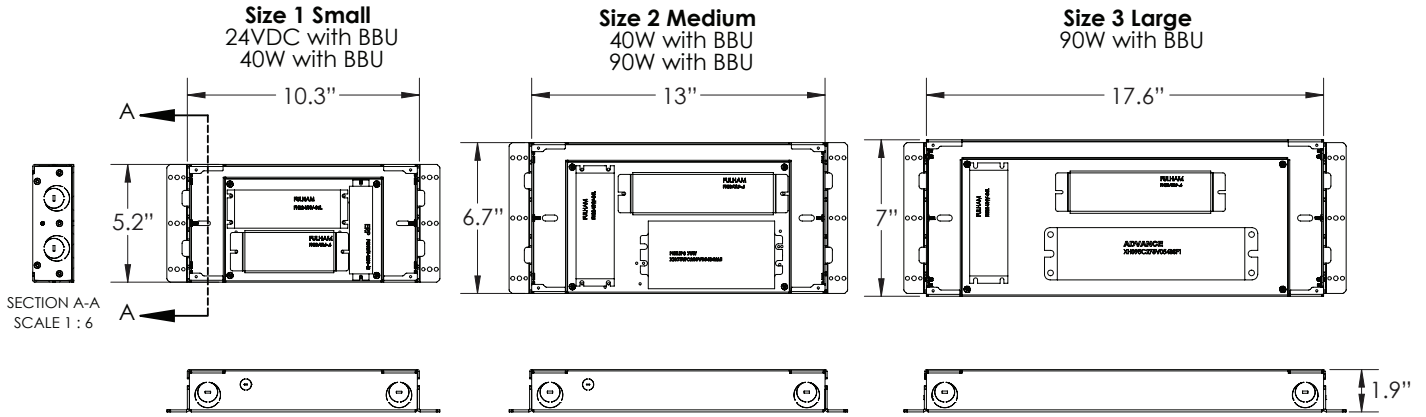
---

## FCW1035



**BATTERY BACK-UPS**

**BBUR - BATTERY BACK-UP & LED DRIVER REMOTE (INDOOR), IP20, IK08, NEMA 1, 0°C to +48°C, 30' MAX Distance with 12AWG (w/UNV Option Only)**



**BBUX - BATTERY BACK-UP & LED DRIVER REMOTE (OUTDOOR), IP67, IK10, NEMA 4X, -20°C to +55°C, 30' MAX Distance with 12AWG (w/UNV Option Only)**

